

Easy Setting Box

User Manual

Easy Setting Box is a screen splitting application for easily arranging windows by dividing monitor screens into multiple grids.



Table of Contents

About Easy Setting Box

- 03 What is Easy Setting Box ?
- 03 Key Features of Easy Setting Box
- 04 User Requirements

Easy Setting Box Install/ Uninstall

- 05 Easy Setting Box Install
- 08 Easy Setting Box Uninstall

Easy Setting Box Start

- 10 Easy Setting Box Execute
- 13 Easy Setting Box | Exit

Split Screen Layout

- 14 Splitting the Screen
- 15 Split Screen Layout Overview

Window Layout on Split Screen

Sending Window to Split Screen

Adjusting Split Screen Grid

Initializing Split Screen Grid

1

About Easy Setting Box

1-1 What is Easy Setting Box ?

Easy Setting Box is a screen splitting application for easily arranging windows by dividing monitor screens into multiple grids. The application comes in handy especially when using multiple monitors, helping you easily and quickly organize and arrange several windows.

1-2 Key Features of Easy Setting Box

Monitor screens can be split into 2 - 6 grids vertically or horizontally. Drag the window to the split screen you desire and it will be automatically arranged in the split screen grid.

You can also move the window from its title bar directly to the split screen you desire without even dragging it.

1-3 User Requirements

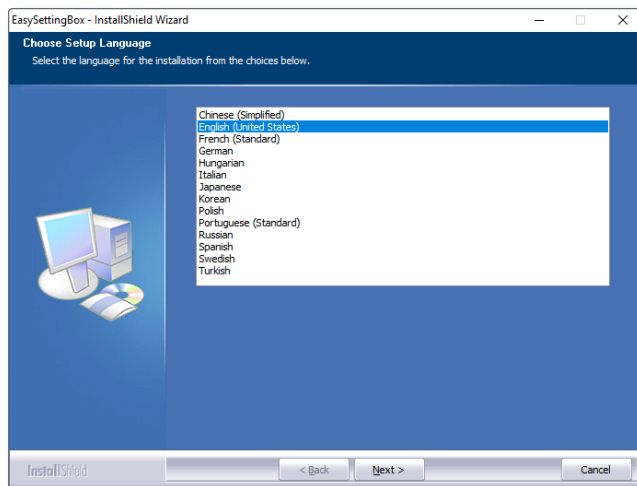
- Limitations
This application program runs only in Samsung monitors and it is applied to other applications that support the Windows APIs.
- Operating system
This program supports **Windows 7, Windows 8, Windows 8.1, and Windows 10 (32/64 bit)**. This user manual is written for **Windows 10**.
- Supported languages
Deutsch, English, Español, Français, Italiano, Magyar, Polski, Português, Русский, Svenska, Türkçe, 日本語, 한국어, 简体中文
- Customer Service Center
Main number: 1588-3366
Homepage: <http://www.samsungsvc.co.kr>
- Supplier homepage
Homepage: <http://www.samsung.com/sec>

2

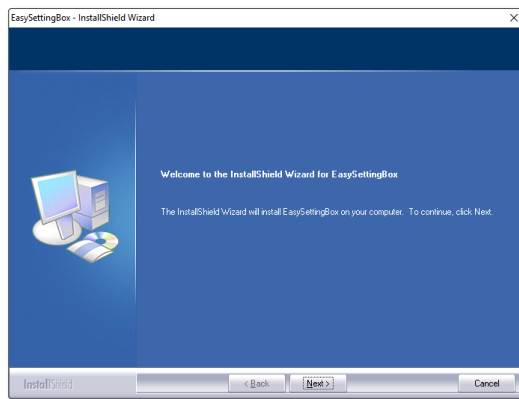
Easy Setting Box Install/Uninstall

2-1 Easy Setting Box Install

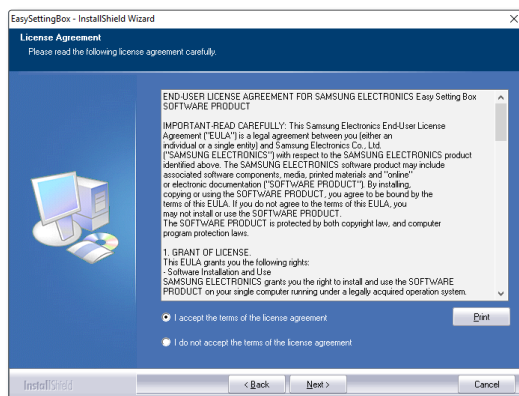
- 1 Double-click the **Easy Setting Box** installation file.
- 2 Specify the installation language and click **Next**.



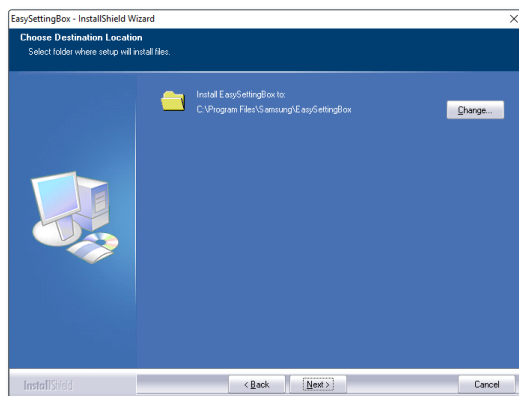
3 Click **Next** in the InstallShield Wizard window displayed.



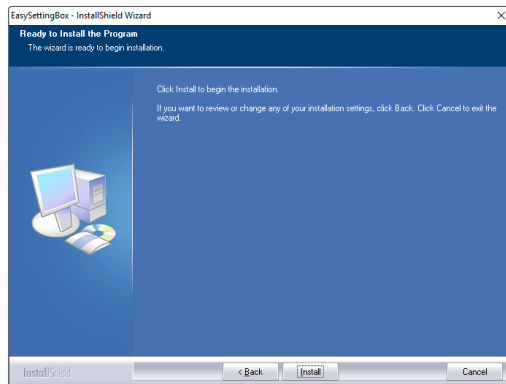
4 Select "**I accept the terms of the license agreement**" and click **Next**.



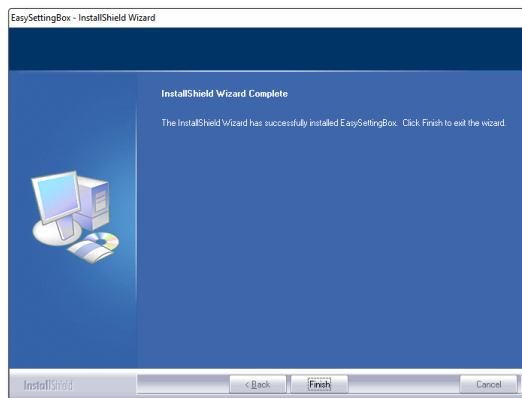
5 Specify the folder to install the program and click **Next**.



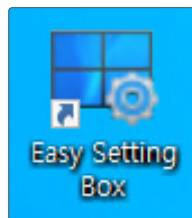
6 Click **Install**.



7 Click **Finish** to complete the installation.



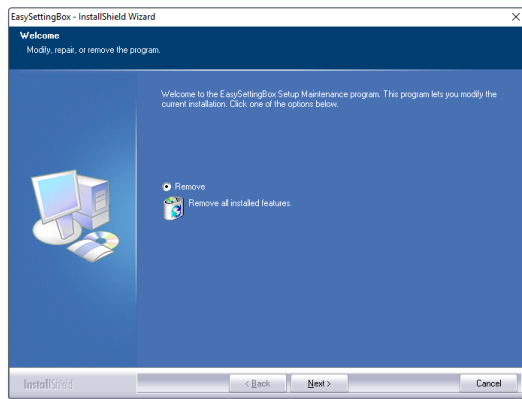
8 The executable **Easy Setting Box** icon is created on the desktop when installation is complete. To start the program, double-click the icon.



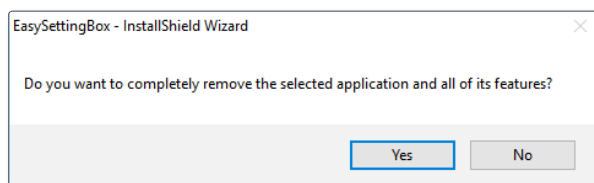
2-2 Easy Setting Box Uninstall

In an error occurs in the installed program, first exit the **Easy Setting Box** and proceed with the following steps to uninstall the program.

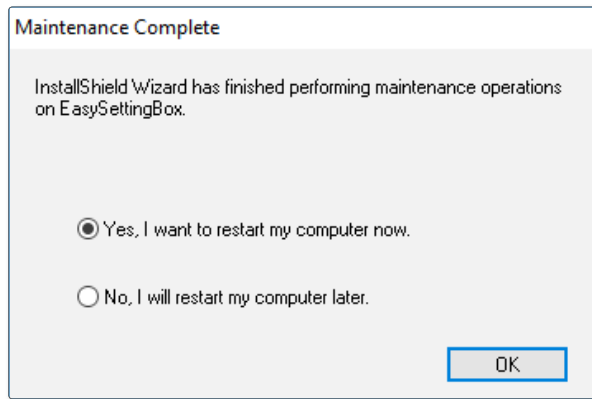
- 1 Go to **Start** → **Settings** → **App** and to **App and Features** to find **Easy Setting Box**.
- 2 Click **Easy Setting Box**, and then, **Uninstall** to bring up the screen for uninstallation. Click **Next** on this screen.



- 3 You are prompted to confirm if you want to remove the program completely. Click **Yes** to start program uninstall.



- 4 A message appears asking if you want to restart the PC. Make sure you restart the PC to ensure all settings are correctly configured. Click **OK** to restart the system.



3

Easy Setting Box Start

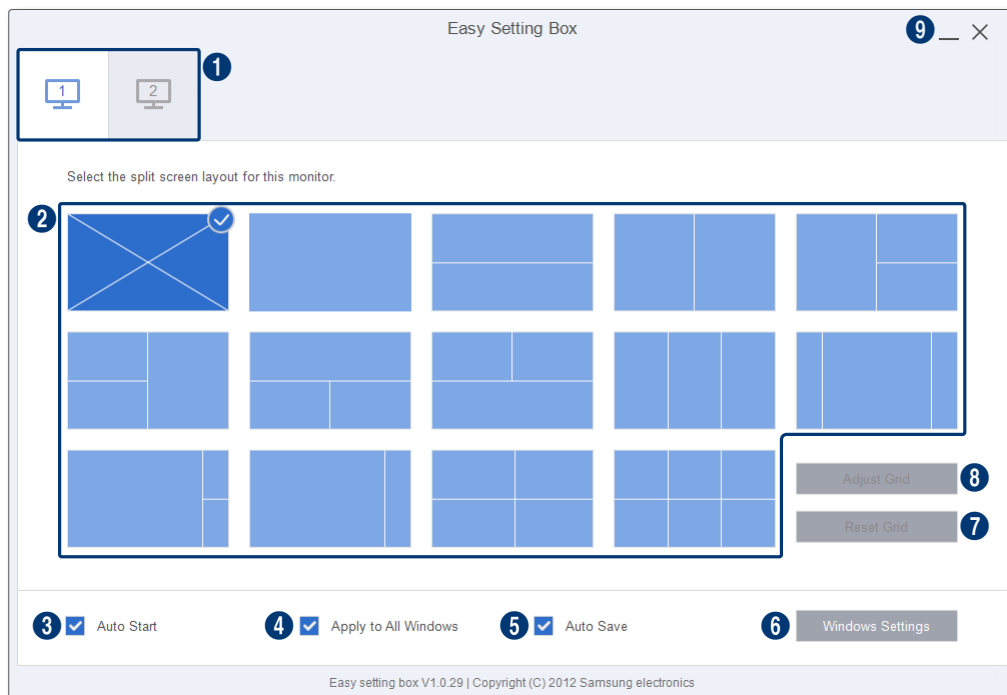
3-1 Easy Setting Box Execute

Double-click **Easy Setting Box** from the background screen or click the **Start** button, and then select **Easy Setting Box** from the installed Apps list.

When **Easy Setting Box** is executed it automatically recognizes the current monitor and designates the number corresponding to each monitor.

Easy Setting Box Look Around

Run **Easy Setting Box** and the following screen will be displayed.



-
- ① Tabs are displayed according to the number of monitors currently in use. Supports up to 4 monitors .

 - ② The split screen layout currently in use is shown as ticked. Click to select the desired split screen layout configuration.

 - ③ Tick here to allow the program to start automatically upon starting the **Windows** operating system.

 - ④ Tick here to toggle the split screen function on/off. You can move the window directly to the split screen you desire even when the split screen function is disabled. For more details, refer to the following. [▶ Sending Window to Split Screen](#)

 - ⑤ Tick here to automatically save the selected split screen layout.

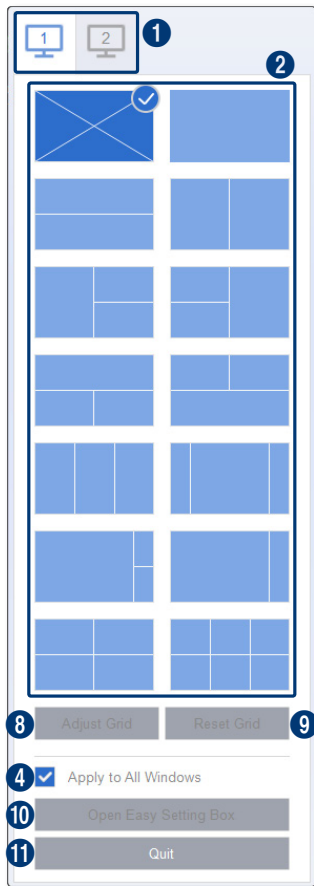
 - ⑥ This button brings up the Display Setting dialog box of the **Windows** control panel. Set the main monitor and change the resolution of the monitor. Terms and functions may vary depending on the version of the **Windows** operating system on your computer.

 - ⑦ The split screen grids can be initialized to the default size. For more details, refer to the following. [▶ Initializing Split Screen Grid](#)

 - ⑧ The split screen grids can be adjusted. For more details, refer to the following. [▶ Adjusting Split Screen Grid](#)

 - ⑨ Click the **Minimize** button to minimize the **Easy Setting Box** window. Click the **Close** button to minimize it to the system tray area.
-

In the System Tray area, right-click the **Easy Setting Box** icon and the screen below will be displayed.



10 Bring up the **Easy Setting Box** on the background screen.

11 Exit **Easy Setting Box**.

3-2 Easy Setting Box | Exit

To exit **Easy Setting Box** follow the steps below.

- 1 In the System Tray area, right-click the **Easy Setting Box** icon.
- 2 Click **Quit**.

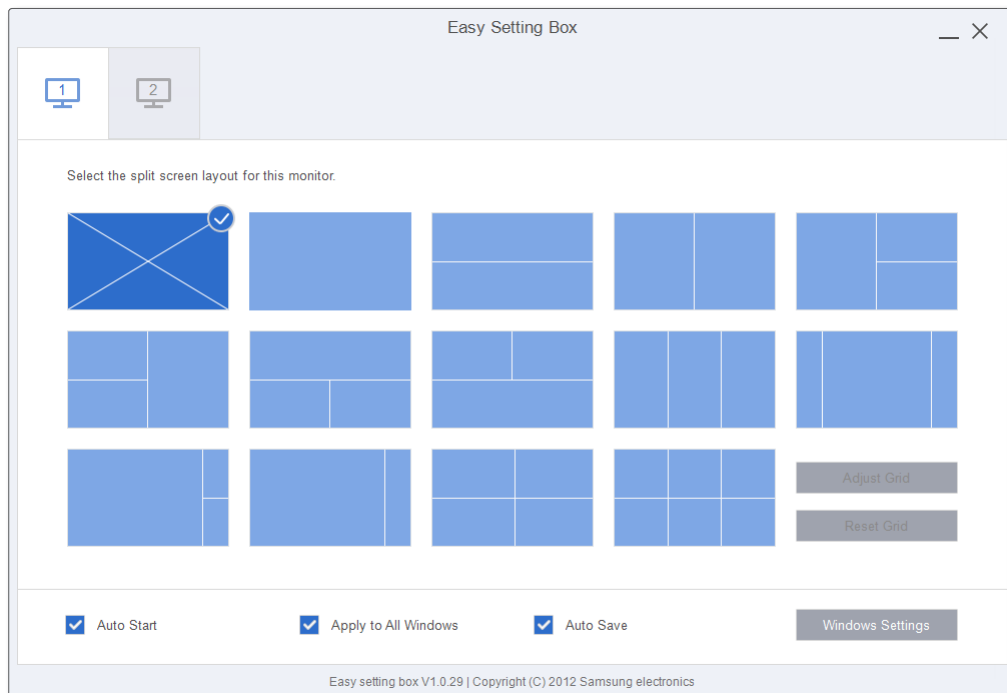
4

Split Screen Layout

4-1 Splitting the Screen

See below to split the screen.

- 1 Open **Easy Setting Box**.
- 2 Click the monitor of which screen to split from the upper tab.
- 3 Click the split screen layout you desire. A red division line will appear briefly on the screen and then disappear depending on the selected split screen layout. A tick mark appears on the upper-right edge of the selected split screen layout.



4-2 Split Screen Layout Overview

Monitor screens can be split into 2 - 6 grids vertically or horizontally.



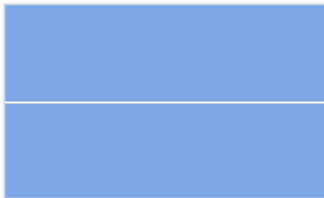
Screen split function disabled.

The screen will not be split.



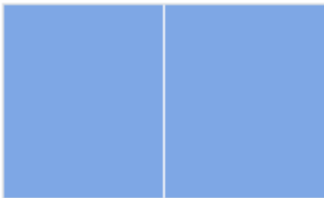
Single

The edges of the entire desktop illuminate in this split screen layout.



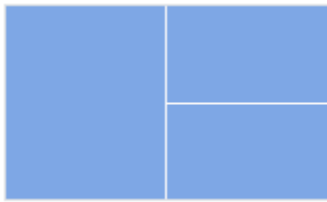
Horizontal Split 2

Displays a grid horizontally dividing the desktop into two halves. This layout allows you to arrange 2 equal sized windows side by side vertically.



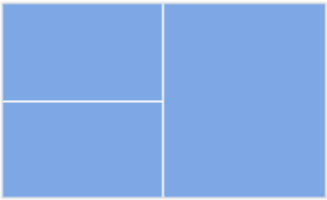
Vertical Split 2

Displays a grid vertically dividing the desktop into two halves. This layout allows you to arrange 2 equal sized windows side by side horizontally.



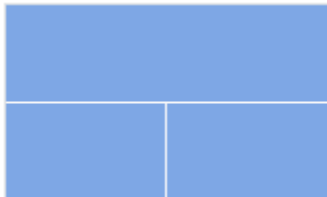
Split 3 (Main at Left)

Displays a grid dividing the desktop into 3 screens with the larger screen on the left and the other 2 smaller screens (equal size) side by side horizontally.



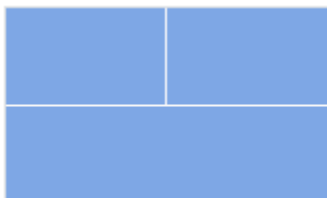
Split 3 (Main at Right)

Displays a grid dividing the desktop into 3 screens with the larger screen on the right and the other 2 smaller screens (equal size) side by side vertically.



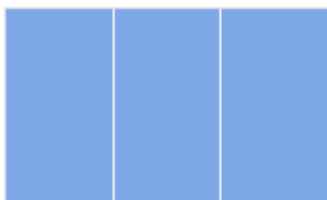
Split 3 (Main at Top)

Displays a grid dividing the desktop into 3 screens with the larger screen at the top and the other 2 smaller screens (equal size) side by side vertically.



Split 3 (Main at Bottom)

Displays a grid dividing the desktop into 3 screens with the larger screen at the bottom and the other 2 smaller screens (equal size) side by side vertically.



Vertical Equal Split 3

Displays a grid vertically dividing the desktop into 3 screens of equal size allowing you to assign a different window for each screen.



Triple Vertical Unequal (Main at center)

Three grids are displayed on the desktop at a ratio of 2.5:16:2.5. The main grid of the desktop occupies the largest area. The main grid is in the center and the other two are split equally on the sides.



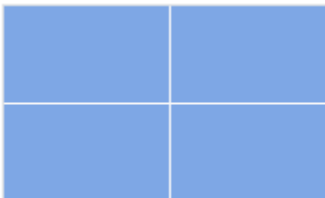
Unequal Split 3 (Main at Left)

Three grids are displayed on the desktop at a ratio of 16:5. The main grid of the desktop occupies the largest area. The main grid is on the left and the other two are split equally on the right horizontally.



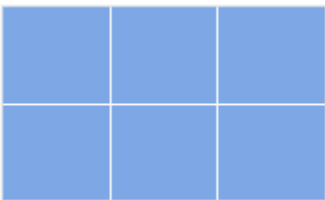
Unequal Split 2 (Main at Left)

Two grids are displayed on the desktop at a ratio of 16:5. The main grid of the desktop occupies the largest area. The main grid is on the left and the other is on the right.



Equal Split 4

Displays a grid vertically dividing the desktop into 4 screens of equal size allowing you to assign a different window for each screen.



Equal Split 6

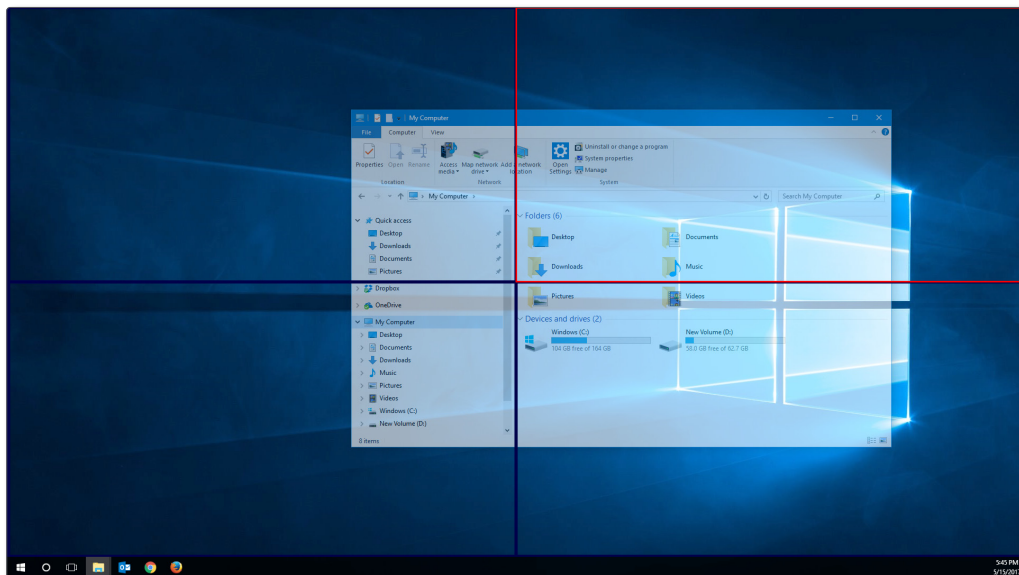
Displays a grid vertically dividing the desktop into 6 screens of equal size allowing you to assign a different window for each screen.

5

Window Layout on Split Screen

Split the screen and then assign the window you desire to place the split screen.

- 1 Click and hold the title bar of the window and drag it to the split screen to assign. The division line of the grid to assign will be shown in red.



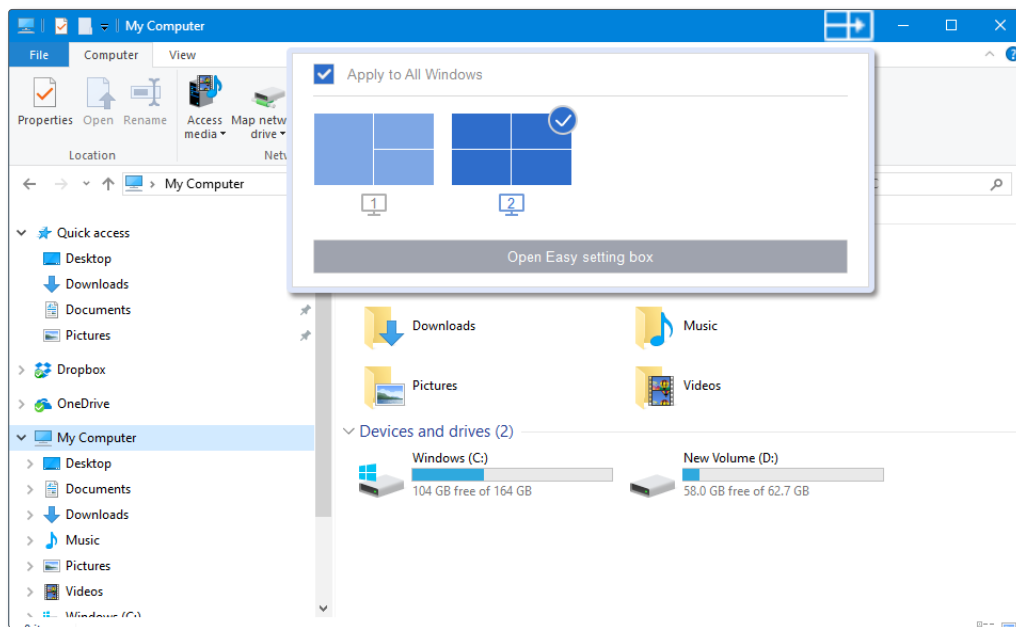
- 2 Release the mouse button and the window will be placed in the split screen grid accordingly.

6

Sending Window to Split Screen

You can move the window directly to the split screen you desire.

- 1 Click the **Easy Setting Box** icon in the window's title bar. This will display the current monitor and the split screen layout set in each monitor.



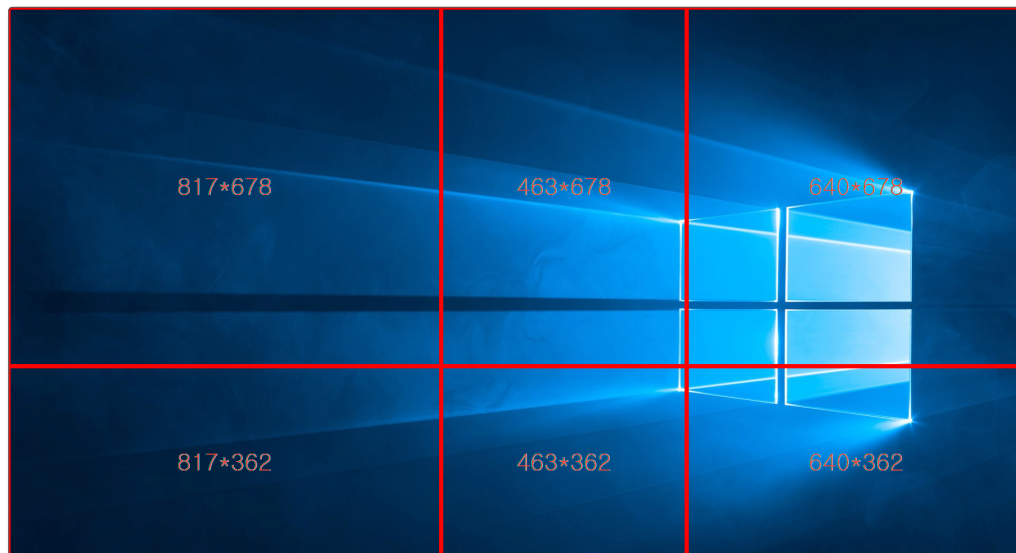
- 2 Click the grid you desire to move to and the window will be taken to the selected grid.

7

Adjusting Split Screen Grid

The split screen grids can be adjusted with a mouse. See the procedure below to adjust the split screen grids.

- 1 Open **Easy Setting Box**.
- 2 Select the monitor to adjust the split screen grid from the upper tab.
- 3 Click **Adjust Grid**. A red division line will be shown on the monitor screen.
- 4 Place the mouse pointer on the division line of the split screen you desire to adjust.
- 5 Click and hold the left mouse button and drag the division line to the position you desire. Specific resolution of the split screen will be displayed by the position of adjusting division line.



- 6 Stop the mouse pointer and release the left-mouse button to adjust the split screen grid.

8

Initializing Split Screen Grid

The split screen grids can be initialized to the default size.

- 1 Open the **Easy Setting Box** window.
- 2 Select the monitor to initialize the split screen grid to the default size from the upper tab.
- 3 Click **Reset Grid**.

