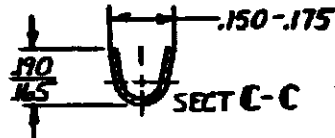
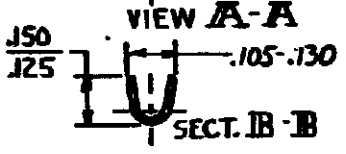
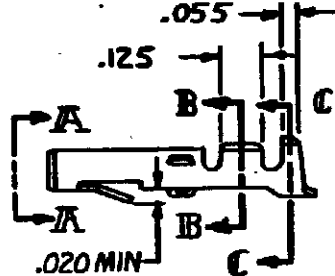
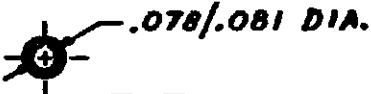
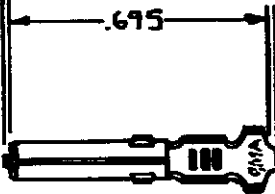


© COPYRIGHT 1964 BY AMP INCORPORATED, HARRISBURG, PA. ALL INTERNATIONAL RIGHTS RESERVED. AMP INCORPORATED PRODUCTS COVERED BY U.S. AND FOREIGN PATENTS AND/OR PATENTS PENDING.

REVISIONS

LTR	DESCRIPTION	DATE	APPROVED
N	REMOVED FROM 60615 PER M-5605	1-2-80	MSF/SH.
P	REV. FINISH ON-5 M-6033	10-1-80	MSF/SH.
R	REV. FINISH ON-7 M-6255	1-28-81	MSF/SH.
S	REV PER ECN AG-25	10-11-83	EB
S1	RESTORED	10/10/85	BO/RS
T	OBS. -2, -3 & -6 PER CM-862	9-3-87	PC TB

.008 MAX CUT-OFF TAB FOR -6 ONLY



▲ NICKEL ON ENTIRE TERMINAL WITH .000030 GOLD OVER INSIDE OF MATING AREA AND WIRE BARREL.

GOLD	▲ .012 PH. BRZ.	60619-7
GOLD	▲ .012 BRASS	-5
TIN	.012 PH. BRZ	-4
TIN	.012 BRASS	60619-1
FINISH	MATERIAL	PART NO

UNLESS OTHERWISE SPECIFIED DIMENSIONS ARE IN INCHES. TOLERANCES ON: DECIMALS ±.015 ANGLES ±

MATERIAL
SEE TABLE

FINISH
SEE TABLE

CONTRACT NO

DR M. FEHER 11-17-79

CHK D. S. Heide 1/4/80

APPRO D. S. Heide 1-7-80

WIRE RANGE
20-14 AWG

INSULATION DIA
.130 MAX

AMP INCORPORATED
Harrisburg, Pa.

NAME
SOCKET, LOOSE PIECE, COMMERCIAL MATE-N-LOK

SIZE A	CODE IDENT. NO 00779	DRAWING NO 60619
SCALE —	SHEET —	