

FEATURES

- Ultra-Light, sturdy, and super-portable for top-level performance.
- Maximum Durability thanks to specific anti-corrosion treatment, protective against the atmospheric agents
- Double stage for a very low effort on the lever and an increased efficiency
- Ultra-slim, ultra-light with weight only 3.3kg
- Lever Operated d, for industrial and professional tools, single acting cylinders, 0.5L usable oil.
- Single acting cylinder compatibility
- Made in Italy

RS PRO Portable Hydraulic Hand Pump

RS Stock No.: 309330



RS Professionally Approved Products bring to you professional quality parts across all product categories. Our product range has been tested by engineers and provides a comparable quality to the leading brands without paying a premium price.

Product Description

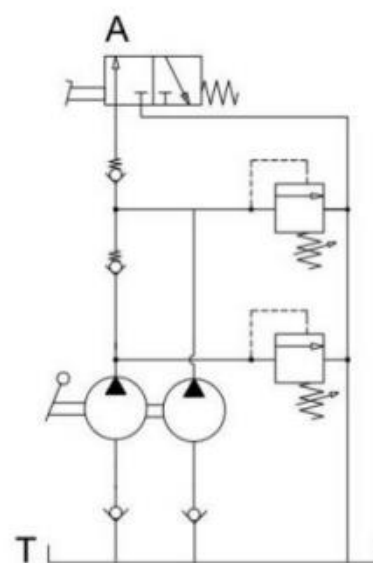
RS PRO Ultra-Slim Hydraulic Hand Pump double speed, lever operated, for industrial and professional tools, single acting cylinders, 0.5L usable oil.

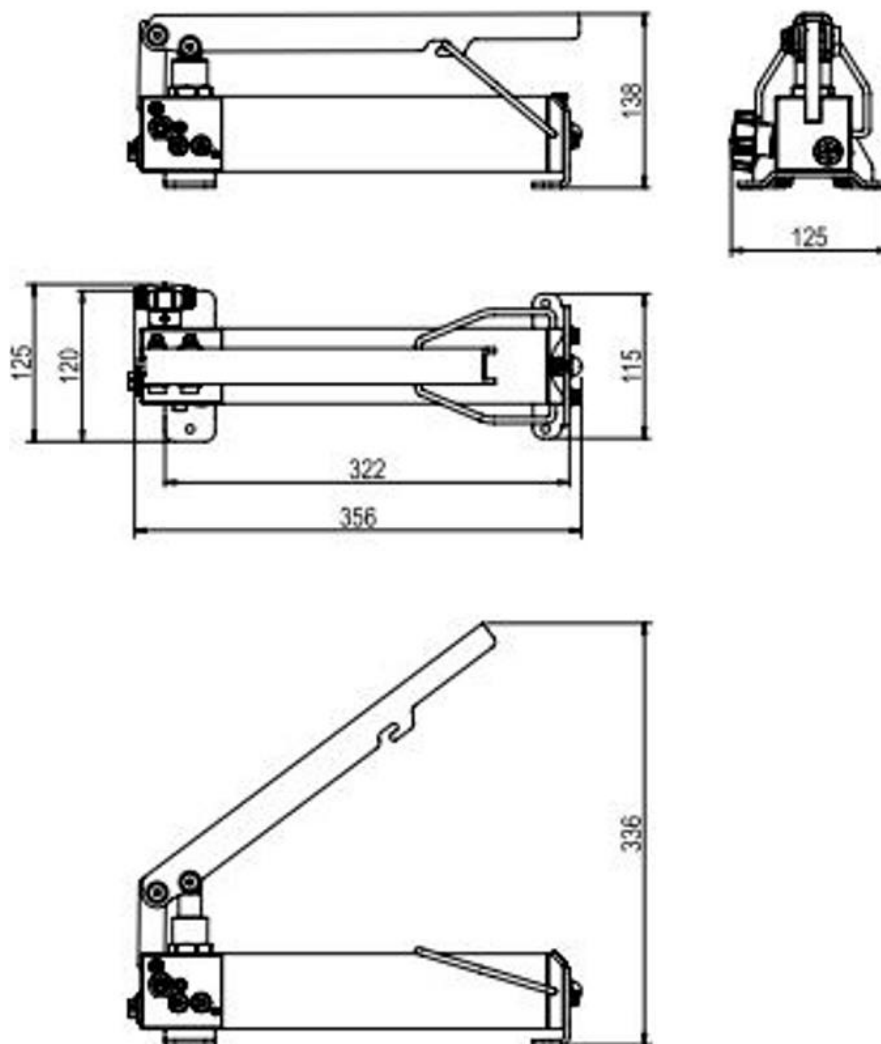
Applications: Industrial tools, lifting systems, garages, hobby, emergency, clamping systems, small hydraulic equipment, crimper, hydraulic cutters, ultra-portable applications.

- Operated through lever.
- Ultra compact size and lightweight for maximum portability
- Double stage for a very low effort on the lever and an increased efficiency
- Significant reduction of fatigue during operations
- Steel construction for maximum strength and durability
- Single acting cylinder compatibility
- Compact and sturdy construction for heavy duty
- Ready to use: no pneumatic network required nor compressors or any other devices for operation.
- Easy to handle and transport.
- Max working pressure up to 700bar
- Very lightweight and overall dimensions
- Made in Italy

Specifications

Maximum Operating Pressure	700 bar
Single/Two Speed	Double
Usable Oil Capacity	5l
Oil Port	3/8" NPT
Cylinder Stroke	18.4 mm
Displacement per Stroke 1st Stage	4.7 cm ³
Displacement per Stroke 2nd Stage	0.95 cm ³
Max Force	30 kg
Dimensions	356 x 125 x 138 mm
Weight	3.3 kg
Height	138 mm
Width	125 mm
Length	356 mm
Dimensions (Packed product)	640 x 190 x 200 mm
Pressure Gauge Connection Port	G 1/4"



Drawings**Additional Information**

Please note this is individual pump, no accessories included.
Please review our RS PRO Hydraulic Hand Pump Guide to see whole Range & Accessories available.

Note: This product is also available as a kit completed with flex hose, pressure gauge and fittings
(please view our range guide to find a right product for you)