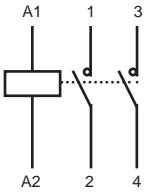
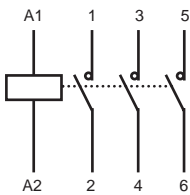




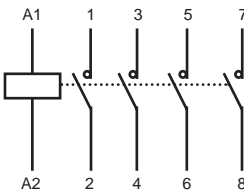
15959



2 pole normally open



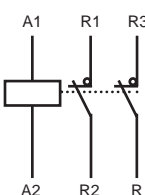
3 pole normally open



4 pole normally open



15975



2 pole normally closed

CT Contactor

For remote switching of power, heating, lighting and small utility motors.
See page 172 for applications.

Technical data

- **Operating temperature range:** -5°C to 60°C
- **Power circuits:** 250V (2 pole devices), 415V (3/4 pole devices).
- **Control circuit:** 230/240V ac: -15%, +6%, 24V ac: -10%, +10%.
- **Coil frequency:** 50 Hz.

Installation in enclosures

When installing several CT contactors side by side, include a half module spacer, Part N°. **27062** between every unit.

- **Compliance with standards:** IEC 1095, BS EN 61095
- **Dimensions:** see page 138.
- **Connection:** by tunnel terminals:
 - Power circuit, multicore cable:
 - 2 x 2.5mm² for 16 and 25A.
 - 2 x 10mm² for 40A.
 - Power circuit, single core:
 - 6mm² up to 25A.
 - 25mm² for 40A.
 - Control circuit:
 - Multicore 2 x 2.5mm².
 - Single core 2 x 1.5mm².

240V ac control circuit

Contact position	N°. of poles	Contact rating		Width in 18mm SP ways	Part N°.	
		A	V (ac)			
Normally open	2	25	250	1	15959	
	2	40	250	2	15966	
	2	63	250	2	15971	
	2	100	250	3	15977	
	3	25	415	2	15961	
	3	40	415	3	15967	
	3	63	415	3	15972	
	4	25	415	2	15962	
	4	40	415	3	15968	
	4	63	415	3	15973	
	4	100	415	6	15978	
	Normally closed	2	25	250	1	15960
		4	25	415	2	15963
		4	40	415	3	15969
4		63	415	3	15974	
1N.O. + 1N.C.	2	16	250	1	15956	
2N.O. + 2N.C.	4	25	415	2	15964	
2N.O. + 2N.C.	4	63	415	3	15975	

24V ac control circuit

Contact position	N°. of poles	Contact rating		Width in 18mm SP ways	Part N°.
		A	V (ac)		
Normally open	2	25	250	1	16020
	2	63	250	2	16024
	4	25	415	2	16022
	4	63	415	3	16025
Normally closed	4	25	415	2	16023
	4	63	415	3	16026

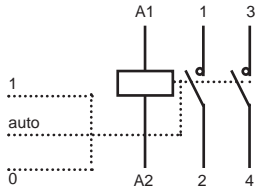
CT 2000 contactors

With manual control

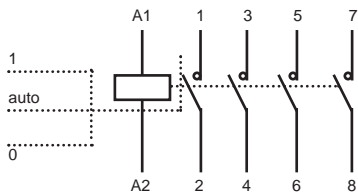


15981

15988



2 pole **15981**



4 pole **15988**

CT Contactor

For remote switching of power, heating, lighting circuits and small utility motors, with manual override function. See page 172 for application details.

Technical data

- **Operating temperature range:** -5 °C to 60 °C.
- **Power circuits:** 250V (2 pole devices).
415V (3/4 pole devices).
- **Control circuit:** 230/240V ac: -15%, +6%.
- **Coil frequency:** 50 Hz.

Installation in enclosures

When installing several CT contactors side by side, include a half module spacer, Part N° **27062** between every unit.

- **Compliance with standards:** IEC 1095, BS EN 61095.

- **Dimensions:** see page 138.

- **Connection:** by tunnel terminals:
Power circuit, multicore cable:

- 2 x 2.5mm² for 16 and 25A.
- 2 x 10mm² for 40 and 63A.

Power circuit, single core:

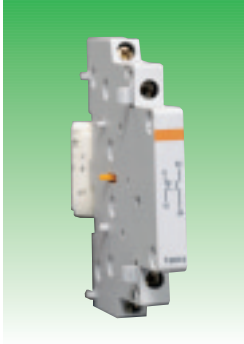
- 6mm² up to 25A.
- 25mm² for 40 and 63A.

Control circuit:

- Multicore 2 x 2.5mm².
- Single core 2 x 1.5mm².

240V ac control circuit

Contact position	N°. of poles	Contact rating		Width in 18mm SP ways	Part N°.
		A	V (ac)		
Normally open	2	25	250	1	15981
	2	40	250	2	15984
	2	63	250	2	15987
	4	25	415	2	15983
	4	40	415	3	15986
	4	63	415	3	15988



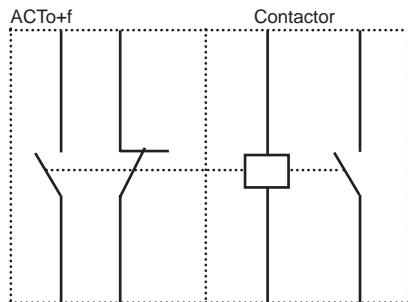
15914

ACTo + f contactor auxiliary

Provides remote indication of the status of a contactor clips onto the right hand side of any 2, 3 or 4 pole device. Contains one normally open and one normally closed contact.

- **Operating voltage:** 24 - 240V AC/DC.
- **Maximum contact rating:** 2A at 240V ac/dc, $\text{Cos}\phi = 1$.
- **Cable capacity:** 2 x 2.5mm² cable.

Width in 18mm SP ways	Description	Contact rating (AC1)	(Vac)	Control volt Vac	Part N°.
0.5	ACTo+f aux. contact	2A	24-240	-	15914



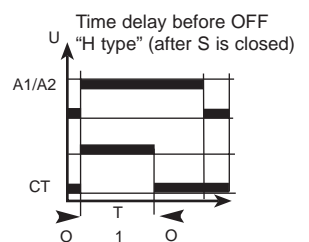
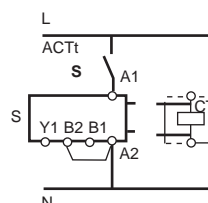
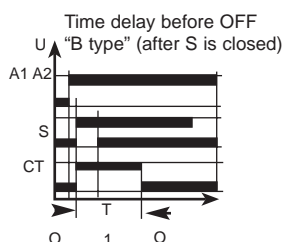
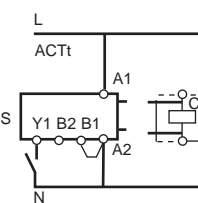
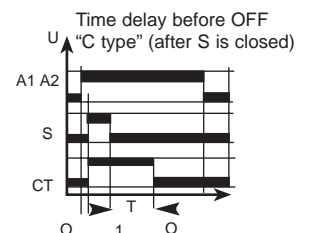
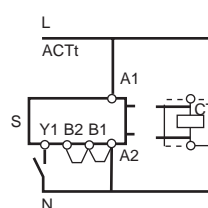
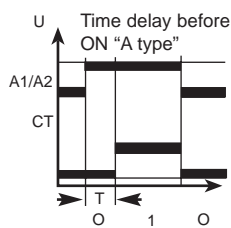
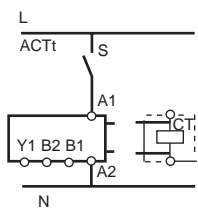
15917

ACTt auxiliary

Can be used to delay the energisation or de-energisation of a contactor, the timing function is dependent upon the external link method selected.

- **Time delay options:** 4 types (A, B, C or H type), adjustable between 1s and 10hrs.
- **Operating voltage:** 24-240V AC 50Hz.
- **Consumption:** 5VA.
- **Cable capacity:** 1.5mm² cable.

Width in 18mm mods.	Description	Contact rating (AC1)	(Vac)	Control volt Vac	Part N°.
1	ACTt time delay unit	-	-	24-240 dc/ac	15917



CT2000 contactors

Auxiliaries



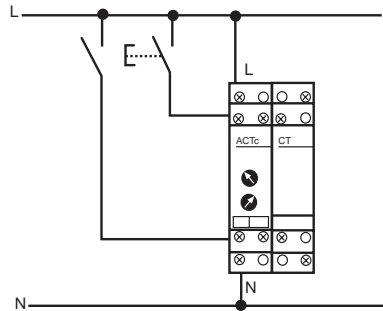
15920

Application for ACTp auxiliary

The ACTp filter (suppressor), prevents overvoltage in the control circuit when the contactor coil is de-energised. Typical applications include the control of a contactor coil with a PLC, Thyristor or other sensitive electronic device.

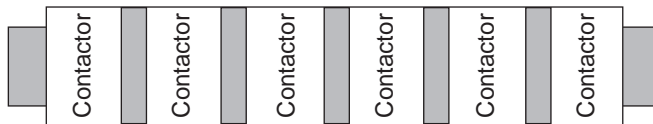
- **Consumption:** 3VA.
- **Cable capacity:** 4mm² cable.

Width in 18mm SP ways	Description	Control volt Vac	Part N°.
1	ACTp filter 240V devices	240	15920
1	ACTp filter 24V devices	24	15919



27062

Width in 18mm SP ways	Description	Part N°.
	Terminal shield 2P 40/63A	15922
	Terminal shield 3/4P 25A	15921
	Terminal shield 3/4P 40/63A	15923
0.5	Contactur spacer	27062



Note: 1 spacer should be installed between every contactur where group mounting is employed.