

# Product datasheet

Specifications



## connection sub-base accessory - redundant output sub-base

Local distributor code:  
402702469 ABE7ACC10

EAN Code: 3389110864731

### Main

Accessory / separate part designation	Redundant output sub-base
Accessory / separate part destination	PLC
Accessory / separate part category	Connection accessories
Accessory / separate part type	Splitter sub-base
Range of product	Modicon ABE7
Sub-base type	Redundant output sub-base
Number of channels	16
Quantity per set	Set of 1

### Complementary

Channel splitting	2 x 16
Net weight	0.075 kg

### Packing Units

Unit Type of Package 1	PCE
Number of Units in Package 1	1
Package 1 Height	7.000 cm
Package 1 Width	3.000 cm
Package 1 Length	9.500 cm
Package 1 Weight	121.000 g
Unit Type of Package 2	S03
Number of Units in Package 2	24
Package 2 Height	30.000 cm
Package 2 Width	30.000 cm
Package 2 Length	40.000 cm
Package 2 Weight	3.452 kg

### Logistical informations

Country of origin	LV
-------------------	----

### Contractual warranty

Warranty	18 months
----------	-----------

Disclaimer: This documentation is not intended as a substitute for and is not to be used for determining suitability or reliability of these products for specific user applications

Schneider Electric aims to achieve Net Zero status by 2050 through supply chain partnerships, lower impact materials, and circularity via our ongoing “Use Better, Use Longer, Use Again” campaign to extend product lifetimes and recyclability.



[Environmental Data explained >](#)

[How we assess product sustainability >](#)

Use Better

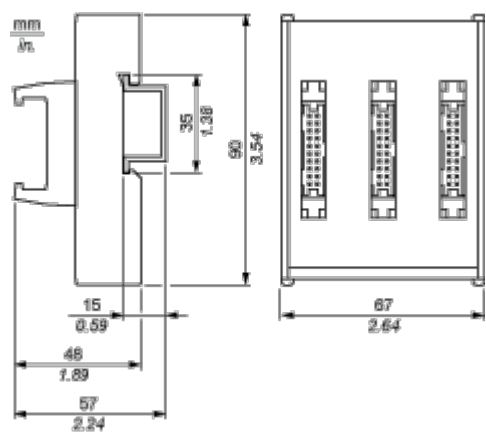
 Materials and Substances	
Packaging made with recycled cardboard	No
Packaging without single use plastic	No
<a href="#">EU RoHS Directive</a>	Pro-active compliance (Product out of EU RoHS legal scope)
REACH Regulation	<a href="#">REACH Declaration</a>

Use Again

 Repack and remanufacture	
Take-back	No
WEEE	 The product must be disposed on European Union markets following specific waste collection and never end up in rubbish bins

Dimensions Drawings

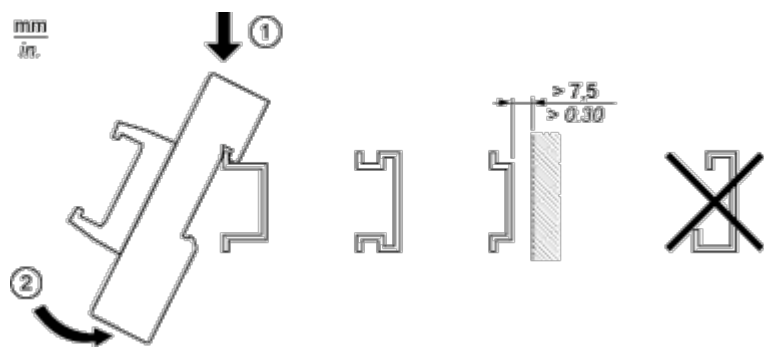
Dimensions



Mounting and Clearance

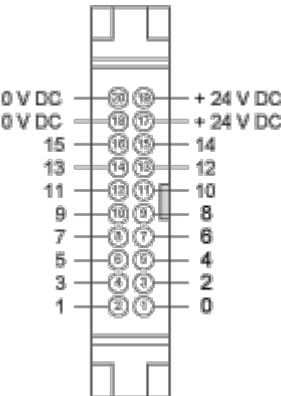
Mounting

---



Connections and Schema

HE10 16 Channels



Wiring Diagram

---

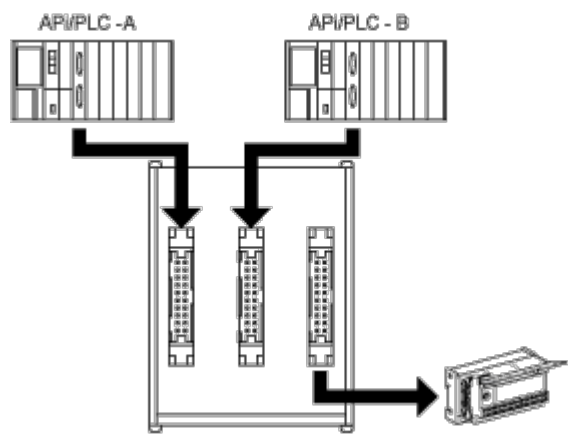


Image of product / Alternate images

Alternative

---

