



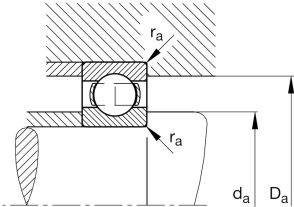
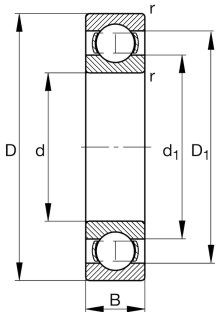
FAG

6319

Deep groove ball bearing

Deep groove ball bearing 63, single row, steel
sheet metal cage

Technical information



Your current product variant

Sealing	Without	Not sealed
Cage	JN	Steel sheet metal
Tolerance class	PN	Normal (PN)
Dimensional / heat stabilization	S0	Rings dimensional stabilized up to 150°
Lubricant	Without	Bearing not greased
Radial internal clearance	CN (Group N)	Normal internal clearance
Bore type	Z	Cylindrical

Main Dimensions & Performance Data

d	95 mm	Bore diameter
D	200 mm	Outside diameter
B	45 mm	Width
C _r	154,000 N	Basic dynamic load rating, radial
C _{0r}	113,000 N	Basic static load rating, radial
C _{ur}	6,600 N	Fatigue load limit, radial
n _G	4,600 1/min	Limiting speed
n _{gr}	4,950 1/min	Reference speed
≈m	6.23 kg	Weight



Mounting dimensions

$d_{a\min}$	109 mm	Minimum diameter shaft shoulder
$D_{a\max}$	186 mm	Maximum diameter of housing shoulder
$r_{a\max}$	2.5 mm	Maximum fillet radius

Dimensions

r_{\min}	3 mm	Minimum chamfer dimension
D_1	166.88 mm	Shoulder diameter outer ring
d_1	129.08 mm	Shoulder diameter inner ring

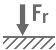





Temperature range

T_{\min}	-30 °C	Operating temperature min.
T_{\max}	150 °C	Operating temperature max.

Calculation factors

f_0	13.8	Calculation factor
-------	------	--------------------

Characteristics

-  Radial load
-  Axial load in one direction
-  Axial load in two directions
-  Grease Lubrication
-  Oil Lubrication
-  Not sealed