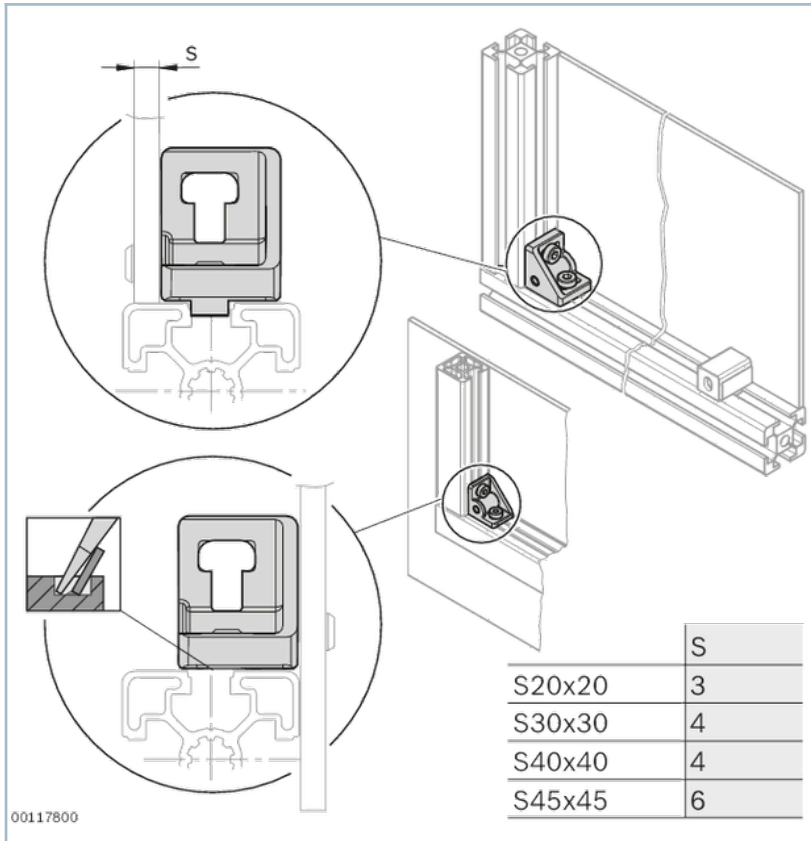


Bracket S



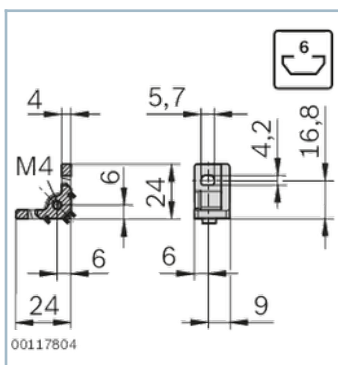
- Bracket with thread for virtually gap-free mounting of surface elements
- For subsequent installation in closed frame constructions
- The surface element can be mounted in different positions: flush with the profile edge or in front of the profile (by breaking off the centering lug)

Product description

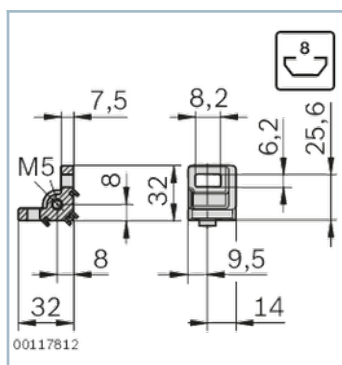


Dimensions

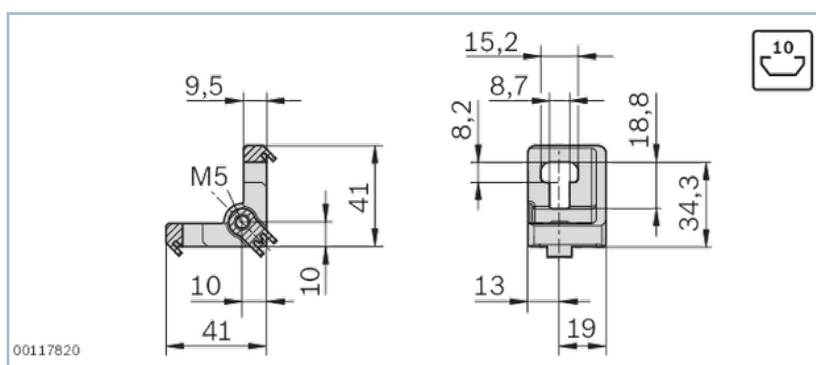
Bracket S 20x20, 20x20 set



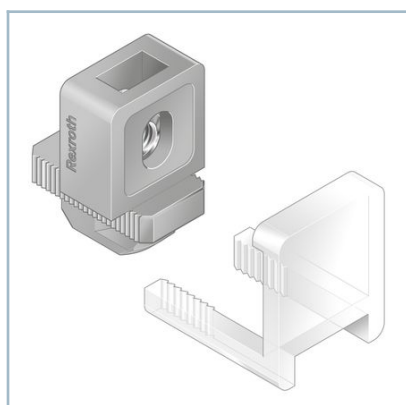
Bracket S 30x30 set 30x30



Bracket S 40/45, 40/45 set



Accessories



Variofix Block


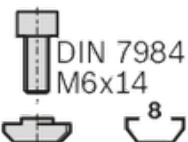
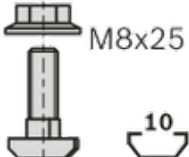
- For surface elements with a thickness of up to 13 mm
- For subsequent installation in closed frame constructions
- Asymmetrical form enables surface elements to be fastened in two different positions
- Clamping with snap-in clip or screw fitting with square nut M6 (included in scope of delivery) and
- Retainer ring for connecting the screw to the surface element (Machinery Directive 2006/42/EC)



Retainer ring

- Secures the fastening screw to the surface element
- For use with all Variofix blocks, but not for the S bracket
- Retrofitting possible
- For various thread sizes

Delivery notes

FS1	FS2	FS3
		

Ordering codes

	Groove	FS	No.
Bracket S 20x20	6		3842536489
Bracket S 20x20 set	6	2xFS1	3842536670
Bracket S 30x30	8		3842536490
Bracket S 30x30 set	8	2xFS2	3842536671
Bracket S 40/45	10		3842536491
Bracket S 40/45, set	10	2xFS3	3842536672