



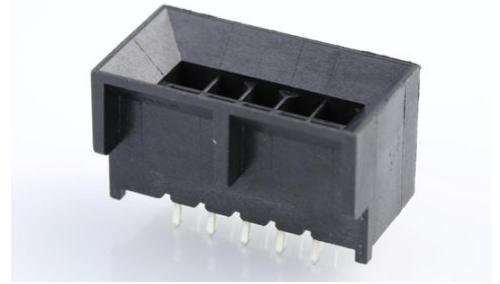
Part Number : [444321003](#)

Product Description : Micro-Fit BMI Header, Dual Row, Vertical, with PCB Polarizing Peg, 10 Circuits, 0.76µm Gold (Au) Selective Plating, Kinked Tails

Series Number : 44432

Status : Active

Product Category : PCB Headers and Receptacles



Documents & Resources

Drawings

[444321003 sd.pdf](#)

[PK-44432-001-001.pdf](#)

3D Models and Design Files

[STEP AP242](#)

[SOLIDWORKS](#)

[Creo](#)

[Symbol and Footprint \(Multi-Format\)](#)

[SYM-44432-1001-001.zip](#)

[SYM-44432-100X-001.zip](#)


Specifications

[PS-44300-001-001.pdf](#)

[443000002-TS-000.pdf](#)

Product Environment Compliance

Compliance

GADSL/IMDS	Compliant with Exemption 44; 34; 33
China RoHS	 per SJ/T 11365-2006
EU ELV	Not Relevant
Low-Halogen Status	Not Low-Halogen per IEC 61249-2-21
REACH SVHC	Not Contained per D(2024)7663-DC

	(21 Jan 2025)
EU RoHS	Compliant per EU 2015/863

Compliance Statements

- EU RoHS
- REACH SVHC
- Low-Halogen

Industry Documents

- IPC 1752A Class C
- IPC 1752A Class D
- Molex Product Compliance Declaration
- IEC-62474
- chemSHERPA (xml)

Substances of Interest

- PFAS

EU RoHS Certificate of Compliance

Additional Product Compliance Information

Part Details

General

Status	Active
Category	PCB Headers and Receptacles
Series	44432
Description	Micro-Fit BMI Header, Dual Row, Vertical, with PCB Polarizing Peg, 10 Circuits, 0.76µm Gold (Au) Selective Plating, Kinked Tails
Application	Board-to-Board, Power, Wire-to-Board
Comments	High Temperature, Square Pin, Solder Type
Component Type	PCB Header
Product Name	Micro-Fit BMI
UPC	800756378695

Agency

CSA	LR19980
UL	E29179

Electrical

Current - Maximum per Contact	8.5A
Voltage - Maximum	600V

Physical

Breakaway	No
Circuits (Loaded)	10
Circuits (maximum)	10
Color - Resin	Black
Durability (mating cycles max)	30
First Mate / Last Break	No
Flammability	94V-0
Glow-Wire Capable	No
Material - Metal	Brass
Material - Plating Mating	Gold
Material - Plating Termination	Tin
Material - Resin	Nylon
Net Weight	2.020/g
Number of Rows	2
Orientation	Vertical
Packaging Type	Tray
PCB Locator	Yes
PCB Retention	Yes
PCB Thickness - Recommended	1.60mm
PC Tail Length	3.30mm
Pitch - Mating Interface	3.00mm
Plating min - Mating	0.762µm
Plating min - Termination	2.540µm
Polarized to Mating Part	Yes
Polarized to PCB	Yes
Shrouded	Fully
Stackable	No
Temperature Range - Operating	-40° to +105°C
Termination Interface Style	Through Hole

Solder Process Data

Max-Duration	5
Lead-Free Process Capability	WAVE
Max-Cycle	1
Max-Temp	260

Mates With / Use With

Mates with Part(s)

Description	Part Number
Micro-Fit BMI Dual Row Receptacle Housings	<u>44133</u>
Micro-Fit BMI Right-Angle Dual Row PCB Receptacles	<u>44764</u>
Micro-Fit BMI Vertical Dual Row PCB Receptacles	<u>44769</u>