



FAG



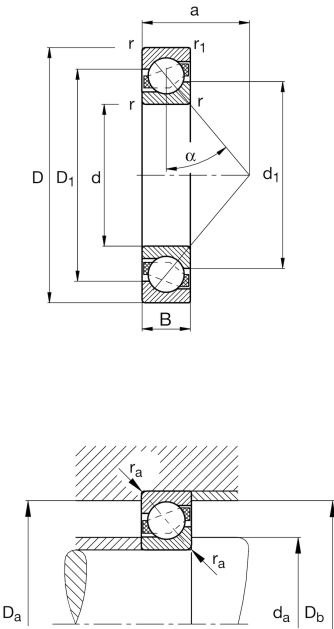
X-life

7230-B-XL-MP [🔗](#)

Angular contact ball bearing

Angular contact ball bearing 72..-B-XL-MP,
single row, X-life, solid brass cage

Technical information



Your current product variant

Design variant	B	B
Sealing	Without	Not sealed
Cage	MP	solid brass cage, ball guided
Tolerance class	PN	Normal (PN)
Dimensional / heat stabilization	S1	Rings dimensional stabilized up to 200°
Lubricant	Without	Bearing not greased

Main Dimensions & Performance Data

d	150 mm	Bore diameter
D	270 mm	Outside diameter
B	45 mm	Width
C _r	245,000 N	Basic dynamic load rating, radial
C _{0r}	275,000 N	Basic static load rating, radial
C _{ur}	13,200 N	Fatigue load limit, radial
n _G	4,100 1/min	Limiting speed
n _{gr}	2,850 1/min	Reference speed
m	10.995 kg	Weight



Mounting dimensions

$d_{a\ min}$	164 mm	Minimum diameter of shaft shoulder
$D_{a\ max}$	256 mm	Maximum diameter of housing shoulder
$D_{b\ max}$	263 mm	Maximum diameter of housing shoulder
$r_{a\ max}$	2.5 mm	Maximum fillet radius of shaft
$r_{a1\ max}$	1 mm	Maximum fillet radius of housing


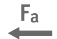



Dimensions

r_{\min}	3 mm	Minimum chamfer dimension
$r_{1\ min}$	1.1 mm	Minimum chamfer dimension
D_1	223.5 mm	Shoulder diameter on outer ring wide side face
d_1	197.5 mm	Shoulder diameter on inner ring wide side face
a	110.6 mm	Distance between the apexes of the pressure cones
α	40 °	Contact angle

Temperature range

T_{\min}	-30 °C	Operating temperature min.
T_{\max}	200 °C	Operating temperature max.

Characteristics

	Radial load
	Axial load in one direction
	Grease Lubrication
	Oil Lubrication
	Not sealed