

Features

- DisplayPort to DVI-D
- Male to Male
- 20 Pin connector
- Gold plated contacts
- PVC sheath
- Strain relief

RS PRO 1080P DVI-D DisplayPort Cable

RS Stock No.: 182-8784



RS PRO is the own brand of RS. The RS PRO Seal of Approval is your assurance of professional quality, a guarantee that every part is rigorously tested, inspected, and audited against demanding standards. Making RS PRO the Smart Choice for our customers.

Product Description

A flexible male DisplayPort to DVI-D cable providing high quality signal transmission and 1080p resolution enabling the straightforward set up and connection of direct video equipment.

Fitted with a 20 pin male DisplayPort and a DVI-D connection with a corrosion and wear resistant Gold plating on either end. The contacts are surrounded with an impact resistant ABS shell, flexible PVC sheath and strain relief protecting from external damage and internal breaks.

General Specifications

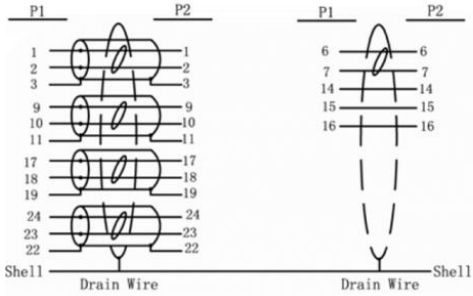
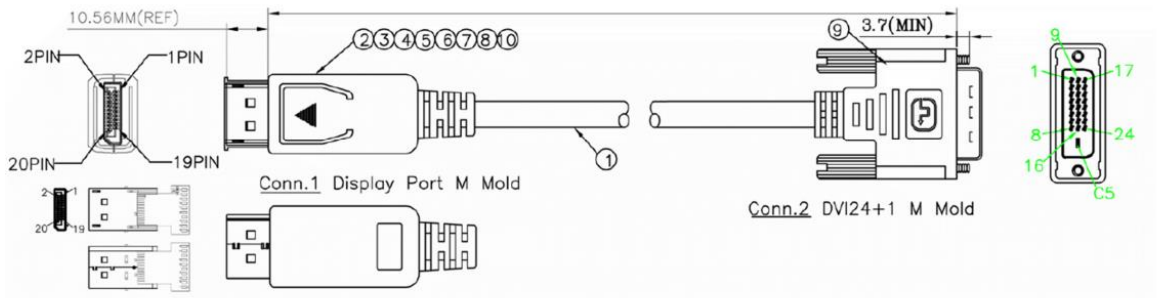
Connector 1	Male DisplayPort
Connector 2	Male DVI-D
Contact Plating	Gold
Maximum Resolution	1080p
Outer Sheath Material	PVC
Sheath Colour	Black

Mechanical Specifications

Length	1m
Size of Strands	30 AWG

Approvals

Compliance/Certifications	CE, REACH, RoHS
---------------------------	-----------------



10	DisplayPort M DUST CAP
9	DVI M DUST CAP
8	DisplayPort M ABS UP SHELL BLACK
7	DisplayPort M ABS TOP SHELL BLACK
6	φ 1.0 H.S.T L=10MM*4PCS
5	φ 2.0 H.S.T L=8MM*4PCS
4	φ 1.5 H.S.T L=16MM
3	45P BLACK PVC
2	DP (SHELL GOLD PLATED) to HDMI/DVI PCB+SMT+SOLDER
1	DVI (24+1) M TO DVI (24+1) M 30AWG 4M BLACK GOLD PLATED