

## CARACTERÍSTICAS

- Contactos fabricados de aleaciones de termopar reales
- Código de colores para una identificación rápida y sencilla
- Acepta contactos macho redondos polarizados para una conexión precisa
- Fabricada en termoplástico reforzado con fibra de vidrio
- Capaz de resistir temperaturas de hasta 120 °C.
- Para usar con cables sólidos o multifilares
- Acepta cable de termopar de hasta

## Conector de termopar IEC RS Pro para usar con termopar tipo K, estándar

RS Código RS: 455-9758



Los productos con aprobación profesional RS le proporcionan piezas de calidad profesional en todas las categorías de productos. Nuestra gama de productos ha sido probada por ingenieros y proporciona una calidad comparable a las marcas líderes sin pagar un precio superior.

## Descripción del

RS Pro presenta un conector hembra de termopar de montaje en panel de tamaño estándar con código de colores conforme a la especificación IEC. Este conector hembra de termopar es ideal para conectar su sonda de termopar o terminales de cable a cables de extensión o compensación. Este conector hembra también proporciona una manera rápida, segura y sin errores de reemplazar los termopares existentes. La carcasa del conector hembra está fabricada de un termoplástico reforzado con fibra de vidrio resistente a impactos y capaz de resistir altas temperaturas de hasta 220 °C. Los terminales de este conector hembra aceptan contactos de contacto plano polarizados para garantizar una conexión precisa. La carcasa está codificada por colores IEC con el tipo de termopar claramente indicado en la parte frontal para facilitar la identificación.

## Especificaciones generales

<b>Tipo de accesorio</b>	Conector de termopar
<b>Para usar con</b>	Termopar tipo K
<b>Tipo de termopar</b>	K
<b>Temperatura máxima</b>	220 °C.
<b>Contacto positivo (tipo aleación)</b>	Cromo níquel
<b>Contacto negativo (tipo aleación)</b>	Aleación de níquel
<b>Tipo de abrazadera</b>	Miniatura
<b>Color</b>	Verde
<b>Aplicaciones</b>	Conector en línea en miniatura

## Especificaciones mecánicas

<b>Tipo de conector</b>	Conector de termopar
<b>Diámetro de bolsillo</b>	4 mm
<b>Diámetro del cable del termopar</b>	4 mm

## Especificaciones del entorno de funcionamiento

<b>Temperatura máxima de funcionamiento continuo</b>	220 °C.
--	---------

## Aprobaciones

Cumplimiento/Certificaciones	IEC, RoHS
------------------------------	-----------

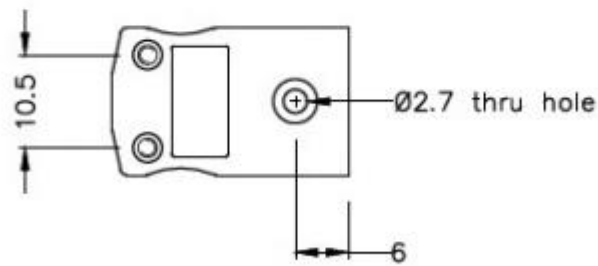
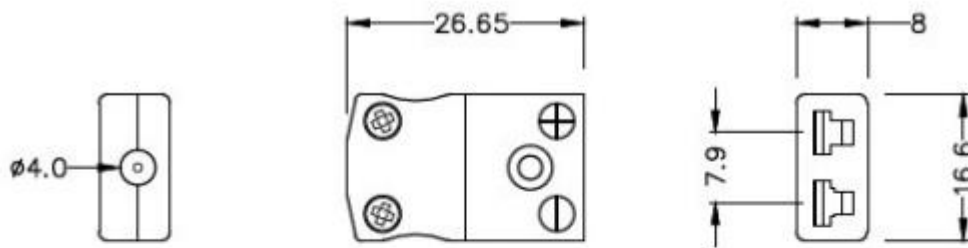


T/C Type	Colour Code (IEC)	+Positive Contact (alloy type)	-Negative Contact (alloy type)	Allied Code	RS order
K	Green	+Nickel Chromium	-Nickel Alloy	70644390	<b>455-9758</b>
J	Black	+Iron	-Copper Nickel	70644386	<b>455-9708</b>
T	Brown	+Copper	-Copper Nickel	70644401	<b>455-9916</b>
E	Violet	+Nickel Chromium	-Copper Nickel	70652491	<b>774-7197</b>
N	Pink	+Nickel/Chro/Silicon	-Nickel Silicon	70644395	<b>455-9821</b>
R/S	Orange	+Copper	-Copper Alloy	70644397	<b>455-9859</b>
B	Grey	+Copper	-Copper	70652490	<b>774-7194</b>
Copper	White	+Copper	-Copper	70644383	<b>455-9663</b>

### Accessories

- Cable clamp for miniature connectors –  
Allied code 70641746  
RS order number **236-4104**
- Rubber grommet for miniature connectors –  
Allied code 70646835  
RS order number **666-7365 (25 per pack)**





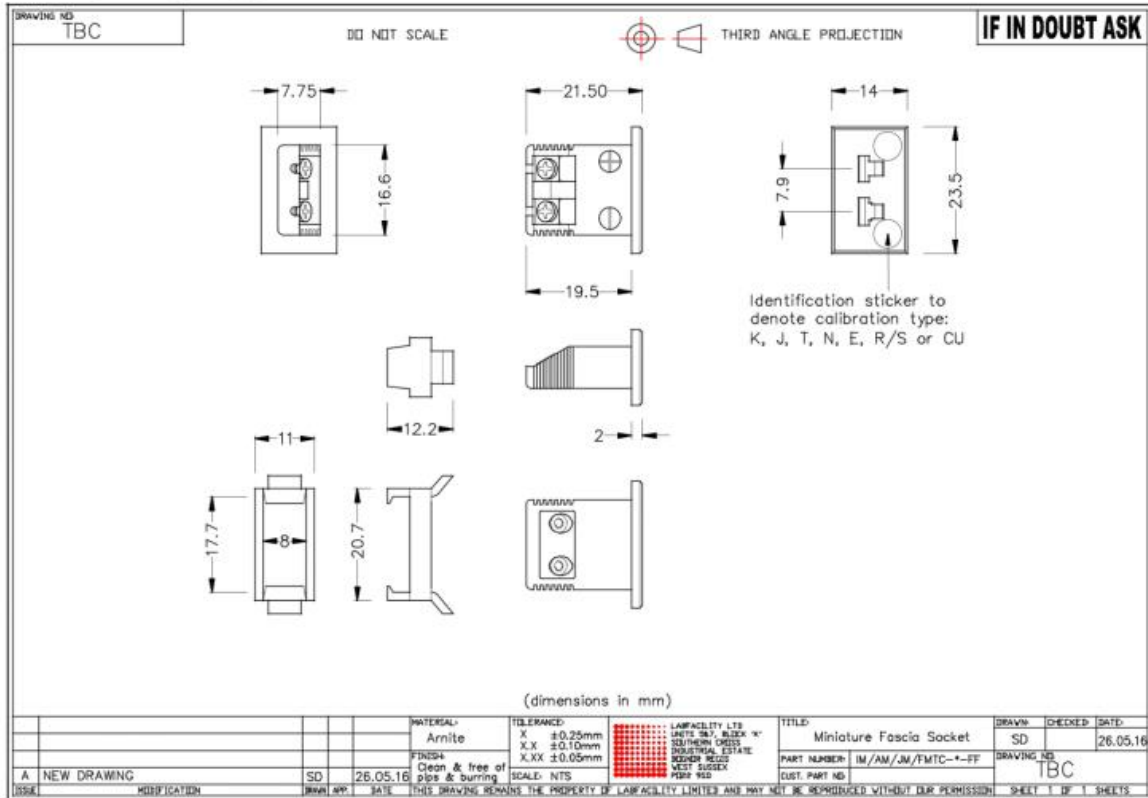
**Miniature in-line Socket**  
(dimensions in mm)

Accessories

- 1 Way Fascia Panel Allied: 70641749 RS: 236-4148
- 2 Way Fascia Panel Allied: 70643877 RS: 397-1731
- 3 Way Fascia Panel Allied: 70643878 RS: 397-1753 (shown opposite)
- 4 Way Fascia Panel Allied: 70643879 RS: 397-1769
- 6 Way Fascia Panel Allied: 70641750 RS: 236-4154



MINIATURE FASCIA SOCKET



**ORDERING INFORMATION**

**MODEL**

FINE WIRE WELDER  
Spare Carbon Electrodes (x5) for 1.1mm 250V Fine Wire Welder  
RS143/0816

**Allied Code**

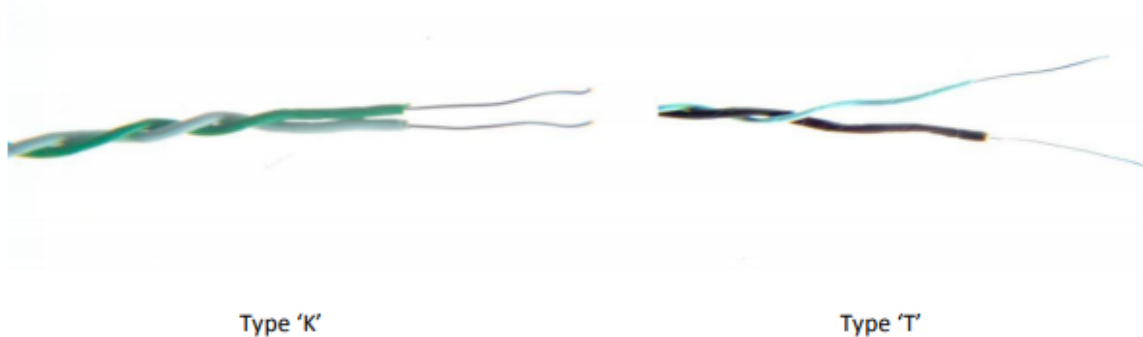
70825788  
70656473

**RS ORDER NUMBER**

363-0351  
814-0184

**IEC PTFE Insulated Twin Twisted Pair Thermocouple Cable**

Available in Thermocouple Types K, J T & N



T/C Type	Conductors	Cores	Reel Length	Allied code	RS order code
J	1/0.2mm	+Black/-White	25 metres	70657194	<b>827-5980</b>
J	1/0.2mm	+Black/-White	50 metres	70657195	<b>827-5984</b>
J	1/0.315mm	+Black/-White	25 metres	70657198	<b>827-5993</b>
J	1/0.315mm	+Black/-White	50 metres	70657199	<b>827-5996</b>
K	1/0.315mm	+Green/-White	25 metres	70657200	<b>827-6000</b>
K	1/0.315mm	+Green/-White	50 metres	70657205	<b>827-6019</b>
T	1/0.315mm	+Brown/-White	25 metres	70657208	<b>827-6028</b>
T	1/0.315mm	+Brown/-White	50 metres	70657206	<b>827-6022</b>
J	1/0.508mm	+Black/-White	25 metres	70657197	<b>827-5990</b>
J	1/0.508mm	+Black/-White	50 metres	70657201	<b>827-6003</b>
K	1/0.508mm	+Green/-White	25 metres	70657203	<b>827-6012</b>
K	1/0.508mm	+Green/-White	50 metres	70657204	<b>827-6016</b>
J	7/0.2mm	+Black/-White	25 metres	70657202	<b>827-6006</b>
K	7/0.2mm	+Green/-White	25 metres	70657207	<b>827-6025</b>
T	7/0.2mm	+Brown/-White	25 metres	70657209	<b>827-6031</b>
N	7/0.2mm	+Pink/-White	25 metres	70657210	<b>827-6034</b>

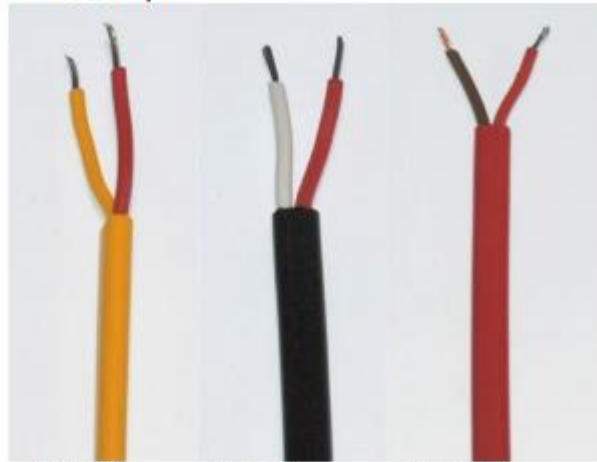
	Conductors	Cores	Jacket	Reel Length	Allied Code	RS order code
<b>Extension:</b>						
KX	7/0.2mm	+Green/-White	Green	10 metres	70657084	<b>827-5615</b>
KX	7/0.2mm	+Green/-White	Green	25 metres	70641729	<b>236-3820</b>
KX	7/0.2mm	+Green/-White	Green	50 metres	70657085	<b>827-5619</b>
KX	7/0.2mm	+Green/-White	Green	100 metres	70646156	<b>611-7889</b>
KX	7/0.2mm	+Green/-White	Green	200 metres	70657088	<b>827-5628</b>
JX	7/0.2mm	+Black/-White	Black	10 metres	70641640	<b>219-4753</b>
JX	7/0.2mm	+Black/-White	Black	25 metres	70657078	<b>827-5592</b>
JX	7/0.2mm	+Black/-White	Black	50 metres	70657079	<b>827-5596</b>
JX	7/0.2mm	+Black/-White	Black	100 metres	70641737	<b>236-3915</b>
JX	7/0.2mm	+Black/-White	Black	200 metres	70657081	<b>827-5606</b>
TX	7/0.2mm	+Brown/-White	Brown	10 metres	70641637	<b>219-4703</b>
TX	7/0.2mm	+Brown/-White	Brown	25 metres	70641734	<b>236-3870</b>
TX	7/0.2mm	+Brown/-White	Brown	50 metres	70657095	<b>827-5653</b>
TX	7/0.2mm	+Brown/-White	Brown	100 metres	70651749	<b>762-1146</b>
TX	7/0.2mm	+Brown/-White	Brown	200 metres	70657098	<b>827-5662</b>
NX	7/0.2mm	+Pink/-White	Pink	10 metres	70641635	<b>219-4668</b>
NX	7/0.2mm	+Pink/-White	Pink	25 metres	70657091	<b>827-5637</b>
NX	7/0.2mm	+Pink/-White	Pink	50 metres	70657089	<b>827-5631</b>
NX	7/0.2mm	+Pink/-White	Pink	100 metres	70657092	<b>827-5640</b>

	Conductors	Cores	Jacket	Reel Length	Allied Code	RS order code
<b>Compensating:</b>						
VX (KCB)	7/0.2mm	+Green/-White	Green	10 metres	70657082	827-5609
VX (KCB)	7/0.2mm	+Green/-White	Green	25 metres	70641629	219-4551
VX (KCB)	7/0.2mm	+Green/-White	Green	50 metres	70657080	827-5603
VX (KCB)	7/0.2mm	+Green/-White	Green	100 metres	70641630	219-4573
VX (KCB)	7/0.2mm	+Green/-White	Green	200 metres	70657083	827-5612
VX (KCB)	13/0.2mm	+Green/-White	Green	10 metres	70657086	827-5621
VX (KCB)	13/0.2mm	+Green/-White	Green	25 metres	70657087	827-5625
VX (KCB)	13/0.2mm	+Green/-White	Green	50 metres	70657090	827-5634
VX (KCB)	13/0.2mm	+Green/-White	Green	100 metres	70651750	762-1152
U (RCA)	7/0.2mm	+Orange/-White	Orange	10 metres	70657096	827-5656
U (RCA)	7/0.2mm	+Orange/-White	Orange	25 metres	70646158	611-7902
U (RCA)	7/0.2mm	+Orange/-White	Orange	50 metres	70657097	827-5659
U (RCA)	13/0.2mm	+Orange/-White	Orange	10 metres	70641641	219-4769
U (RCA)	13/0.2mm	+Orange/-White	Orange	25 metres	70657093	827-5643
U (RCA)	13/0.2mm	+Orange/-White	Orange	50 metres	70657094	827-5647
RS143/0816						

T/C Type	Conductors	Cores	Reel Length	Allied code	RS order code
KX	1/0.2mm	+Yellow/-Red	25 metres	70656106	814-0030
KX	1/0.2mm	+Yellow/-Red	50 metres	70656111	814-0049
KX	1/0.2mm	+Yellow/-Red	100 metres	70656109	814-0042
KX	7/0.2mm	+Yellow/-Red	25 metres	70656110	814-0046
KX	7/0.2mm	+Yellow/-Red	50 metres	70656113	814-0055
KX	7/0.2mm	+Yellow/-Red	100 metres	70656114	814-0058
KX	1/0.3mm	+Yellow/-Red	25 metres	70656104	814-0024
KX	1/0.3mm	+Yellow/-Red	50 metres	70656107	814-0033
KX	1/0.3mm	+Yellow/-Red	100 metres	70656108	814-0036
TX	1/0.3mm	+Blue/-Red	25 metres	70656121	814-0080
TX	1/0.3mm	+Blue/-Red	50 metres	70656126	814-0099
TX	1/0.3mm	+Blue/-Red	100 metres	70656124	814-0092
TX	1/0.2mm	+Blue/-Red	25 metres	70656125	814-0096
TX	1/0.2mm	+Blue/-Red	50 metres	70656128	814-0106
TX	1/0.2mm	+Blue/-Red	100 metres	70656129	814-0109

## ANSI PVC Thermocouple Extension & Compensating Cable

PVC Insulated Flat Pair (ANSI MC96.1)



Type KX

Type JX

Type TX

T/C Type	Conductors	Cores	Jacket	Reel Length	Allied code	RS order code
<b>Extension:</b>						
KX	7/0.2mm	+Yellow/-Red	Yellow	25 m	70656102	<b>814-0018</b>
KX	7/0.2mm	+Yellow/-Red	Yellow	100 m	70656105	<b>814-0027</b>
KX	7/0.2mm	+Yellow/-Red	Yellow	200 m	70656103	<b>814-0020</b>
JX	7/0.2mm	+ White/-Red	Black	25 m	70656096	<b>813-9995</b>
JX	7/0.2mm	+ White/-Red	Black	100 m	70656098	<b>814-0005</b>
JX	7/0.2mm	+ White/-Red	Black	200 m	70656099	<b>814-0008</b>
TX	7/0.2mm	+Blue/-Red	Blue	25 m	70656119	<b>814-0074</b>
TX	7/0.2mm	+Blue/-Red	Blue	100 m	70656122	<b>814-0083</b>
TX	7/0.2mm	+Blue/-Red	Blue	200 m	70656123	<b>814-0086</b>
<b>Compensating:</b>						
VX (KCB)	7/0.2mm	+Yellow/-Red	Yellow	25 m	70656127	<b>814-0103</b>
VX (KCB)	7/0.2mm	+Yellow/-Red	Yellow	100 m	70656130	<b>814-0112</b>
VX (KCB)	7/0.2mm	+Yellow/-Red	Yellow	200 m	70656131	<b>814-0115</b>