

---

## EPIC H-D Contact Heavy Duty Connectors

### Contact Connectors

**Assembled connectors are type tested to 10A 250V a.c. and include the following features:**

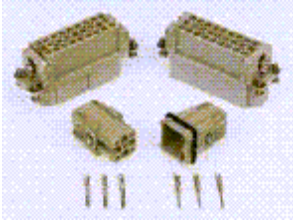
- High density contact loading gives more power and control connections in smaller shell sizes
- Machined contacts provide reliable interconnection and serviceability. Order contacts separately
- HD contacts are terminated simply and effectively using a quality 8 point indent crimp tool **531-403**.
- 7 way versions have resilient thermoplastic bodies. Whilst larger sizes have lightweight cast metal bodies
- Coupled connectors have protection ratings ranging from IP54 to IP65 depending on shell size (see technical information)
- Plug and socket inserts are interchangeable and a separate earth connection is made through all inserts. The earth is connected to metal body shells.

**Note:** Connectors should not be coupled and decoupled under electrical load. Connectors of the same or different series being mounted side by side may be protected against incorrect mating by the use of coding options.

technical specification	
Ways:	7-way, Plastic Body 15, 25, 40, 64 Metal Body
Operating current	10A max
Working voltage	250V a.c.
Test voltage	4kV eff
Contact resistance	≤m Ohm
Temperature range	-40°C to +125°C
Environmental rating	
7 way	IP54
15 and 25 way	IP55
25, 40 and 64 way	IP65
Approvals:	VDE 0110/72, 0110b, 79, VDE 0627/86, SEV, UL, CSA

## H-D Inserts Using Formed Crimped Contacts

### Contact Connectors



Compatibility			
Insert	Hoods	Surface Base	Panel Mount
	stock no	stock no	stock no
HD-7	<a href="#">284-6729</a> <a href="#">284-6735</a>		<a href="#">284-8365</a> <a href="#">284-6858</a>
HD-15	<a href="#">284-6779</a>	<a href="#">398-4355</a>	<a href="#">284-8371</a>
HD-25	<a href="#">284-6785</a>	<a href="#">398-4579</a>	<a href="#">284-8387</a>
HD-40	<a href="#">448-727</a>	<a href="#">448-856</a>	<a href="#">448-812</a>
HD-64	<a href="#">448-733</a>	<a href="#">448-862</a>	<a href="#">448-828</a>

x = 1

Contact Part no	No of Ways/ Type	stock no.
11.2500	H-D7 male	398-4434
11.2510	H-D7 female	398-4440
11.2550	H-D7 male	398-4456
11.2560	H-D7 female	398-4462
11.2600	H-D7 male	398-4478
11.2610	H-D7 female	398-4484
11.2650	H-D7 male	398-4490
11.2660	H-D7 female	398-4507
11.2700	H-D7 male	398-4513
11.2710	H-D7 female	398-4529

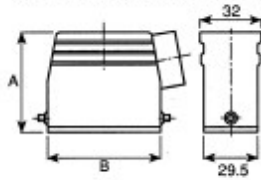
x = 100

Type	Size	Stock no
Pin	0.5-1.5mm <sup>2</sup>	398-4535
Socket	0.5-1.5mm <sup>2</sup>	398-4541

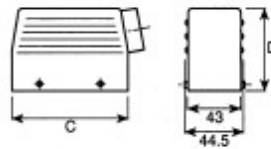
x = 1

Type	Stock no.
Tooling	
Crimp Tool	531-403
HD Die Set	398-4557
HD Locator	398-4563

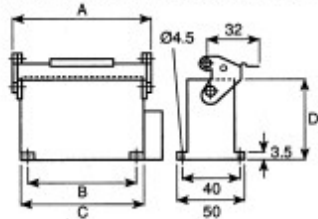
15 and 25 way side entry plugs



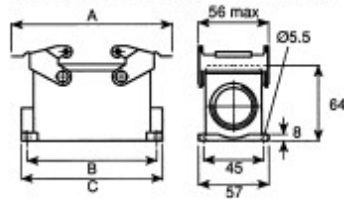
40 and 64 way side entry plugs



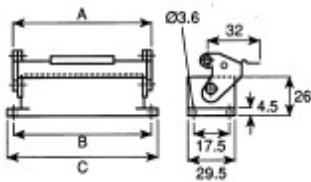
15 and 25 way surface mount sockets



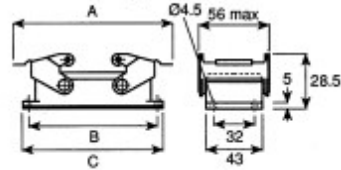
40 and 64 way surface mount sockets



15 and 25 way panel mount sockets



40 and 64 way panel mount sockets



### Dimensions

<i>type</i>	<i>no. of ways</i>	<i>A</i>	<i>B</i>	<i>C</i>	<i>D</i>	<i>gland size</i>
plug	7	(see drawings)				PG11
plug	15	53	63	—	—	PG16
plug	25	58	79	—	—	PG16
plug	40	—	—	93	61	PG21
plug	64	—	—	119.5	70	PG21
surface skt.	15	76	48	64	52	PG16
surface skt.	25	92	64	80	57	PG16
surface skt.	40	141	105	117	—	PG21
surface skt.	64	167	132	143.5	—	PG21
panel skt.	15	76	70	81	—	
panel skt.	25	92	86	96	—	
panel skt.	40	141	103	113	—	
panel skt.	64	167	130	140	—	