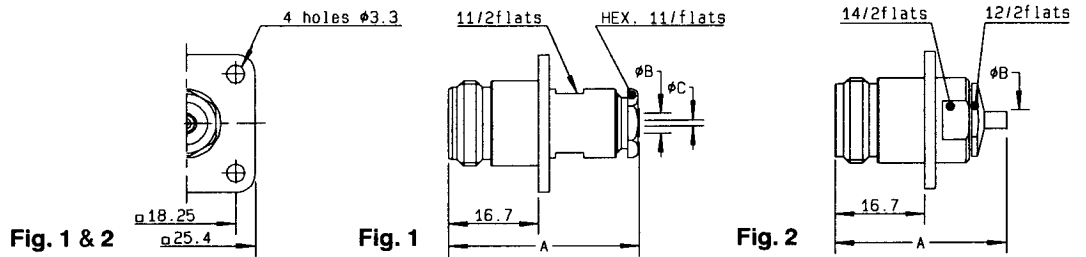
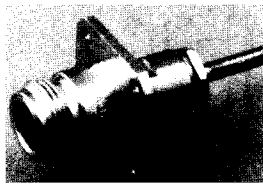
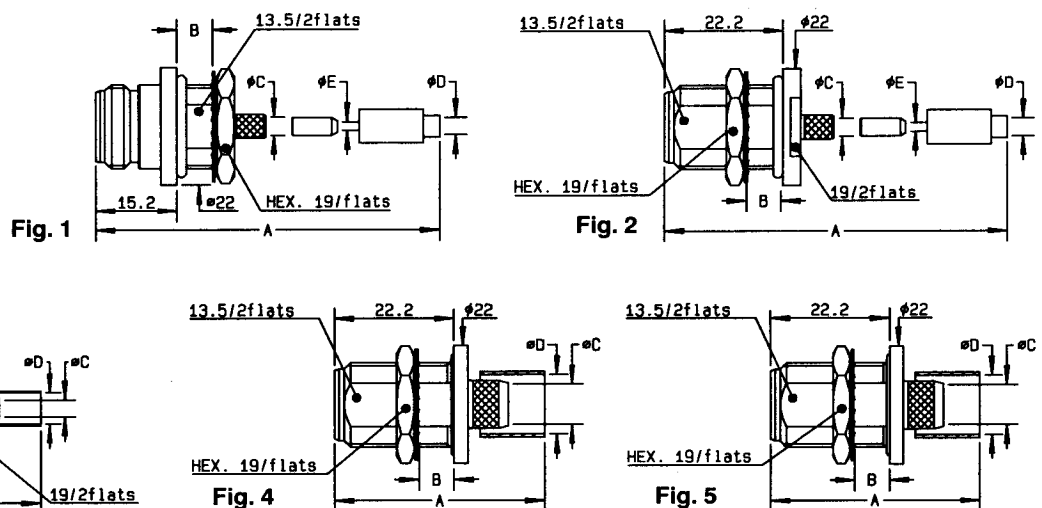


25.4 mm SQUARE FLANGE, STRAIGHT JACKS, FOR SEMI RIGID CABLES (25.4 mm = 1 inch)



cable group	part number	fig.	dimensions (mm)			captured center contact	mounting	panel	note
			A	B	C				
.085	R161 276 300	2	32	2.25		NO	M21	P01	Solder type
.141	R161 277 000	1	35.5	5.6	3.65	NO	M06	P01	Clamp type
.141	R161 277 020●	1	35.5	5.6	3.65	YES	M06	P01	Clamp type
.141	R161 277 300	2	32	3.65		NO	M21	P01	Solder type
.250	R161 278 300	2	32	6.6		NO	M21	P01	Solder type

BULKHEAD STRAIGHT JACKS, CRIMP TYPE, FOR FLEXIBLE CABLES (PANEL SEALED)

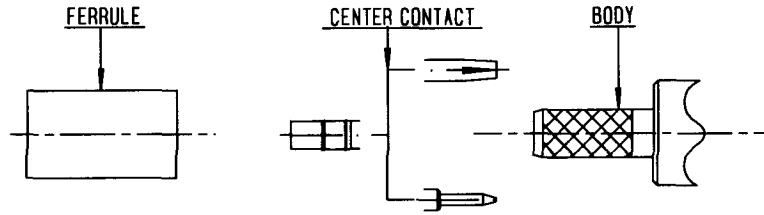


cable group	part number	fig.	dimensions (mm)					captured center contact	mounting	panel	note
			A	B	C	D	E				
2 / 50 / S+D	R161 309 000	1	40.4	6.5	3.45	3.25	1	YES	M09	P10	Front mount
2 / 50 / S+D	R161 309 200	2	40.4	6.5	3.45	3.25	1	YES	M09	P10	Rear mount
2.6 / 50 / S+D	R161 311 200	1	40.4	6.5	3.45	3.25	1.63	YES	M09	P10	Front mount
2.6 / 50 / S+D	R161 311 300	2	40.4	6.5	3.45	3.25	1.63	YES	M09	P10	Rear mount
5 / 50 / S	R161 329 130	3	39.8	6.5	3.11	5.41		YES	M12	P10	Cable LMR 200 / Rear mount
5 / 50 / S	R161 329 000	3	39.8	6.5	3.11	5.41		YES	M12	P10	Rear mount
5 / 50 / D	R161 329 200	3	39.8	6.5	3.11	5.8		YES	M12	P10	Rear mount
10 / 50 / S	R161 331 000	4	40.6	6.5	7.46	11.05		YES	M10	P10	Rear mount
10.3 / 50 / S	R161 331 060	5	46.88	6.5	7.46	11.05		YES	M11	P10	Cable LMR 400 / Rear mount
11 / 50 / D	R161 331 200	4	40.6	6.5	7.46	11.4		YES	M10	P10	Rear mount
15.2 / 50 / S	R161 331 400	5	49.9	6.5	11.96	15.88		YES	M11	P10	Cable LMR 600 / Rear mount / Solder type center contact

● Upon request

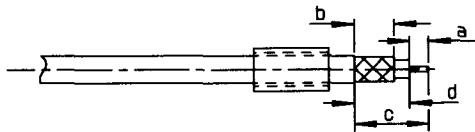
Note : standard packaging = 50 pieces. For unit packaging, add "W" after the P/N.

# M 10



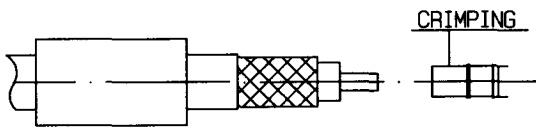
CONNECTORS	Stripping length			
	a	b	c	d
R161 075 000 R161 088 000 R161 241 000 R161 243 000 R161 286 000 R161 286 200 R161 331 000 R161 331 200	.197 (5mm)	.315 (8mm)	.551 (14mm)	.354 (9mm)
R161 075 060 R161 076 000		.354 (9mm)	.591 (15mm)	.394 (10mm)

1



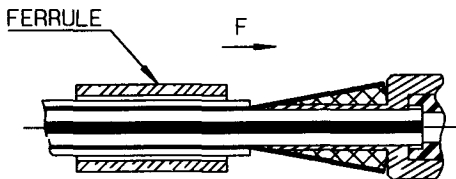
- 1.1 Slide the ferrule onto the cable.
- 1.2 Strip the cable.

2



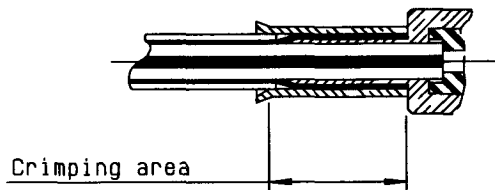
- 2.1 Slide on center contact until it bottoms against cable dielectric.
- 2.2 crimp center contact with crimping tool: R282 231 000 Hex.01 (2.54) or MIL standard crimping tool R282 293 000 (M22520/5-01) + MIL standard dies R282 235 116 (Y116 DANIELS).

3



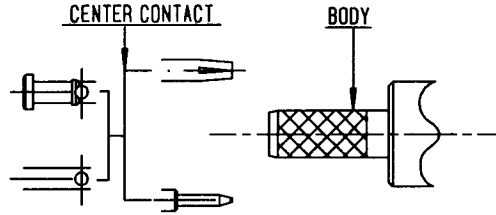
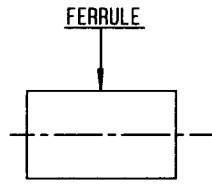
- 3.1 Fan the braid.
- 3.2 Slide cable dielectric into the body while gently guiding the braid over the knurl.
- 3.3 Push until the dielectric clicks into position.
- 3.4 Slide ferrule over the braid. (In direction F).

4



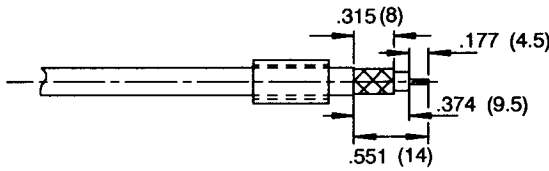
- 4.1 Crimp the ferrule with crimping tool R282 231 000 Hex.415 (10.54) or MIL standard crimping tool R282 293 000 (M22520/5-01) + MIL standard dies R282 235 116 (Y116 DANIELS).
- 4.2 Cut the excess of braid.

# M 12



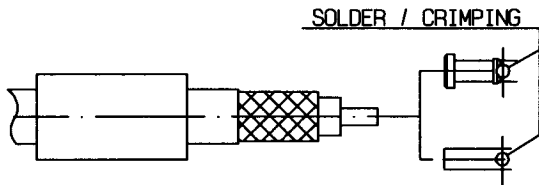
CONNECTORS	R161 082 000	R161 282 000
	R161 082 200	R161 283 000
	R161 083 000	R161 329 000
	R161 237 000	R161 329 130
	R161 238 000	R161 329 200

1



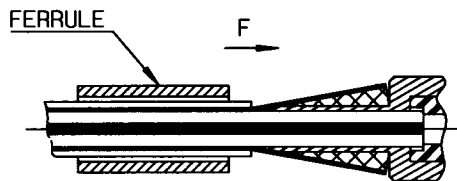
- 1.1 Slide onto the cable the ferrule.
- 1.2 Strip the cable.

2



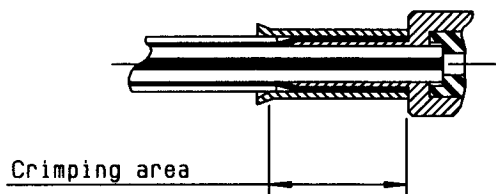
- 2.1 Slide on center contact until it bottoms against cable dielectric.
- 2.2 Solder or crimp center contact with crimping tool R282 223 000 Hex .068(1.73) or MIL standard crimping tool R282 293 000 (M22520/5-01) + MIL standard dies R282 235 011 (M22520/5-11).

3

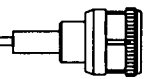


- 3.1 Fan the braid.
- 3.2 Slide cable into the body until bottoms against insulator.
- 3.3 Slide ferrule over the braid. (In direction F).

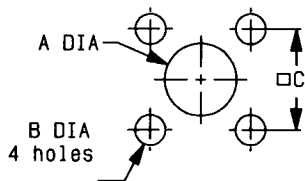
4



- 4.1 Crimp the ferrule with crimping tool R282 223 000 Hex .213 (5.41) or MIL standard crimping tool R282 293 000 (M22520/5-01) + MIL standard dies R282 235 011 (M22520/5-11)
- 4.2 Cut the excess of braid.

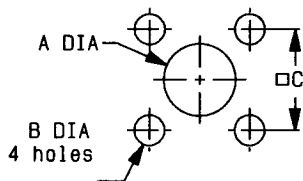


**P01**



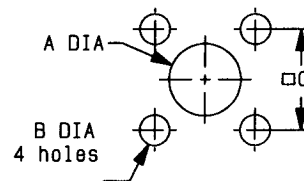
	MM		INCH	
	maxi	mini	maxi	mini
A	16.3	16.1	0.642	0.634
B	3.30	3.20	0.13	0.126
C	18.35	18.15	0.722	0.715

**P02**



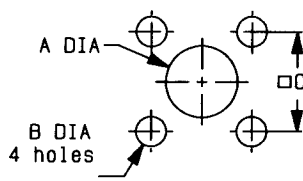
	MM		INCH	
	maxi	mini	maxi	mini
A	15.1	14.9	0.594	0.587
B	3.30	3.20	0.13	0.126
C	18.35	18.15	0.722	0.715

**P03**



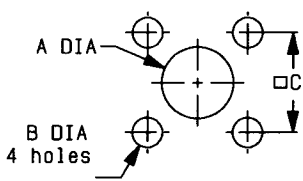
	MM		INCH	
	maxi	mini	maxi	mini
A	9.40	9.20	0.37	0.362
B	3.30	3.20	0.13	0.126
C	12.8	12.6	0.504	0.496

**P04**



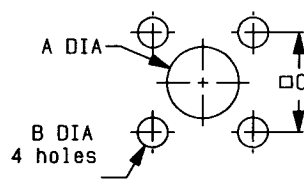
	MM		INCH	
	maxi	mini	maxi	mini
A Front	21.7	21.5	0.854	0.846
A Rear	19.7	19.5	0.776	0.768
B	3.30	3.20	0.13	0.126
C	18.35	18.15	0.722	0.715

**P05**



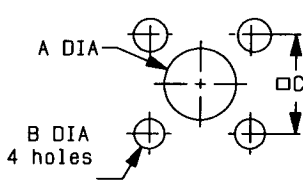
	MM		INCH	
	maxi	mini	maxi	mini
A Front	16.3	16.1	0.642	0.634
A Rear	18	17.8	0.709	0.701
B	3.30	3.20	0.13	0.126
C	18.35	18.15	0.722	0.715

**P06**



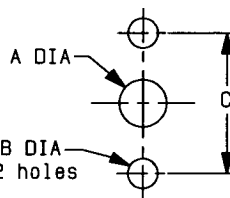
	MM		INCH	
	maxi	mini	maxi	mini
A Front	16.3	16.1	0.642	0.634
A Rear	19.7	19.5	0.776	0.768
B	3.30	3.20	0.13	0.126
C	18.35	18.15	0.722	0.715

**P07**



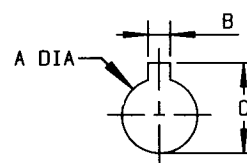
	MM		INCH	
	maxi	mini	maxi	mini
A Front	16.3	16.1	0.642	0.634
A Rear	15.1	14.9	0.594	0.587
B	3.30	3.20	0.13	0.126
C	18.35	18.15	0.722	0.715

**P08**



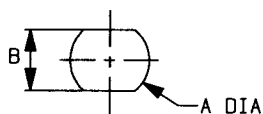
	MM		INCH	
	maxi	mini	maxi	mini
A	5	4.80	0.197	0.189
B	3.30	3.20	0.13	0.126
C	18.1	17.9	0.713	0.705

**P09**



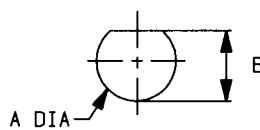
	MM		INCH	
	maxi	mini	maxi	mini
A	14.3	14.1	0.563	0.555
B	2.30	2.20	0.091	0.087
C	17	16.8	0.669	0.661

**P10**



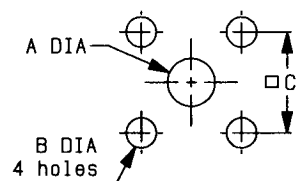
	MM		INCH	
	maxi	mini	maxi	mini
A	16.1	16	0.634	0.63
B	13.7	13.6	0.539	0.535

**P11**

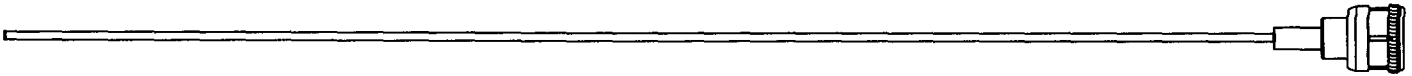


	MM		INCH	
	maxi	mini	maxi	mini
A	14.3	14.1	0.563	0.555
B	13.8	13.6	0.543	0.535

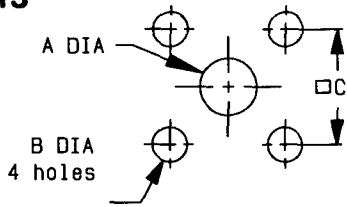
**P12**



	MM		INCH	
	maxi	mini	maxi	mini
A	1.45	1.35	0.057	0.053
B	3.23	3.13	0.127	0.123
C	10.21	10.11	0.402	0.398

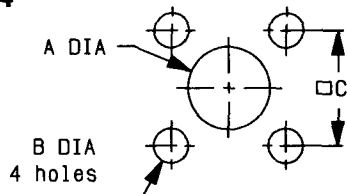


**P13**



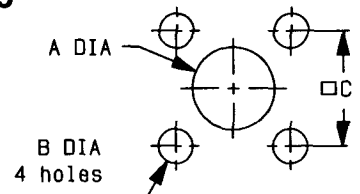
	MM		INCH	
	maxi	mini	maxi	mini
A	4.2	4.1	0.165	0.161
B	2.7	2.6	0.106	0.102
C	8.69	8.59	0.342	0.338

**P14**



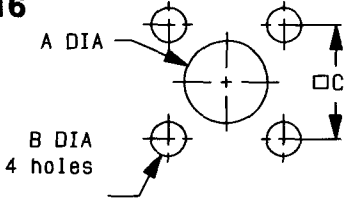
	MM		INCH	
	maxi	mini	maxi	mini
A Front	16.3	16.1	0.642	0.634
A Rear	12.5	12.3	0.492	0.484
B	3.3	3.2	0.13	0.126
C	18.35	18.15	0.722	0.715

**P15**



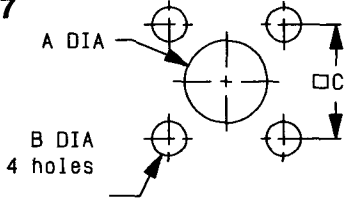
	MM		INCH	
	maxi	mini	maxi	mini
A Front	16.3	16.1	0.642	0.634
A Rear	4.2	4.1	0.165	0.161
B	3.3	3.2	0.13	0.126
C	18.35	18.15	0.722	0.715

**P16**



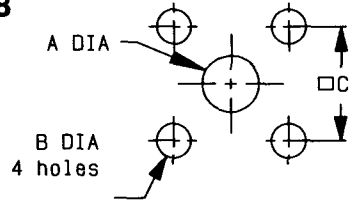
	MM		INCH	
	maxi	mini	maxi	mini
A	29.5	29.3	1.161	1.153
B	3.7	3.6	0.146	0.142
C	24.8	24.7	0.976	0.972

**P17**



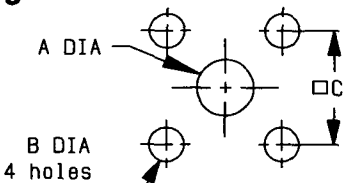
	MM		INCH	
	maxi	mini	maxi	mini
A	12.5	12.3	0.492	0.484
B	3.3	3.2	0.13	0.126
C	18.35	18.15	0.722	0.715

**P18**



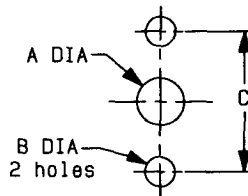
	MM		INCH	
	maxi	mini	maxi	mini
A	4.2	4.1	0.165	0.161
B	3.3	3.2	0.13	0.126
C	18.35	18.15	0.722	0.715

**P19**



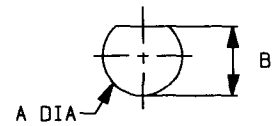
	MM		INCH	
	maxi	mini	maxi	mini
A	7.1	7	0.279	0.275
B	3.4	3.3	0.134	0.13
C	18.35	18.15	0.722	0.715

**P20**



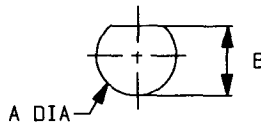
	MM		INCH	
	maxi	mini	maxi	mini
A	4.2	4.1	0.165	0.161
B	2.7	2.6	0.106	0.102
C	12.25	12.15	0.482	0.478

**P21**



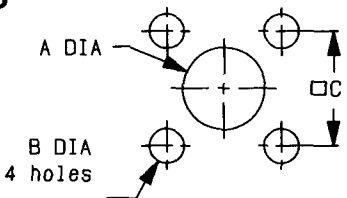
	MM		INCH	
	maxi	mini	maxi	mini
A	13	12.8	0.511	0.504
B	12.1	11.9	0.476	0.468

**P22**



	MM		INCH	
	maxi	mini	maxi	mini
A	16.1	15.9	0.633	0.626
B	15.1	14.9	0.594	0.586

**P23**



	MM		INCH	
	maxi	mini	maxi	mini
A Front	32.4	32.2	1.276	1.267
A Rear	16.4	16.2	0.646	0.638
B	6.6	6.5	0.26	0.256
C	36.6	36.4	1.441	1.433