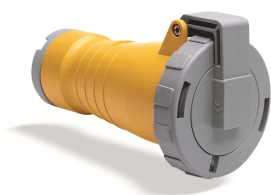

PRODUCT-DETAILS

216C4W

Ind. P&S#216C4W



General Information

Extended Product Type	216C4W
Product ID	2CMA166536R1000
EAN	7392696665360
Catalog Description	Ind. P&S#216C4W
Long Description	Connector, earthing sleeve position 4h, rated current 16A, IP67 watertight, 2-poles+earth, frequency 50-60 Hz, color code Yellow

Ordering

E-Number (Sweden)	2416360
E-Number (Finland)	2420026
E-Number (Norway)	2416360
EAN	7392696665360
Country of Origin	Czech Republic (CZ)
Minimum Order Quantity	1 piece

Dimensions

Product Net Width	70 mm
Product Net Height	80 mm

Product Net Weight	0.244 kg
--------------------	----------

Container Information

Package Level 1 Width	95 mm
Package Level 1 Depth / Length	95 mm
Package Level 1 Height	175 mm
Package Level 1 Gross Weight	0.281 kg
Package Level 1 EAN	7392696665360
Package Level 1 Units	box 1 piece
Package Level 2 Width	800 mm
Package Level 2 Depth / Length	1200 mm
Package Level 2 Height	900 mm
Package Level 2 Gross Weight	132.4 kg
Package Level 2 EAN	7392696069052
Package Level 2 Units	pallet (lift) 400 piece

Environmental

RoHS Status	Following EU Directive 2011/65/EU
-------------	-----------------------------------

Certificates and Declarations (Document Number)

Declaration of Conformity - CE	2CMC700005D0001
Environmental Information	2CMC000056M0000
RoHS Information	2CMC700005D0001
SEMKO Certificate	1614200
REACH Declaration	2CMC700005D0001

Additional Information

Additional Information	2P+E
Ambient Temperature	-25 ... 40 °C
Cable Cross-Section	1 ... 2.5 mm ²
Cable Diameter	6 ... 13 mm
Cable Entry Position	Cable entry compression gland
Color	Yellow
Connection Type	Screw
Degree of Protection	IP67 IP69
Frequency (f)	50 Hz 60 Hz
Function	Connector
Housing Material	Thermoplastic (PBT)

Invoice Description	Ind. P&S#216C4W
Number of Poles	3
Order Multiple	1 piece
Product Main Type	TC
Product Name	Industrial Connector
Protection Type	Watertight
Rated Current (I_n)	16 A
Rated Voltage (U_r)	100 ... 130 V
Recommended Screw Driver	PH2
Standards	IEC 60309-1, -2
Suitable For	Connectors
Suitable for Product Class	IEC Industrial Plugs and Sockets
Instructions and Manuals	2CMC700014C0016
RAL Number	RAL 7001 - Silver Grey

Classifications

eClass	27440509
UNSPSC	39120000

Technical

Wire Size	14 ... 12 AWG
Tightening Torque	WireClamp0.8 N·m

Categories

Low Voltage Products and Systems → Industrial Plugs and Sockets → Tough & Safe → Connectors

