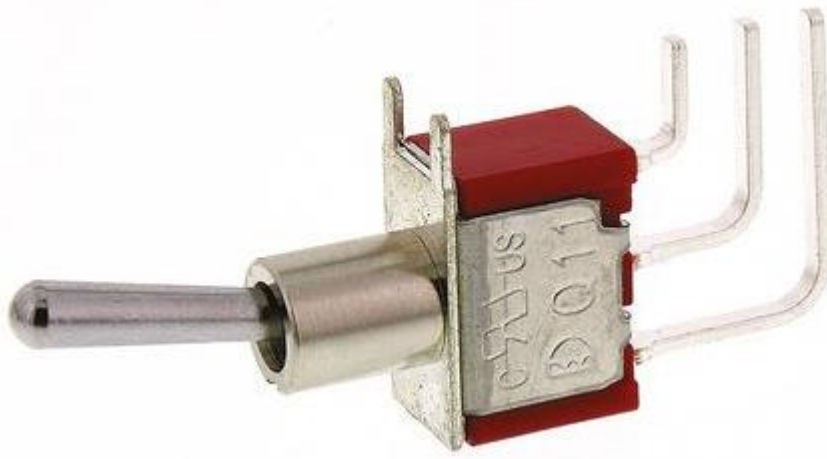


## Datasheet

### Miniature Toggle Switch

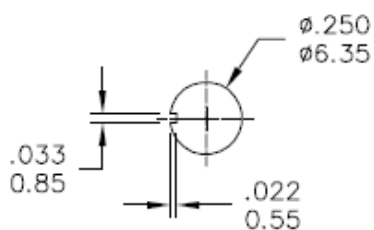
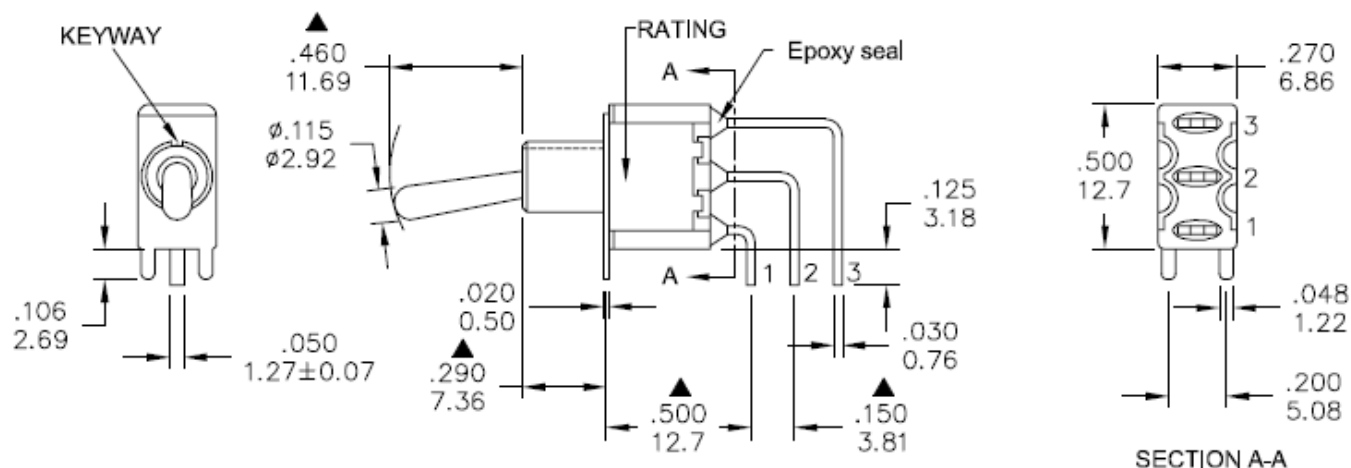
RS Stock number 734-7081



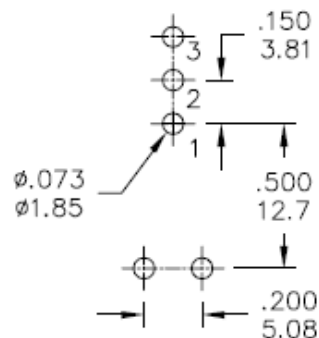
#### Specifications:

MECHANICAL LIFE:	40,000 make-and-break cycles.
CONTACT RESISTANCE:	10m $\Omega$ max. initial @ 2-4VDC 100mA for both silver and gold plated contacts
INSULATION RESISTANCE:	1000M $\Omega$ min.
DIELECTRIC STRENGTH:	1,000Vrms min. @ sea level.
OPERATING TEMPERATURE:	-30°C to 85°C.
CASE:	Dially phthalate (DAP) UL94v-0)
ACTUATOR:	Brass, chrome plated
Bushing:	Brass, nickel plated
Housing:	Stainless steel
CONTACT/TERMINAL:	Silver or gold plated
Switch Support:	Brass, tin plated

**Dimensions – inch  
mm**



PANEL MOUNTING



P.C. MOUNTING

Model No.	POS.1	POS.2	POS.3
1MS1	ON	NONE	ON
Term. Comm.	2-3	N/A	2-1
SCHEMATIC		N/A	

SWITCH FUNCTION