



CIRCUIT-BREAKER SZ S0, FOR MOTOR PROTECTION,
CLASS 10, A-RELEASE 23...28A, N-RELEASE 364A,
SPRING-L. CONNECTION, STANDARD SW. CAPACITY,

General technical data:		
product brand name		SIRIUS
product designation		3RV2 circuit breaker
Size of the circuit-breaker		S0
Trip class		CLASS 10
Protection class IP / on the front		IP20
Degree of pollution		3
Installation altitude / at a height over sea level / maximum	m	2,000
Ambient temperature		
• during storage	°C	-50...+80
• during operating	°C	-20...+60
• during transport	°C	-50...+80
Resistance against shock		25g / 11 ms
Impulse voltage resistance / rated value	kV	6
Insulation voltage / rated value	V	690
Active power loss / total / typical	W	10.8
Item designation		
• according to DIN 40719 extendable after IEC 204-2 / according to IEC 750		F
• according to DIN EN 61346-2		F
Mechanical operating cycles as operating time		
• of the main contacts / typical		100,000
• of the auxiliary contacts / typical		100,000
Type of the driving mechanism / motor drive		No
Design of the operating mechanism		selector switch
Product function		
• overload protection		Yes

<ul style="list-style-type: none"> • phase disturbance recognition 	Yes
Product component	
<ul style="list-style-type: none"> • auxiliary switch 	No
<ul style="list-style-type: none"> • undervoltage release mechanism 	No
<ul style="list-style-type: none"> • trip indicator 	No
Product extension / optional / motor drive	No

Main circuit:

Number of poles / for main current circuit		3
Operating voltage / at AC-3 / rated value / maximum	V	690
Operating current / at AC-3 / at 400 V / rated value	A	28
Service power / at AC-3		
<ul style="list-style-type: none"> • at 400 V / rated value 	W	11,000
<ul style="list-style-type: none"> • at 500 V / rated value 	W	18,500
<ul style="list-style-type: none"> • at 690 V / rated value 	W	22,000
Frequency of operation / at AC-3 / according to IEC 60947-6-2 / maximum	1/h	15
Arrangement of electrical connectors / for main current circuit		Top and bottom
Adjustable response current		
<ul style="list-style-type: none"> • of the non-delayed short-circuit release 	A	364...364
<ul style="list-style-type: none"> • of the current-dependent overload release 	A	23...28
Service power / at AC-3 / at 230 V / rated value	W	7,500
Continuous current / rated value	A	28

Auxiliary circuit:

Product extension / auxiliary switch	Yes
Number of NC contacts / for auxiliary contacts / instantaneous switching	0
Number of NO contacts / for auxiliary contacts / instantaneous switching	0
Number of change-over switches / for auxiliary contacts	0

Inputs/ Outputs:

Number of digital inputs	0
---------------------------------	---

Short-circuit:

Breaking capacity limit short-circuit current (Icu)		
<ul style="list-style-type: none"> • at 400 V / rated value 	A	55,000
<ul style="list-style-type: none"> • at 500 V / rated value 	A	10,000
<ul style="list-style-type: none"> • at 690 V / rated value 	A	4,000
Design of the overcurrent release and short-circuit release		thermomagnetic

Installation/mounting/dimensions:

Built in orientation		any
Type of mounting		screw and snap-on mounting onto 35 mm standard mounting rail according to DIN EN 60715
Width	mm	45
Height	mm	119
Depth	mm	91
Distance, to be maintained, to the ranks assembly		
<ul style="list-style-type: none"> • forwards 	mm	0
<ul style="list-style-type: none"> • backwards 	mm	0
<ul style="list-style-type: none"> • upwards 	mm	50
<ul style="list-style-type: none"> • downwards 	mm	50
<ul style="list-style-type: none"> • sideways 	mm	0
Distance, to be maintained, to earthed part		
<ul style="list-style-type: none"> • forwards 	mm	0
	mm	0

<ul style="list-style-type: none"> backwards upwards sidewards downwards 	mm	50
	mm	30
	mm	50
Distance, to be maintained, conductive elements		
<ul style="list-style-type: none"> forwards backwards upwards downwards sidewards 	mm	0
	mm	0
	mm	50
	mm	50
	mm	30

Connections:

Product function	
<ul style="list-style-type: none"> removable terminal for main circuit removable terminal for auxiliary and control circuit 	No No
Design of the electrical connection	
<ul style="list-style-type: none"> for main current circuit 	spring-loaded terminals
Type of the connectable conductor cross-section	
<ul style="list-style-type: none"> for main contacts solid finely stranded with conductor end processing without conductor final cutting for AWG conductors / for main contacts 	2x (1 ... 10 mm ²) 2x (1 ... 6 mm ²) 2x (1 ... 6 mm ²) 2x (18 ... 8)

Certificates/approvals:

Verification of suitability	CE / UL / CSA
<ul style="list-style-type: none"> für Staubexplosionsschutz für Zone 21/22 for gas explosion protection for zone 1/2 	no no

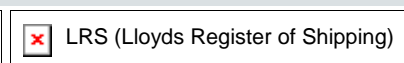
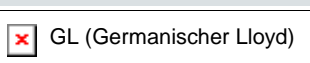
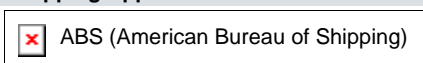
General Product Approval



ROSTEST


For use in hazardous lo
DEKRA EXAM, DMT

Shipping Approval



other

Manufacturer

other



UL/CSA ratings

yielded mechanical performance (hp)	
<ul style="list-style-type: none"> for single-phase squirrel cage motors at 110/120 V / rated value at 230 V / rated value for three-phase squirrel cage motors at 200/208 V / rated value at 220/230 V / rated value at 460/480 V / rated value 	hp 2 hp 5 hp 7.5 hp 10 hp 20
Operating current (FLA) / for three-phase squirrel cage motors	
<ul style="list-style-type: none"> at 480 V / rated value 	A 27

Safety:

B10 value / with high demand rate	
--	--

<ul style="list-style-type: none"> • according to SN 31920 	50,000	
T1 value / for proof test interval or service life		
<ul style="list-style-type: none"> • according to IEC 61508 	a	10
Failure rate (FIT value) / with low demand rate		
<ul style="list-style-type: none"> • according to SN 31920 	FIT	50
Proportion of dangerous failures		
<ul style="list-style-type: none"> • with low demand rate / according to SN 31920 	%	40
<ul style="list-style-type: none"> • with high demand rate / according to SN 31920 	%	40
Protection against electrical shock	finger-safe	

Further information:

Information- and Downloadcenter (Catalogs, Brochures,...)

<http://www.siemens.com/industrial-controls/catalogs>

Industry Mall (Online ordering system)

<http://www.siemens.com/industrial-controls/mall>

CAX-Online-Generator

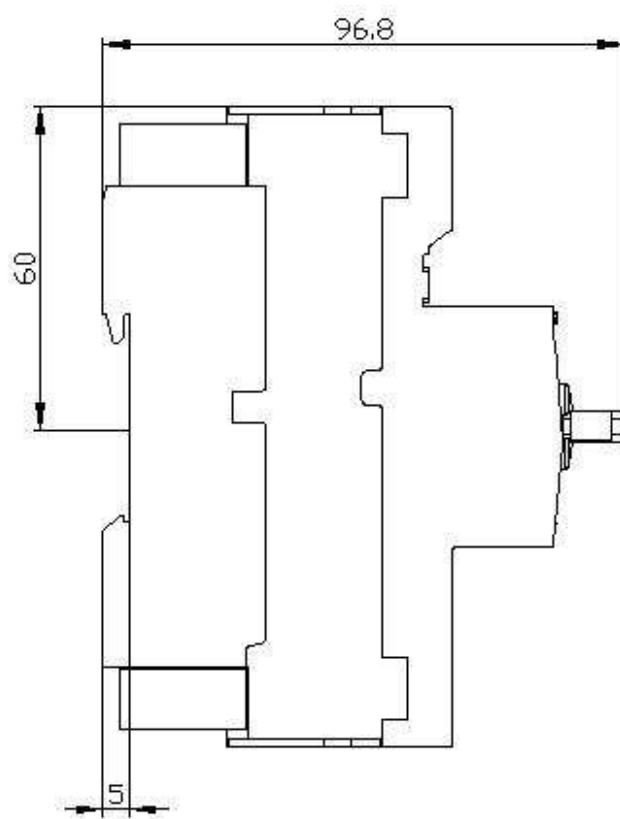
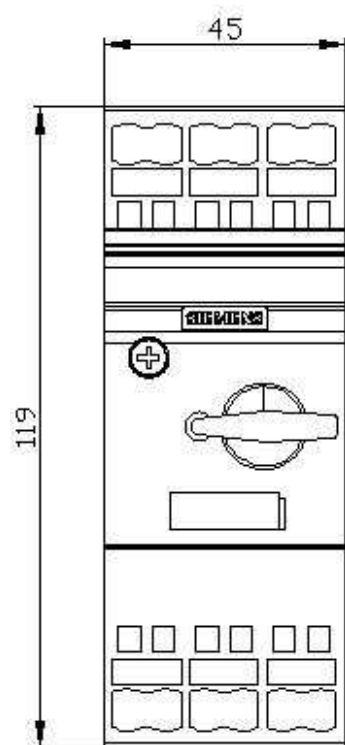
<http://www.siemens.com/cax>

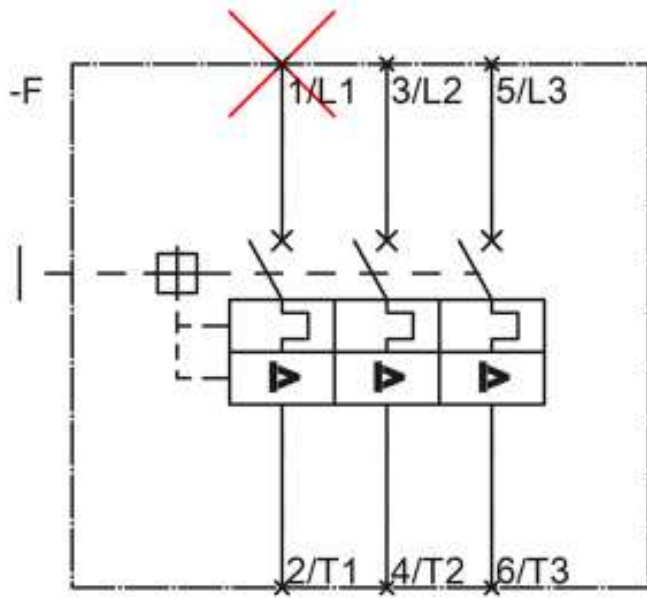
Service&Support (Manuals, Certificates, Characteristics, FAQs,...)

<http://support.automation.siemens.com/WW/view/en/3RV2021-4NA20/all>

Image database (product images, 2D dimension drawings, 3D models, device circuit diagrams, ...)

http://www.automation.siemens.com/bilddb/cax_en.aspx?mlfb=3RV2021-4NA20





last change:

Feb 6, 2012