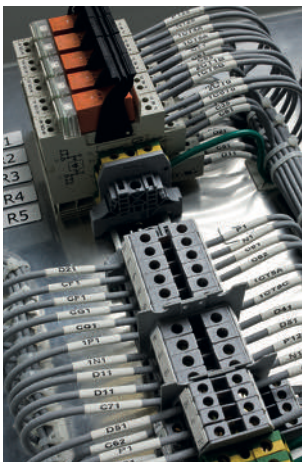




BBP12 Label Printer


www.bradyeurope.com/BBP12




The BBP12 Label Printer is an entry level benchtop label printer for cable, component, product and laboratory sample identification that offers great value for money. The compact BBP12 offers a high print speed of 100 mm/second and can handle a wide range of highly durable and specialised Brady identification labels.

Printer

Article No.	Order Reference
198595	BBP12-EU-U-PWID
195566	BBP12-EU+Unwinder
198600	BBP12-UK-U-PWID
195567	BBP12-UK+Unwinder
198602	BBP12-US-U-PWID
195568	BBP12-US+Unwinder

 The Basic Suite is included with every printer, all you need to do is download it. Workstation.BradyID.com/Free

 Quickly identify your products and wires with customised text or graphical labels, using serialised or imported data. Workstation.BradyID.com/ProductandWire

Accessory

Article No.	Order Reference
361064	BBP12/BBP11 Peel & Present

Printer kits

Article No.	Order Reference
198596	BBP12-LAB Kit-EU
198597	BBP12-LAB Kit-UK
198598	BBP12-LAB Kit-US
198591	BBP12-ELEC Kit-EU
198592	BBP12-ELEC Kit-UK
198593	BBP12-ELEC Kit-US
198588	BBP12-DATA Kit-EU
198589	BBP12-DATA Kit-UK
198590	BBP12-DATA Kit-US

There are a dozen good reasons to choose the compact benchtop entry level BBP12 Label Printer:

1. Compact in size, fits on every desk
2. Default Ethernet Connectivity, allowing you to work in a network
3. Connect any universal keyboard via USB 2.0 to work in stand-alone mode
4. Full colour LCD Display and intuitive software interface are simple to use, so no extensive training is required
5. Simple calibration menu with easy 1-2-3 step printing
6. Prints a wide range of identification labels from 6 mm up to 112 mm wide
7. Standard 300 dpi print quality allowing accurate image & barcode positioning on small labels
8. With its powerful 32 bit processor and its extended memory it can print up to 100 mm / sec
9. The printer supports the industry-standard Zebra® and Eltron® programming languages
10. Print time and date on to your labels via the "Real time clock feature"
11. Best price/quality in the market for low volume printing
12. Comes with a free unwinder accessory to print larger label rolls

PRINTER	
Weight	2.50 kg
Dimensions	Size - Depth: 258 mm Size - Height: 173 mm Size - Width: 202 mm
Max. Print Width (mm)	105.60 mm
Mode of operation	Stand-Alone with external keyboard & Peripheral

DISPLAY	
Display Type	Full colour LCD display
Display Resolution	300 dpi

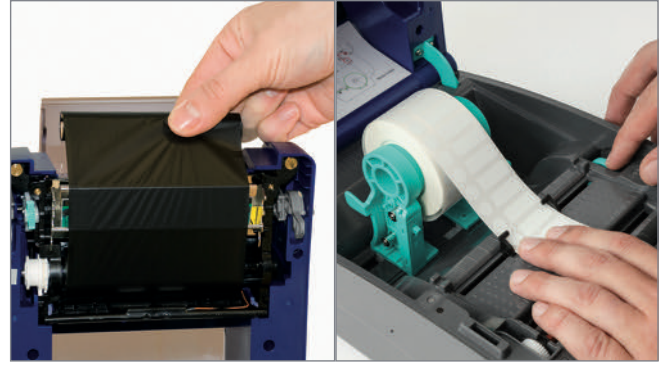
MATERIALS SUPPORTED	
Materials	Nylon Cloth, Paper, Polyester, Polyethylene, Polyimide, Polyolefin (Sleeves), Poly-propylene, Thermoplastic polyether-polyurethane, Vinyl, Vinyl Cloth, Outdoor Vinyl, Self-laminating Vinyl

BARCODES	
Barcode Type	2D and 1D (Linear)

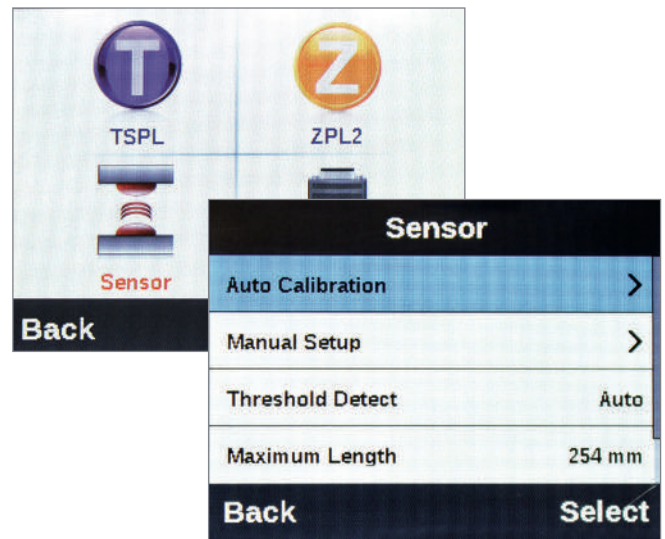
SOFTWARE & CONNECTIVITY	
Connectivity	Serial, USB 2.0, Ethernet
Software Compatibility	Brady Workstation, LabelMark, CodeSoft, Windows® based driver for 3rd party software

COMPLIANCE	
Approval/Compliance	UL; cUL; CE; RoHS; EAC

Ready to print in 1-2-3



Step 1: Insert media



Step 2: Calibrate via Full Colour LCD Display



Step 3: Print



Consult the video of the
BBP12 Label Printer on
www.bradyeurope.com/BBP12

BRADY
WHEN PERFORMANCE MATTERS MOST™