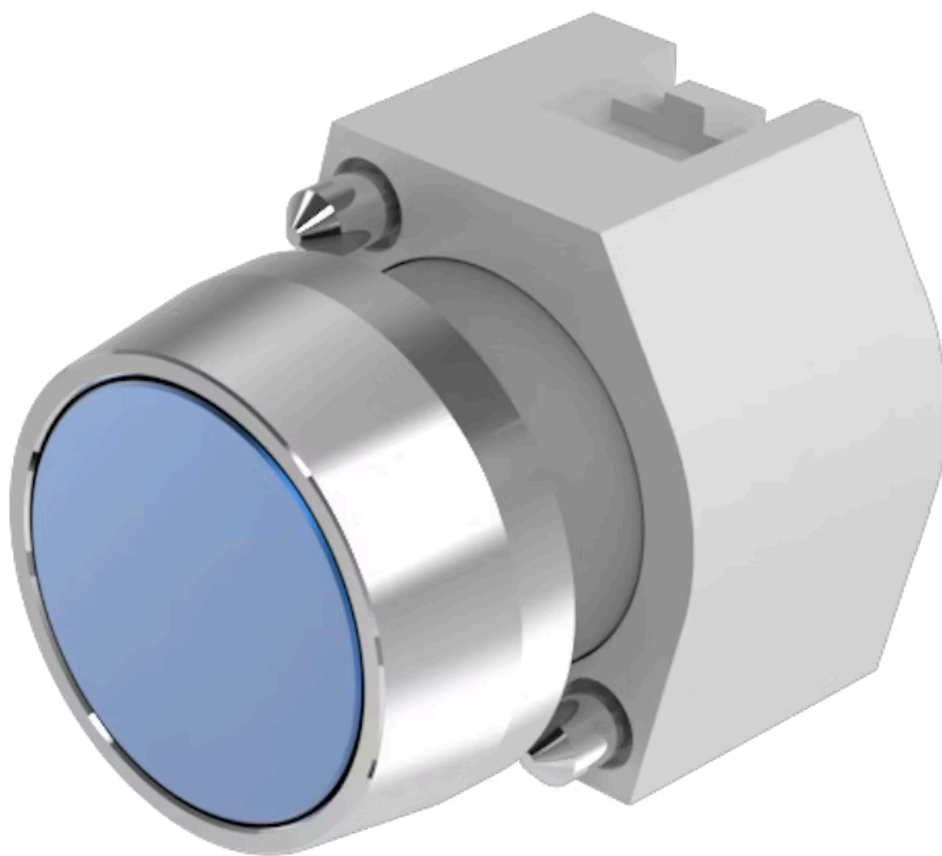


Actuator

704.011.6

Distribution by
Rs-online<https://rs-online.eao.com/p/704.011.6>

Your product:



704.011.6 Actuator

FRONT

| | |
|-----------------------|-----------|
| Front dimension: | Ø 29 mm |
| Front form: | Round |
| Front bezel colour: | Nature |
| Front bezel material: | Aluminium |

MOUNTING

| | |
|----------------|----------------|
| Design: | Raised |
| Mounting type: | Panel mounting |

OPERATING-/INDICATION PART

| | |
|--------------------|-----------------|
| Lens colour: | Blue |
| Lens material: | Aluminium |
| Lens illumination: | Non illuminated |
| Lens shape: | Flush |
| Lens optics: | opaque |

ELECTRICAL CHARACTERISTICS

| | |
|------------|---|
| Standards: | The switches comply with the "Standards for low-voltage switching devices" DIN EN 60947-1 |
|------------|---|

MECHANICAL CHARACTERISTIC

| | |
|----------------------|-----------------------------|
| Switching action: | Momentary |
| Mechanical lifetime: | ≤3 Mil. cycles of operation |

| | |
|--------------------------|---------------------|
| Operating force: | 8 N |
| Operating Travel: | ca. 5.8 mm ± 0.2 mm |
| Weight: | 0.04 kg |

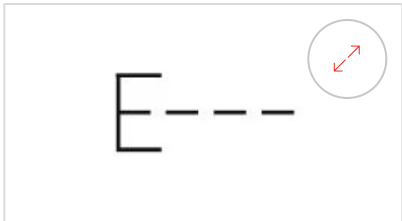
AMBIENT CONDITION

| | |
|-------------------------------|---------------------|
| IP Protection: | IP65 front side |
| Operating temperature: | – 40 °C ... + 55 °C |
| Storage temperature: | – 40 °C ... + 85 °C |

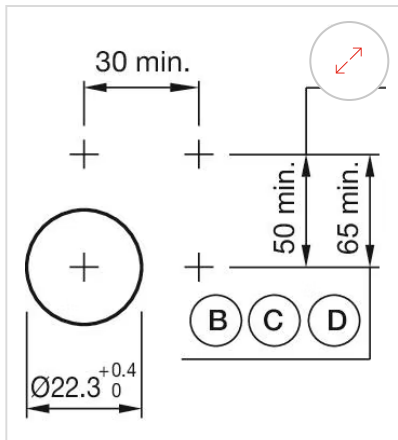
CERTIFICATE

| | |
|---------------|-----------------|
| REACH: | REACH compliant |
| RoHS: | RoHS compliant |

OTHER

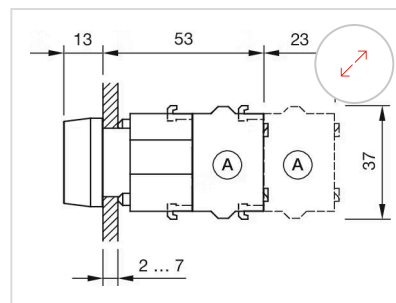
| | |
|---|--|
| Short Description: | Actuator, Ø 29 mm, Flush, Non illuminated, Blue, Aluminium, opaque, Round, Nature, Aluminium, anodised, Momentary |
| Housing colour: | Grey |
| Housing material: | Plastic |
| Product attributes: | Frontring with protective cover to be mounted with a torque of 0.4 Nm onto actuator |
| Hints: | Frontring with protective cover to be mounted with a torque of 0.4 Nm onto actuator, Max. 3 switching elements can be clipped on |
| max. number of switching elements: | 3 |
| Wiring diagrams: |  |

Mounting cut-outs:



A = Screw terminal
 B = Push-in terminal (PIT)
 C = Plug-in terminal 6.3 mm x 0.8 mm
 D = Double plug-in terminal 6.3 mm x 0.8 mm

Dimension drawings:



A = Screw terminal