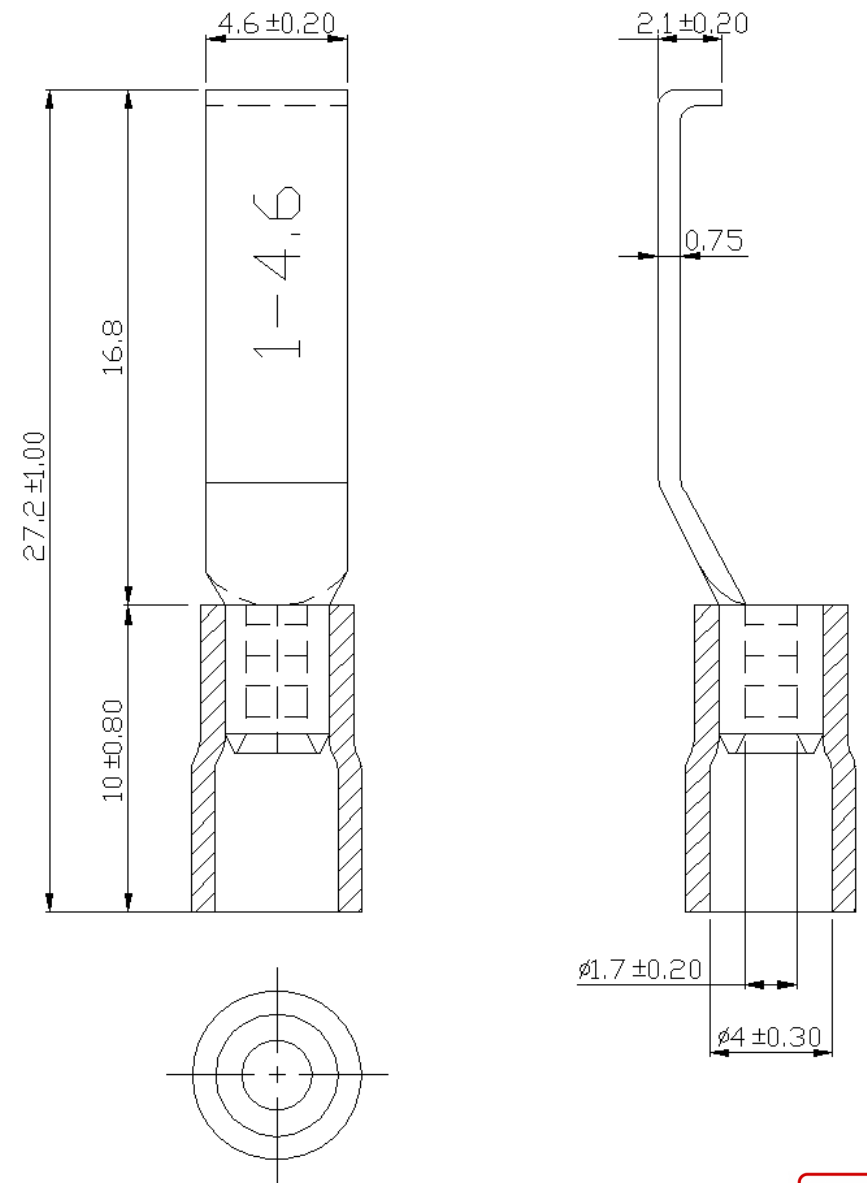


A B C D E F G H

REV	DESCRIPTION	DATE
-----	-------------	------



- NOTE :
1. MAXIMUM ELECTRIC CURRENT : 

A.W.G.	22	20	18	16
AMP.	9	12	17	18
  2. MAXMUM ELECTRICAL RATING : 75°C 600 VOLTS MAX.
  3. INSULATION MATERIAL : VINYL
  4. INSULATION COLOR : RED
  5. TERMINAL MATERIAL : COPPER
  6. WIRE RANGE : 22-16 A.W.G. ( 0.5-1.5 mm<sup>2</sup> )
  7. ERMINALS SURFACE TREATMENT : TIN PLATED

Tolerance Unless Otherwise Specified	
0 > 6 mm ± 0.20	ANGLE
6 > 18 mm ± 0.30	0° REF ±
18 > 30 mm ± 0.40	° ±
30 > 75 mm ± 0.50	° ±



NAME	VINYL-INSULATED LIPPED BLADE TERMINALS			UNIT	mm	
PART NO.	LBV1-4.6@	MATERIAL	-----	APPROVE	张馨尹	
NUMBER	KA-95132-C	SCALE	SHEET PAGE	CHECKED	林祥远	
DATE	2006/03/24	4/1	1-0 20F2	DRAWN	张馨尹	

A B C D E F G H