



Part Number : [190040009](#)

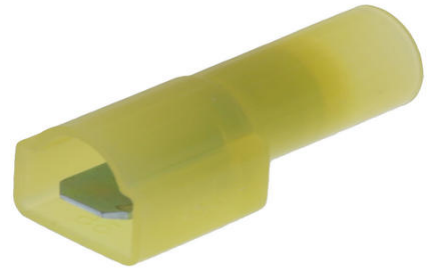
Product Description : InsulKrimp Fully Insulated Coupler, Male, for 12-10 AWG Wire, Box

Series Number : 19004

Status : Active

Product Category : Quick Disconnects

Engineering Number : C-2264



Documents & Resources

Drawings

[190040009_sd.pdf](#)

3D Models and Design Files

[STEP AP242](#)

[SOLIDWORKS](#)

[Creo](#)


Specifications

[PS-19902-008-001.pdf](#)

[PS-19902-013-001.pdf](#)

Product Environment Compliance

Compliance

GADSL/IMDS	Not Relevant
China RoHS	 per SJ/T 11365-2006
EU ELV	Not Relevant
Low-Halogen Status	Low-Halogen per IEC 61249-2-21
REACH SVHC	Contains Melamine per D(2025)4165-DC (25 June 2025)
EU RoHS	Compliant per EU 2015/863

Compliance Statements

- EU RoHS
- REACH SVHC

- Low-Halogen

Industry Documents

- IPC 1752A Class C
- IPC 1752A Class D
- Molex Product Compliance Declaration
- IEC-62474
- chemSHERPA (xml)

Substances of Interest

- PFAS

EU RoHS Certificate of Compliance

Additional Product Compliance Information

Part Details

General

Status	Active
Category	Quick Disconnects
Series	19004
Description	InsulKrimp Fully Insulated Coupler, Male, for 12-10 AWG Wire, Box
Product Name	InsulKrimp
Type	Standard Quick Disconnect
UPC	800753030138

Agency

CSA	LR18689
UL	E79133

Electrical

Voltage - Maximum	600V
-------------------	------

Physical

Barrel Type	Closed
Color - Resin	Yellow
Flammability	94V-2
Gender	Male
Glow-Wire Capable	No

Insulated	Fully
Insulation	Nylon (PA)
Lock to Mating Part	None
Material - Metal	Brass
Material - Plating Mating	Zinc Chromate
Material - Plating Termination	Zinc Chromate
Material - Resin	Nylon
Net Weight	1.978/g
Orientation	Straight
Packaging Type	Bag
Polarized to Mating Part	No
Tab Thickness	0.81mm
Tab Width	6.35mm
Temperature Range - Operating	-65° to +105°C
Wire Insulation Diameter	6.99mm max.
Wire Size (AWG)	10, 12

Solder Process Data

Lead-Free Process Capability	N/A
------------------------------	-----

Mates With / Use With

Use with Part(s)

Description	Part Number
InsulKrimp Fully Insulated Coupler, Female, for 12-10 AWG Wire, Box	<u>190050010</u>
InsulKrimp Fully Insulated Coupler, Female, for 12-10 AWG Wire, Continuous Molded Strip	<u>190050014</u>
InsulKrimp Fully Insulated Coupler, Female, for 12-10 AWG Wire, Mylar Tape	<u>190050015</u>

Application Tooling

Global

Description	Part Number
Hand Crimp Tool	<u>640015100</u>
Crimp Head for the AT-200 Pneumatic Hand Tool	<u>640055100</u>

This document was generated on Nov 05, 2025