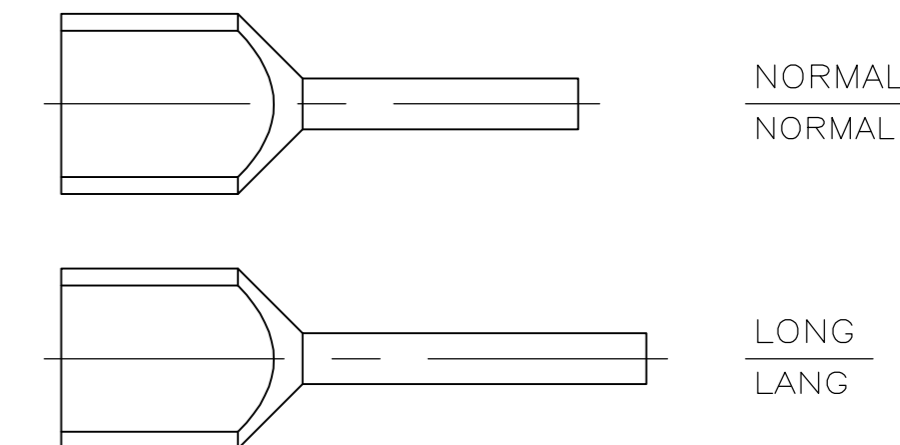
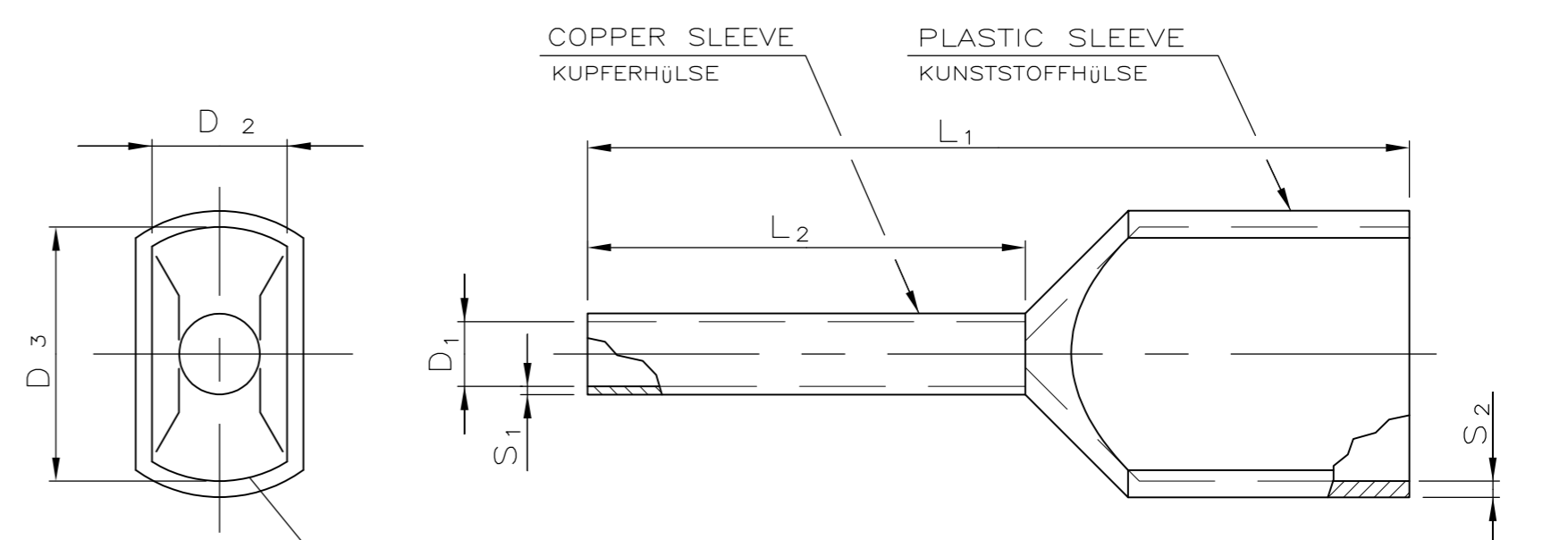


THIS DRAWING IS UNPUBLISHED.
 VERTRÄULICHE UNVERÖFFENTLICHTE ZEICHNUNG
 © COPYRIGHT BY TYCO ELECTRONICS CORPORATION. ALL RIGHTS RESERVED.
 FREI FÜR VERÖFFENTLICHUNG
 ALLE INTERNATIONALE RECHTE RESERVIERT.
 ALLE RECHTE VORBEHALTEN

LOC	DIST	REVISIONS					
		P	LTR	DESCRIPTION	DATE	DWN	APVD
AI	-		B1	NOTE 3 U. 4, FARBREIHE U. EINZELTOLERANZEN HINZU, D1 KORRIGIERT	06.03.98	SCHDT	G.F
			B2	REV.PER EG00-2782-00:REV.PER EG00-2782-00:	29.11.00	S.STZ	G.F
			B3	REVISED PER ECR-09-018681	20AUG09	VKH	RRP

ORDER NO. BESTELL-NR.	CROSS-SECTION QUERSCHNITT		STRIP LENGTH ABISOLIER-LÄNGE	TYPE AUSFÜHRUNG	COLOUR FARBE	L1 /mm	L2 /mm	D1 /mm	S1 /mm	S2 /mm	D2 /mm	D3 /mm	COLOUR TYPE FARB- REIHE	PACKING UNIT VERPACKUNGS- EINHEIT
	mm ²	AWG												
966 144-1	2x0.50	2x20	11	NORMAL	WHITE	15.0 ±1.5	8.00 ±0.6	1.40 +0.14	0.15 ±0.05	0.25 ±0.10	2.50 ±0.2	4.70 ±0.4	1/DIN	500
966 144-2	2x0.75	2x18	11	NORMAL	GREY	15.0 ±1.5	8.00 ±0.6	1.70 +0.25	0.15 ±0.05	0.25 ±0.10	2.80 ±0.2	5.00 ±0.4	DIN	500
966 144-3	2x0.75	2x18	13	LONG	GREY	17.0 ±1.5	10.0 ±0.6	1.70 +0.25	0.15 ±0.05	0.25 ±0.10	2.80 ±0.2	5.00 ±0.4	DIN	500
966 144-4	2x1.00	2x17	11	NORMAL	RED	15.0 ±1.5	8.00 ±0.6	1.95 +0.25	0.15 ±0.05	0.30 ±0.10	3.40 ±0.2	5.40 ±0.4	1/DIN	500
966 144-5	2x1.00	2x17	13	LONG	RED	17.0 ±1.5	10.0 ±0.6	1.95 +0.25	0.15 ±0.05	0.30 ±0.10	3.40 ±0.2	5.40 ±0.4	1/DIN	500
966 144-6	2x1.50	2x16	12	NORMAL	BLACK	16.0 ±1.5	8.00 ±0.6	2.20 +0.25	0.15 ±0.05	0.30 ±0.10	3.60 ±0.2	6.60 ±0.4	1/DIN	500
966 144-7	2x1.50	2x16	16	LONG	BLACK	20.0 ±1.5	12.0 ±0.6	2.20 +0.25	0.15 ±0.05	0.30 ±0.10	3.60 ±0.2	6.60 ±0.4	1/DIN	500
966 144-8	2x2.50	2x14	14	NORMAL	BLUE	18.5 ±1.5	10.0 ±0.6	2.80 +0.25	0.20 ±0.05	0.30 ±0.10	4.20 ±0.2	7.80 ±0.4	2/DIN	250
966 144-9	2x2.50	2x14	17	LONG	BLUE	21.5 ±2.0	13.0 ±0.6	2.80 +0.25	0.20 ±0.05	0.30 ±0.10	4.20 ±0.2	7.80 ±0.4	2/DIN	250
1-966 144-0	2x4.00	2x11	17	NORMAL	GREY	23.0 ±2.0	12.0 ±0.6	3.70 +0.30	0.20 ±0.05	0.40 ±0.15	4.90 ±0.4	8.80 ±0.4	2/DIN	100
1-966 144-1	2x6.00	2x10	19	NORMAL	YELLOW	26.0 ±2.0	14.0 ±0.6	4.80 +0.30	0.20 ±0.05	0.40 ±0.15	6.90 ±0.4	10.0 ±0.4	DIN	100
1-966 144-2	2x10.0	2x7	20	NORMAL	RED	26.0 ±2.0	14.0 ±0.6	6.40 +0.40	0.20 ±0.05	0.40 ±0.15	7.20 ±0.4	13.0 ±0.5	DIN	100
1-966 144-3	2x16.0	2x5	21	NORMAL	BLUE	30.0 ±2.0	14.0 ±0.6	8.20 +0.40	0.20 ±0.05	0.40 ±0.15	9.60 ±0.4	18.4 ±1.0	DIN	50
1-966 144-4	2x0.5	2x20	11	NORMAL	ORANGE	15.0 ±1.5	8.00 ±0.6	1.40 +0.14	0.15 ±0.05	0.25 ±0.10	2.50 ±0.2	4.70 ±0.4	2	500
1-966 144-5	2x0.75	2x18	11	NORMAL	BLUE	15.0 ±1.5	8.00 ±0.6	1.70 +0.25	0.15 ±0.05	0.25 ±0.10	2.80 ±0.2	5.00 ±0.4	1	500
1-966 144-6	2x0.75	2x18	11	NORMAL	WHITE	15.0 ±1.5	8.00 ±0.6	1.70 +0.25	0.15 ±0.05	0.25 ±0.10	2.80 ±0.2	5.00 ±0.4	2	500
1-966 144-7	2x0.75	2x18	13	LONG	BLUE	17.0 ±1.5	10.0 ±0.6	1.70 +0.25	0.15 ±0.05	0.25 ±0.10	2.80 ±0.2	5.00 ±0.4	1	500
1-966 144-8	2x0.75	2x18	13	LONG	WHITE	17.0 ±1.5	10.0 ±0.6	1.70 +0.25	0.15 ±0.05	0.25 ±0.10	2.80 ±0.2	5.00 ±0.4	2	500
1-966 144-9	2x1.00	2x17	11	NORMAL	YELLOW	15.0 ±1.5	8.00 ±0.6	1.95 +0.25	0.15 ±0.05	0.30 ±0.10	3.40 ±0.2	5.40 ±0.4	2	500
2-966 144-0	2x1.00	2x17	13	LONG	YELLOW	17.0 ±1.5	10.0 ±0.6	1.95 +0.25	0.15 ±0.05	0.30 ±0.10	3.40 ±0.2	5.40 ±0.4	2	500
2-966 144-1	2x1.50	2x16	12	NORMAL	RED	16.0 ±1.5	8.00 ±0.6	2.20 +0.25	0.15 ±0.05	0.30 ±0.10	3.60 ±0.2	6.60 ±0.4	2	500
2-966 144-2	2x1.50	2x16	16	LONG	RED	20.0 ±1.5	12.0 ±0.6	2.20 +0.25	0.15 ±0.05	0.30 ±0.10	3.60 ±0.2	6.60 ±0.4	2	500
2-966 144-3	2x2.50	2x14	14	NORMAL	GREY	18.5 ±1.5	10.0 ±0.6	2.80 +0.25	0.20 ±0.05	0.30 ±0.10	4.20 ±0.2	7.80 ±0.4	1	250
2-966 144-4	2x2.50	2x14	17	LONG	GREY	21.5 ±2.0	13.0 ±0.6	2.80 +0.25	0.20 ±0.05	0.30 ±0.10	4.20 ±0.2	7.80 ±0.4	1	250
2-966 144-5	2x4.00	2x11	17	NORMAL	ORANGE	23.0 ±2.0	12.0 ±0.6	3.70 +0.30	0.20 ±0.05	0.40 ±0.15	4.90 ±0.4	8.80 ±0.4	1	100
2-966 144-6	2x6.00	2x10	19	NORMAL	GREEN	26.0 ±2.0	14.0 ±0.6	4.80 +0.30	0.20 ±0.05	0.40 ±0.15	6.90 ±0.4	10.0 ±0.4	1	100
2-966 144-7	2x6.00	2x10	19	NORMAL	BLACK	26.0 ±2.0	14.0 ±0.6	4.80 +0.30	0.20 ±0.05	0.40 ±0.15	6.90 ±0.4	10.0 ±0.4	2	100
2-966 144-8	2x10.0	2x7	20	NORMAL	BROWN	26.0 ±2.0	14.0 ±0.6	6.40 +0.40	0.20 ±0.05	0.40 ±0.15	7.20 ±0.4	13.0 ±0.5	1	100
2-966 144-9	2x10.0	2x7	20	NORMAL	IVORY	26.0 ±2.0	14.0 ±0.6	6.40 +0.40	0.20 ±0.05	0.40 ±0.15	7.20 ±0.4	13.0 ±0.5	2	100
3-966 144-0	2x16.0	2x5	21	NORMAL	IVORY	30.0 ±2.0	14.0 ±0.6	8.20 +0.40	0.20 ±0.05	0.40 ±0.15	9.60 ±0.4	18.4 ±1.0	1	50
3-966 144-1	2x16.0	2x5	21	NORMAL	GREEN	30.0 ±2.0	14.0 ±0.6	8.20 +0.40	0.20 ±0.05	0.40 ±0.15	9.60 ±0.4	18.4 ±1.0	2	50



- 1 THE AWG CROSS-SECTION CAN DIFFER SLIGHTLY TO THE DIN-STANDARD CROSS-SECTION VALUES.
 - 2 RECOMMENDED STRIP LENGTH
 - 3 TUBULAR END-SLEEVES PACKED INTO PLASTIC BAG
 - 4 COLOUR TYPE 1: COLOURS PER TELEMECANIQUE STANDARD
COLOUR TYPE 2: COLOURS PER WEIDM ÜLLER STANDARD
COLOUR TYPE DIN: COLOURS PER DIN 46228 PART 4
 - 5 MAX.INSULATION DIA. OF WIRE: 0.5xD₃ MIN.-0.1
- 1 DER AWG-QUERSCHNITT KANN VON DEN DIN-NORM QUERSCHNITTSWERTEN GERINGFÜGIG ABWEICHEN.
 - 2 EMPFOHLENE ABISOLIERLÄNGE
 - 3 ADERENDHÜLSEN IN PLASTIKBEUTEL VERPACKT
 - 4 FARBREIHE 1: FARBEN NACH TELEMECANIQUE STANDARD
FARBREIHE 2: FARBEN NACH WEIDM ÜLLER STANDARD
FARBREIHE DIN: FARBEN NACH DIN 46228 TEIL 4
 - 5 MAX.ISOLATIONS-Ø DER LEITUNG: 0.5xD₃ MIN.-0.1
6. USE HAND TOOL 539660-1
6. BENUTZEN SIE HANDWERKZEUG 539660-1

THIS DRAWING IS A CONTROLLED DOCUMENT. DIESE ZEICHNUNG IST EIN KONTROLLIERTES DOKUMENT.		DWN 22-FEB-93 R.SCHMIDT	Tyco Electronics AMP GmbH D - 64625 Bensheim	
DIMENSIONS: MASSE/WEITEN: mm		CHK 02-MAR-93 W.BÖCK	NAME	
TOLERANCES UNLESS OTHERWISE SPECIFIED: ALLGEMEINTOLERANZEN		APVD 29-NOV-00 G.FELDMEIER	DOUBLE CONDUCTOR TUBULAR END-SLEEVE WITH PLASTIC SLEEVE DOPPELLEITER ADERENDHÜLSE MIT KUNSTSTOFFHÜLSE	
MATERIAL PP/E-Cu		FINISH/OBERFL.: S _n COLOUR: SEE TABLE FARBE: SIEHE TABELLE	WEIGHT GEWICHT -	RESTRICTED TO NUR FÜR -
CUSTOMER DRAWING /KUNDENZEICHNUNG		SCALE MASSSTAB -	SHEET 1 OF 1 BLATT VON 1	REV B3