



rspro.com

SPILL CONTROL

RANGE GUIDE



RS PRO Introduction to Spill Control

Effective spill control is essential to any organisation's commitment to health and safety, risk management, and environmental responsibility. It encompasses a wide range of products and practices that are designed to contain, manage, and clean up liquid spills, whether from machinery, storage systems, or unexpected leaks.

Uncontrolled spills pose serious risks: from workplace injuries and operational disruption to regulatory non-compliance and environmental damage. Notably, slips and trips remain one of the leading causes of workplace accidents globally, highlighting the need for robust preventative measures.

In many regions, including the UK, legislation requires employers to implement appropriate spill control solutions as part of their duty of care. This guide has been created to equip you with the knowledge and tools needed to confidently specify and promote spill control. Whether for warehousing, manufacturing, logistics, or maintenance, this guide will help ensure your customers meet their compliance obligations while supporting a safer, cleaner, and more sustainable working environment.

RS PRO SPILL CONTROL RANGE



Absorbents

[GO TO PAGE 3 »](#)



Spill Containment

[GO TO PAGE 11 »](#)



Spill Kits

[GO TO PAGE 13 »](#)



Drain Protection

[GO TO PAGE 19 »](#)



Granules

[GO TO PAGE 20 »](#)

Understanding Absorbent Applications

Buy this and more at rspro.com



Selecting the right absorbent is essential for effective spill control. The type of absorbent used should match the nature of the liquid being managed to ensure maximum safety and performance. Below is a guide to the three main absorbent types: Maintenance, Oil-Only, and Chemical. All absorbents are available in a range of formats: Pads, Rolls, Socks, Pillows, and a wide selection of Spill Kits.

MAINTENANCE ABSORBENTS



Versatile Solutions for Everyday Spills

- Designed for general-purpose use in industrial environments where a wide variety of liquids may be present.
- Typically dark grey or black in colour, made from meltblown polypropylene and other absorbent materials.
- Suitable for all fluid types, including water-based liquids, oils, oil-based fluids, and non-aggressive chemicals.
- The most versatile absorbent type, capable of handling the vast majority of spills in maintenance and operational settings.

OIL-ONLY ABSORBENTS



Targeted Control for Oil and Hydrocarbons

- Specifically designed for the clean-up of oil and hydrocarbon-based spills.
- Typically white for easy identification and distinction from other absorbent types.
- Manufactured for use in challenging environments with heavy oil presence.
- Hydrophobic properties ensure these absorbents repel water, making them ideal for outdoor use or any situation where water must be excluded.
- Remain buoyant even when fully saturated with oil, enabling easy retrieval and disposal.

CHEMICAL ABSORBENTS



Specialist Protection for Hazardous Liquids

- Engineered for use with aggressive chemicals, including acids, alkalis, solvents, and other hazardous substances.
- Always yellow for high visibility and clear identification of chemical-specific use.
- Suitable for use in chemical processing areas, laboratories, and any environment dealing with corrosive or hazardous liquids.
- Can also be used for general water-based spills if required.

Understanding Absorbent Types

Buy this and more at rspro.com



Choosing the right absorbent format is key to effective spill control. Each type plays a distinct role in containing and cleaning up spills - whether in routine maintenance or emergency situations. The following guide outlines the most commonly used absorbent types and their applications.

PADS



Quick Response for Everyday Spills

- Ideal for small to medium spills in general maintenance and operational areas.
- Can be layered or used individually depending on the size and severity of the spill.
- Lightweight, easy to deploy, and suitable for routine spill management.

ROLLS



Flexible Coverage for Larger Surface Areas

- Similar to pads but in continuous roll format for greater adaptability.
- Tear off the required length for the job, ideal for walkways, workbenches, or wide spill zones.
- A cost-effective option for both high and low-volume usage.

SOCKS



Perimeter Control and Spill Containment

- Designed to surround, contain, and direct liquid spills.
- Prevents spread across floors or into drains and sensitive equipment.
- Essential for managing flowing liquids or creating spill boundaries.

PILLOWS



Targeted Absorption for Larger or Localised Spills

- High-capacity absorbents designed to capture and hold larger volumes of liquid.
- Ideal for placing under leaking machinery, drums, valves, or containers.
- Compact and versatile, can be used in tight spaces or for vertical drip applications.

BOOMS



Heavy-Duty Containment for Large-Scale Spills

- Designed for major spills and outdoor use, especially in marine or industrial environments.
- Floats on water and absorbs oil-based liquids while repelling water (in oil-only variants).
- Equipped with a protective net to secure contents, integrated clips for connecting multiple booms into extended sections, and recovery loops for easy retrieval.

PRO TIP

Use absorbent types in combination for maximum effectiveness. Pads, Rolls, Socks, Pillows, and Booms each serve a purpose, used individually or together to adapt to the size, location, and type of spill, ensuring fast, efficient, and safe containment every time.

Understanding Absorbent Constructions

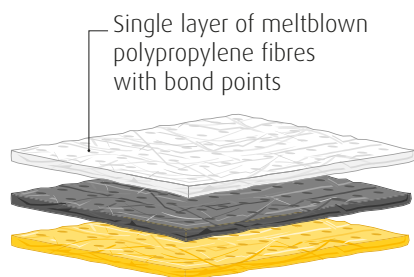
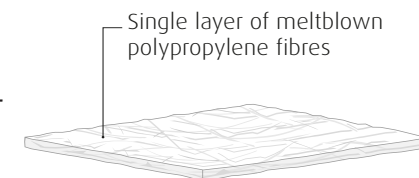
Buy this and more at rspro.com



Our absorbent pads and rolls are available in a range of construction types and weights. How an absorbent is constructed will affect its durability, wicking performance (the rate at which fluid is drawn up in to the absorbent) and also its slip-resistance if being used as a floor covering.

UNBONDED

Unbonded meltblown is made by simply melting a polypropylene resin, then blowing the resulting very fine fibres to form a continuous mat. The desired weight is accumulated in a single pass, and is then cut into pads or rolls. Unbonded absorbents offer fast absorption but limited durability, these absorbents are not perforated. Unbonded meltblown is only available in an Oil Only format.

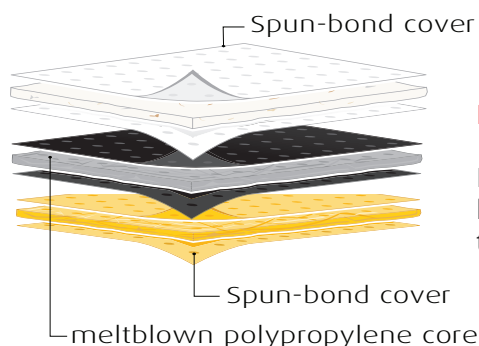


BONDED

Bonded is made just like unbonded but in addition is passed through sonic heads. These sonic bond points fuse the fibres together at small points, (the area covered by these bond points is approximately 5% of the pad so it offers some effective lint control). This process makes the absorbent a little stronger, but from an economic view point it can often be better to choose a single laminated version instead.

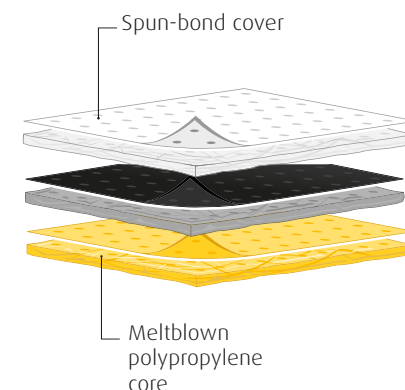
SINGLE LAMINATED

Single laminated consists of a thin layer of 'no-lint' spun-bond material sonically attached to the top surface of the meltblown core. This greatly reduces linting (fibres detaching easily) and improves strength. When used in roll format, it offers a significant advantage of being less slippery underfoot when the meltblown core is placed face down.



DOUBLE LAMINATED

Double laminated meltblown absorbents consist of a meltblown polypropylene core sandwiched between two layers of spun-bond 'no-lint' material. Both the top and bottom layers are sonically bonded to the core, significantly enhancing durability, tear resistance, and lint control.





RS PRO Spill Absorbent Pad for Maintenance Use

Article	Construction	Dimensions	Qty	Absorbency
771-6392	Light Weight, Single Lam	38cm x 48cm	20	18L
360-124	Light Weight, Single Lam	50cm x 40cm	50	30L
360-120	Light Weight, Single Lam	50cm x 40cm	100	60L
771-6373	Light Weight, Single Lam	38cm x 48cm	100	90L
147-179	Light Weight, Single Lam	38cm x 48cm	200	120L
872-5716	Heavy Weight, Single Lam	38cm x 48cm	20	20L
771-6440	Heavy Weight, Single Lam	56cm Diameter	5	5L
360-115	Heavy Weight, Single Lam	56cm Diameter	25	25L
187-4698	Heavy Weight, Single Lam	50cm x 40cm	100	100L
187-4709	Heavy Weight, Single Lam	50cm x 40cm	100	100L
771-6389	Heavy Weight, Single Lam	38cm x 48cm	100	110L



RS PRO Spill Absorbent Pad for Oil-Only Use

Article	Construction	Dimensions	Qty	Absorbency
771-6395	Light Weight, Single Lam	38cm x 48cm	20	18L
360-121	Light Weight, Single Lam	50cm x 40cm	50	30L
360-117	Light Weight, Single Lam	50cm x 48cm	100	60L
771-6377	Light Weight, Single Lam	38cm x 48cm	100	90L
187-4691	Light Weight, Unbonded	50cm x 40cm	200	120L
147-181	Light Weight, Single Lam	38cm x 48cm	200	120L
872-5722	Heavy Weight, Single Lam	38cm x 48cm	20	20L
360-114	Heavy Weight, Single Lam	56cm Diameter	25	25L
771-6383	Heavy Weight, Single Lam	38cm x 48cm	100	100L
187-4711	Heavy Weight, Single Lam	50cm x 40cm	100	100L
187-4704	Heavy Weight, Unbonded	50cm x 40cm	100	120L
187-4686	Extra Heavy Weight, Single Lam	50cm x 40cm	100	120L



RS PRO Spill Absorbent Pad for Chemical Use

Article	Construction	Dimensions	Qty	Absorbency
771-6399	Light Weight, Single Lam	38cm x 48cm	20	18L
360-123	Light Weight, Single Lam	50cm x 40cm	50	30L
187-4696	Light Weight, Double Lam	50cm x 40cm	100	60L
360-118	Light Weight, Single Lam	50cm x 40cm	100	60L
771-6386	Light Weight, Single Lam	38cm x 48cm	100	100L
147-177	Light Weight, Single Lam	38cm x 48cm	200	120L
872-5744	Heavy Weight, Single Lam	38cm x 48cm	20	16L
187-4710	Heavy Weight, Single Lam	50cm x 40cm	100	100L
872-5741	Heavy Weight, Single Lam	38cm x 48cm	100	110L



RS PRO Spill Absorbent Roll for Maintenance Use

Article	Construction	Dimensions	Capacity
187-4700	Heavy Weight, Single Lam	38cm x 22m	42L
872-5704	Light Weight, Single Lam	48cm x 40m	80L
872-5713	Light Weight, Single Lam	90cm x 40m	144L
187-4712	Medium Weight, Single Lam	50cm x 40m	80L
872-5710	Heavy Weight, Single Lam	48cm x 40m	100L
872-5729	Heavy Weight, Single Lam	90cm x 40m	180L
187-4687	Heavy Weight, Double Lam	38cm x 46m	70L
771-6434	Heavy Weight, Single Lam	38cm x 46m	85L



RS PRO Spill Absorbent Roll for Oil-Only Use

Article	Construction	Dimensions	Capacity
771-6402	Light Weight, Single Lam	48cm x 40m	80L
187-4713	Medium Weight, Single Lam	50cm x 40m	80L
872-5726	Heavy Weight, Single Lam	48cm x 40m	100L
872-5735	Heavy Weight, Single Lam	90cm x 40cm	180L
187-4708	Extra Heavy Weight, Single Lam	50cm x 40m	120L



RS PRO Spill Absorbent Roll for Chemical Use

Article	Weight	Dimensions	Capacity
872-5738	Light Weight, Single Lam	48cm x 40m	80L
872-5732	Light Weight, Single Lam	90cm x 40m	144L
187-4697	Light Weight, Double Lam	50cm x 40m	69L
872-5748	Heavy Weight, Single Lam	48cm x 40m	100L



RS PRO Spill Absorbent Socks for Maintenance Use

Article	Construction	Dimensions	Qty	Absorbency
771-6412	Cotton	7.5cm x 1.2m	10	40L
771-6406	Cotton	7.5cm x 1.2m	20	80L
360-136	Spunbond	7.5cm x 1.2m	5	20L
360-132	Spunbond	7.5cm x 1.2m	20	80L
360-127	Spunbond	7.5cm x 3m	8	80L



RS PRO Spill Absorbent Socks for Oil-Only Use

Article	Construction	Dimensions	Qty	Absorbency
771-6421	Cotton	7.5cm x 1.2m	10	40L
771-6415	Cotton	7.5cm x 1.2m	20	80L
360-137	Spunbond	7.5cm x 1.2m	5	20L
360-133	Spunbond	7.5cm x 1.2m	20	80L
360-128	Spunbond	7.5cm x 3m	8	80L



RS PRO Spill Absorbent Socks for Chemical Use

Article	Construction	Dimensions	Qty	Absorbency
771-6424	Cotton	7.5cm x 1.2m	10	40L
771-6418	Cotton	7.5cm x 1.2m	20	80L
360-134	Spunbond	7.5cm x 1.2m	5	20L
360-130	Spunbond	7.5cm x 1.2m	20	80L
360-126	Spunbond	7.5cm x 3m	8	80L



RS PRO Spill Absorbent Pillows for Maintenance Use

Article	Construction	Dimensions	Qty	Absorbency
360-140	Spunbond	50cm x 40cm	8	30L
771-6428	Spunbond	38cm x 23cm	8	48L
187-4689	Spunbond	38cm x 23cm	16	60L



RS PRO Spill Absorbent Pillows for Oil-Only Use

Article	Construction	Dimensions	Qty	Absorbency
360-142	Spunbond	50cm x 40cm	8	30L
771-6437	Spunbond	38cm x 23cm	8	48L
187-4702	Spunbond	38cm x 23cm	16	60L



RS PRO Spill Absorbent Pillows for Chemical Use

Article	Construction	Dimensions	Qty	Absorbency
360-139	Spunbond	50cm x 40cm	8	30L
771-6430	Spunbond	38cm x 23cm	8	48L
187-4695	Spunbond	38cm x 23cm	16	60L



RS PRO Spill Absorbent Booms for Maintenance Use

Article	Construction	Dimensions	Qty	Absorbency
360-146	Spunbond	13cm x 3m	2	85L



RS PRO Spill Absorbent Booms for Oil-Only Use

Article	Construction	Dimensions	Qty	Absorbency
360-145	Spunbond	13cm x 3m	2	85L
360-143	Spunbond & Net	20cm x 46cm	5	75L
193-8434	Spunbond & Net	13cm x 3m	4	151L
193-8433	Spunbond & Net	20cm x 3m	4	204L



RS PRO Spill Absorbent Booms for Chemical Use

Article	Construction	Dimensions	Qty	Absorbency
360-148	Spunbond	13cm x 3m	2	85L
193-8427	Spunbond & Net	13cm x 3m	4	120L

In addition to absorbents, a comprehensive spill control strategy includes the use of containment equipment to proactively manage risk. These products are essential for preventing leaks and spills from reaching the environment, improving workplace safety, and supporting regulatory compliance.

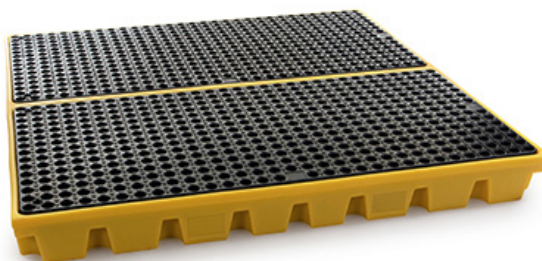
SPILL TRAYS



Compact Containment for Small Containers and Equipment

- A wide range of tray sizes and types designed for use under small containers, tools, and machinery.
- Ideal for catching drips, leaks, and minor spills at the source.
- Useful in workshops, laboratories, maintenance areas, and storage rooms.
- Helps prevent contamination of floors and surfaces while simplifying clean-up.

DRUM BUNDING



Robust Containment for 205L (Oil) Drums and Barrels

- Includes banded pallets, low-profile work floors, and containment trays specifically designed for standard drums.
- Protects against leaks, overfills, and accidental spills during handling or storage.
- Suitable for both indoor and outdoor use in warehouses, loading bays, or chemical storage areas.
- Supports safe, compliant storage in line with environmental and safety regulations.

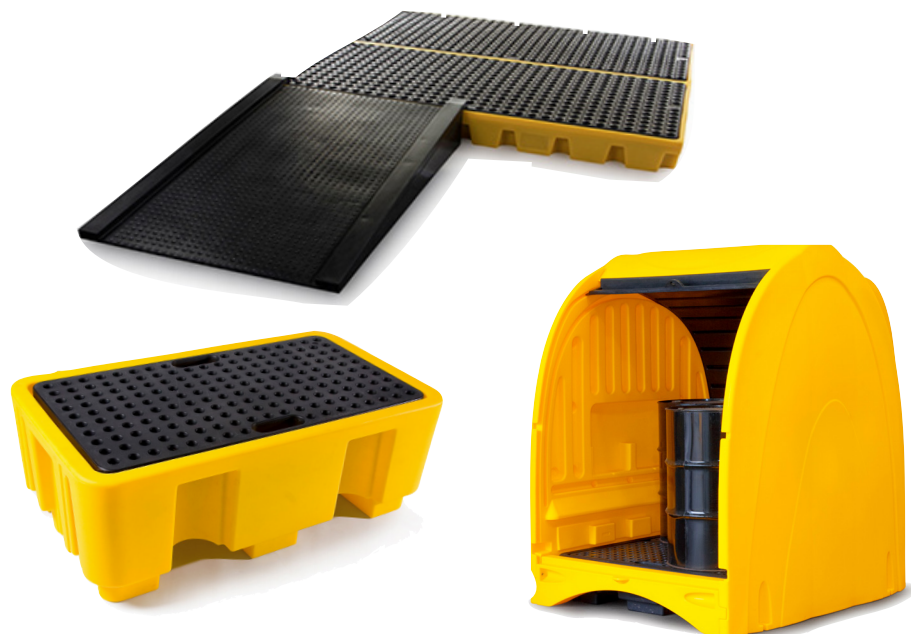
IBC BUNDING



High-Capacity Containment for Intermediate Bulk Containers (IBCs)

- Designed to contain spills from IBCs and other large-volume storage tanks.
- Includes banded pallets and platforms that meet secondary containment requirements.
- Prevents uncontrolled release of hazardous or polluting liquids.
- A critical solution for bulk liquid handling in industrial, agricultural, and processing environments.

Investing in the right spill containment equipment not only protects people and property, but it also helps organisations remain compliant with environmental legislation and reduces the cost of clean-up and fines.



RS PRO Pallets, Platforms & Ramps

Article	Sump Capacity	Max Load Capacity	Description
360-076	230L	400kg	1-Drum Polyethylene Spill Pallet
360-081	205L	-	Drum Funnel & Lid
177-2745	112L	1000kg	2-Drum Polyethylene Spill Platform
177-2743	250L	650kg	2-Drum Polyethylene Spill Pallet
177-2741	1130L	4000kg	Polyethylene Double IBC Spill Pallet
177-2742	250L	1250kg	4-Drum Polyethylene Spill Pallet
177-2744	232L	2000kg	4-Drum Polyethylene Spill Platform
893-0350	N/A	250kg	Workfloor Ramp
360-077	N/A	250kg	Modular Ramp to suit 4-Drum Spill Pallet
360-079	N/A	250kg	Modular Ramp to suit 2-Drum Spill Pallet
694-327	1120L	2000kg	Single IBC Spill Pallet with Grating
694-329	1100L	2000kg	Single IBC Spill Pallet with Dispensing Well

Secondary Containment

Buy this and more at rspro.com



RS PRO Spill Tray

Article	Sump Capacity	Description	Dimensions
360-081	-	Poly Drum Funnel & lid to suit 205L Drum	62cm x 62cm x 26.5cm
893-0362	20L	Polyethylene 20L Spill Tray	60cm x 40cm x 15.5cm
893-0369	20L	Polyethylene 20L Spill Tray with Grate	60cm x 40cm x 15.5cm
893-0375	30L	Polyethylene 30L Spill Tray	80.5cm x 40.5cm x 15.5cm
893-0366	30L	Polyethylene 30L Spill Tray with Grate	80.5cm x 40.5cm x 15.5cm
893-0372	40L	Polyethylene 40L Spill Tray	80cm x 60cm x 15.5cm
893-0378	40L	Polyethylene 40L Spill Tray with Grate	80cm x 60cm x 15.5cm
771-6544	50L	Spill Tray designed for a 205L Drum	89cm x 96cm x 19cm
893-0384	60L	Polyethylene 60L Spill Tray	100cm x 60cm x 17.5cm
893-0381	60L	Polyethylene 60L Spill Tray with Grate	100cm x 60cm x 17.5cm
893-0397	100L	Polyethylene 100L Spill Tray	120cm x 80cm x 17.5cm
893-0388	100L	Polyethylene 100L Spill Tray with Grate	120cm x 80cm x 17.5cm
694-325	9L	Polypropylene 9L Spill Tray	57cm x 38.5cm x 5cm
694-332	9L	Polypropylene 9L Spill Tray	79cm x 40cm x 4cm
694-331	16L	Polypropylene 16L Spill Tray with Pourer	53cm x 40cm x 10cm
694-326	65L	Polypropylene 65L Spill Tray	100cm x 55cm x 15cm
694-328	100L	Polypropylene 100L Spill Tray	100cm x 100cm x 12cm

Spill Kits are an essential component of any spill response plan. They provide a fast, ready-to-use solution to contain and clean up spills before they escalate into serious health, safety, or environmental hazards. Available in a range of types, sizes, and formats, Spill Kits are tailored to the substances being handled and the environments in which they're used.

MAINTENANCE SPILL KITS

All-Purpose Kits for Everyday Spills

- Designed for general industrial use where a variety of non-aggressive liquids may be present, including oils, coolants, solvents, and water-based fluids.
- Ideal for workshops, manufacturing facilities, and maintenance areas.
- Includes a mix of absorbent pads, socks, pillows and disposal bags.
- Available in portable bags, wheelie bins, or large mobile containers depending on site needs.
- A reliable first response kit for multi-liquid environments.



OIL-ONLY SPILL KITS

Specialist Kits for Hydrocarbon and Oil Spills

- Engineered to respond quickly to oil and hydrocarbon-based spills, while repelling water.
- Ideal for use outdoors or in environments where water is also present, such as marinas, loading bays, and outdoor storage areas.
- Contains white absorbents that float and remain effective even when saturated.
- Available in compact bags, drums, or wheeled bins to suit different operational requirements.



Placement is key: Position Spill Kits in high-risk and high-traffic areas, clearly visible, easy to access, and regularly inspected. This ensures immediate response, minimal disruption, and maximum safety.

CHEMICAL SPILL KITS

High-Safety Kits for Hazardous and Aggressive Liquids

- Specifically designed for spills involving acids, alkalis, detergents, and other aggressive or hazardous chemicals.
- All components are yellow to indicate chemical spill response and reinforce the need for PPE and proper disposal protocols.
- Essential for chemical processing plants, laboratories, and high-risk areas.
- Supplied in various formats, from portable shoulder bags to fully equipped wheeled bins.
- Supports compliance with COSHH and hazardous substance regulations.



ADBLUE SPILL KITS

Specialist Kits for Urea-Based Diesel Exhaust Fluid (DEF) Spills

- Specifically designed for the safe clean-up of AdBlue (Diesel Exhaust Fluid), a urea-based, corrosive liquid used in emissions control systems.
- Ideal for use at fueling stations, fleet depots, workshops, and vehicle maintenance areas.
- Includes absorbents that are chemically compatible with AdBlue to avoid degradation or reaction during clean-up.
- Helps prevent corrosion damage to floors, equipment, and sensitive surfaces.
- Supplied in various formats, from portable shoulder bags to fully equipped wheeled bins.



RS PRO Maintenance Spill Kits

Article	Product	Contents
771-6465	15L Maintenance Spill Kit - Clip Top	8 x pads, 3 x 1.2m socks, 2 x waste bags & zip ties, 1 x manual, 1 x cliptop bag
771-6471	28L Maintenance Spill Kit - Clip Top	20 x pads, 2 x 1.2m socks, 2 x waste bags & zip ties, 1 x manual, 1 x cliptop bag
771-6487	35L Maintenance Spill Kit - Vinyl Holdall	30 x pads, 2 x 1.2m socks, 2 x waste bags & zip ties, 1 x manual, 1 x bag with zip and strap
360-106	50L Maintenance Spill Kit - Clip Top	50 x pads, 4 x 1.2m socks, 5 x waste bags & zip ties, 1 x manual, 1 x cliptop bag
872-5754	50L Maintenance Spill Kit - Vinyl Holdall	50 x pads, 4 x 1.2m socks, 3 x waste bags & zip ties, 1 x manual, 1 x bag with strap
771-6493	70L Maintenance Spill Kit - Clip Top	35 x pads, 10 x 1.2m socks, 6 x waste bags & zip ties, 1 x manual, 1 x cliptop bag
872-5763	80L Maintenance Spill Kit - Static Bin	80 x pads, 6 x 1.2m socks, 6 x waste bags & zip ties, 1 x manual, 1 x static bin
771-6500	120L Maintenance Spill Kit - 2 Wheeled Bin	60 x pads, 6 x 3m socks, 2 x pillows, 1 x haz tape, 10 x waste bags & zip ties, 2 x red security tags, 1 x manual, 1 x wheelie bin
776-9709	120L Maintenance Spill Kit Refill	60 x pads, 6 x 3m socks, 2 x pillows, 1 x haz tape, 10 x waste bags & zip ties, 2 x red security tags, 1 x manual, 1 x box
771-6516	240L Maintenance Spill Kit - 2 Wheeled Bin	160 x pads, 8 x 3m socks, 2 x pillows, 1 x haz tape, 18 x waste bags & zip ties, 2 x red security tags, 1 x manual, 1 x 2 wheeled bin
136-7566	600L Maintenance Spill Kit - 4 Wheeled Drop Front Bin	300 x pads, 8 x 3m socks, 16 x pillows, 2 x roll, 1 x haz tape, 1 x floor sign, 40 x waste bags & zip ties, 1 x manual, 1 x 4 wheeled drop front bin
360-099	600L Maintenance Spill Kit - 4 Wheeled Bin	300 x pads, 16 x 3m socks, 20 x 1.2m socks, 16 x pillows, 1 x roll, 1 x haz tape, 1 x floor sign, 40 x waste bags & zip ties, 1 x manual, 1 x 4 wheeled bin
360-101	1000L Maintenance Spill Kit - 4 Wheeled Bin	500 x pads, 16 x 3m socks, 20 x 1.2m socks, 20 x pillows, 2 x rolls, 1 x haz tape, 1 x floor sign, 60 x waste bags & zip ties, 1 x manual, 1 x 4 wheeled bin
360-095	1000L Maintenance Spill Kit - 4 Wheeled Drop Front Bin	500 x pads, 16 x 3m socks, 20 x 1.2m socks, 20 x pillows, 2 x rolls, 1 x haz tape, 1 x floor sign, 60 x waste bags & zip ties, 1 x manual, 1 x 4 wheeled drop front bin



RS PRO Oil-Only Spill Kits

Article	Product	Contents
771-6468	15L Oil Only Spill Kit - Clip Top	8 x pads, 3 x 1.2m socks, 2 x waste bags & zip ties, 1 x manual, 1 x cliptop bag
771-6474	28L Oil Only Spill Kit - Clip Top	20 x pads, 2 x 1.2m socks, 2 x waste bags & zip ties, 1 x manual, 1 x cliptop bag
771-6480	35L Oil Only Spill Kit - Clip Top	30 x pads, 2 x 1.2m socks, 2 x waste bags & zip ties, 1 x manual, 1 x bag with zip and strap
360-108	50L Oil Only Spill Kit - Clip Top	50 x pads, 4 x 1.2m socks, 5 x waste bags & zip ties, 1 x manual, 1 x cliptop bag
771-6522	50L Oil Only Spill Kit - Vinyl Holdall	50 x pads, 4 x 1.2m socks, 3 x waste bags & zip ties, 1 x manual, 1 x bag with strap
771-6496	70L Oil Only Spill Kit - Clip Top	35 x pads, 10 x 1.2m socks, 6 x waste bags & zip ties, 1 x manual, 1 x cliptop bag
872-5760	80L Oil Only Spill Kit - Static Bin	80 x pads, 6 x 1.2m socks, 6 x waste bags & zip ties, 1 x manual, 1 x static bin
771-6503	120L Oil Only Spill Kit - 2 Wheeled Bin	60 x pads, 6 x 3m socks, 2 x pillows, 1 x haz tape, 10 x waste bags & zip ties, 2 x red security tags, 1 x manual, 1 x box
776-9703	120L Oil Only Spill Kit Refill	60 x pads, 6 x 3m socks, 2 x pillows, 1 x haz tape, 10 x waste bags & zip ties, 2 x red security tags, 1 x manual, 1 x box
771-6519	240L Oil Only Spill Kit - 2 Wheeled Bin	160 x pads, 8 x 3m socks, 2 x pillows, 1 x haz tape, 18 x waste bags & zip ties, 2 x red security tags, 1 x manual, 1 x 2 wheeled bin
136-7564	600L Oil Only Spill Kit - 4 Wheeled Drop Front Bin	190 x pads, 8 x 3m socks, 16 x pillows, 2 x rolls, 4 x booms, 1 x haz tape, 1 x floor sign, 40 x waste bags & zip ties, 1 x manual, 1 x 4 wheeled bin
360-102	600L Oil Only Spill Kit - 4 Wheeled Bin	300 x pads, 16 x 3m socks, 20 x 1.2m socks, 16 x pillows, 1 x roll, 1 x haz tape, 1 x floor sign, 40 x waste bags & zip ties, 1 x manual, 1 x 4 wheeled bin
136-7565	900L Oil Only Spill Kit - 4 Wheeled Bin	300 x pads, 6 x 3m socks, 16 x pillows, 2 x rolls, 6 x booms, 1 x haz tape, 1 x floor sign, 50 x waste bags & zip ties, 1 x manual, 1 x 4 wheeled bin
360-104	1000L Oil Only Spill Kit - 4 Wheeled Bin	500 x pads, 16 x 3m socks, 20 x 1.2m socks, 20 x pillows, 2 x rolls, 1 x haz tape, 1 x floor sign, 60 x waste bags & zip ties, 1 x manual, 1 x 4 wheeled bin



RS PRO Chemical Spill Kits

Article	Product	Contents
771-6462	15L Chemical Spill Kit - Clip Top	8 x pads, 3 x 1.2m socks, 2 x waste bags & zip ties, 1 x manual, 1 x cliptop bag
771-6478	28L Chemical Spill Kit - Clip Top	20 x pads, 2 x 1.2m socks, 2 x waste bags & zip ties, 1 x manual, 1 x cliptop bag
360-105	50L Chemical Spill Kit - Clip Top	50 x pads, 4 x 1.2m socks, 5 x waste bags & zip ties, 1 x manual, 1 x cliptop bag
872-5772	50L Chemical Spill Kit - Vinyl Holdall	50 x pads, 4 x 1.2m socks, 3 x waste bags & zip ties, 1 x manual, 1 x vinyl bag
771-6490	70L Chemical Spill Kit - Clip Top	35 x pads, 10 x 1.2m socks, 6 x waste bags & zip ties, 1 x manual, 1 x cliptop bag
872-5776	80L Chemical Spill Kit - Static Bin	80 x pads, 6 x 1.2m socks, 6 x waste bags & zip ties, 1 x manual, 1 x static bin
771-6507	120L Chemical Spill Kit - 2 Wheeled Bin	60 x pads, 6 x 3m socks, 2 x pillows, 1 x haz tape, 10 x waste bags & zip ties, 2 x red security tags, 1 x manual, 1 x box
776-9712	120L Chemical Spill Kit Refill	60 x pads, 6 x 3m socks, 2 x pillows, 1 x haz tape, 10 x waste bags & zip ties, 2 x red security tags, 1 x manual, 1 x box
771-6513	240L Chemical Spill Kit - 2 Wheeled Bin	160 x pads, 8 x 3m socks, 2 x pillows, 1 x haz tape, 18 x waste bags & zip ties, 2 x red security tags, 1 x manual, 1 x 2 wheeled bin
360-097	600L Chemical Spill Kit - 4 Wheeled Bin	300 x pads, 16 x 3m socks, 20 x 1.2m socks, 16 x pillows, 1 x roll, 1 x haz tape, 1 x floor sign, 40 x waste bags & zip ties, 1 x manual, 1 x 4 wheeled bin
360-092	600L Chemical Spill Kit - 4 Wheeled Drop Front Bin	300 x pads, 16 x 3m socks, 20 x 1.2m socks, 16 x pillows, 1 x roll, 1 x haz tape, 1 x floor sign, 40 x waste bags & zip ties, 1 x manual, 1 x 4 wheeled drop front bin
360-098	1000L Chemical Spill Kit - 4 Wheeled Bin	500 x pads, 16 x 3m socks, 20 x 1.2m socks, 20 x pillows, 2 x rolls, 1 x haz tape, 1 x floor sign, 60 x waste bags & zip ties, 1 x manual, 1 x 4 wheeled bin
360-094	1000L Chemical Spill Kit - 4 Wheeled Drop Front Bin	500 x pads, 16 x 3m socks, 20 x 1.2m socks, 20 x pillows, 2 x rolls, 1 x haz tape, 1 x floor sign, 60 x waste bags & zip ties, 1 x manual, 1 x 4 wheeled drop front bin



RS PRO AdBlue Spill Kits

Article	Product	Contents
360-082	15L AdBlue Spill Kit - Clip Top	15 x pads, 1 x 1.2m socks, 1 x waste bag & zip tie, 1 x manual, 1 x cliptop bag
360-083	30L AdBlue Spill Kit - Clip Top	25 x pads, 3 x 1.2m socks, 3 x waste bags & zip ties, 1 x manual, 1 x cliptop bag
360-086	50L AdBlue Spill Kit - Clip Top	50 x pads, 4 x 1.2m socks, 5 x waste bags & zip ties, 1 x manual, 1 x cliptop bag
360-085	50L AdBlue Spill Kit - Vinyl Holdall	50 x pads, 4 x 1.2m socks, 5 x waste bags & zip ties, 1 x manual, 1 x vinyl bag
360-088	80L AdBlue Spill Kit - Static Bin	80 x pads, 6 x 1.2m socks, 6 x haz waste bags & zip ties, 1 manual, 1 x static bin
360-089	120L AdBlue Spill Kit - 2 Wheeled Bin	110 x pads, 10 x 1.2m socks, 10 x waste bags & zip ties, 3 x red security tags, 1 x manual, 1 x 2 wheeled bin
360-091	240L AdBlue Spill Kit - 2 Wheeled Bin	225 x pads, 20 x 1.2m socks, 18 x waste bags & zip ties, 3 x red security tags, 1 x manual, 1 x 2 wheeled bin



Drain protection is essential for environmental compliance - particularly under regulations like the UK's Environmental Protection Act and the Pollution Prevention Guidelines (PPGs).

DRAIN PROTECTION

Preventative Solutions to Stop Spills Reaching Watercourses

- Designed to block or seal drainage points during a spill incident, preventing harmful liquids from entering the drainage system or the environment.
- Ideal for use in high-risk areas such as loading bays, storage yards, fueling stations, and chemical handling zones.
- Available in a range of formats including:
 - o Drain Covers – reusable or single-use mats that create a surface seal.
 - o Drain Seals and Mats – flexible polyurethane sheets that mould to surface contours.
- Often included in Spill Response Plans to ensure that containment happens at both the spill source and potential exit points.
- Lightweight, portable, and easy to deploy.



Article	Product	Dimension	Format
136-7537	Polyurethane Drain Cover	90 x 90 x 0.8cm	Polyurethane
136-7536	Polyurethane Spill Barrier	300 x 7 x 10cm	Polyurethane
136-7538	Polyurethane Drain Cover	60 x 60 x 0.8cm	Polyurethane
136-7539	Polyurethane Drain Cover	50 x 50 x 0.8cm	Polyurethane
771-6575	Neoprene Drain Mat	90cm x 90cm	Neoprene
771-6579	Bentonite Clay Drain Mat (4/box)	65cm x 45cm	Clay
694-333	Bentonite Clay Drain Mat (2/box)	45cm x 45cm	Clay



Granules, or loose absorbents, are designed to soak up a wide variety of liquid spills effectively.

GRANULES

Granule Solutions for Challenging Surfaces

- Traditional types are made from natural minerals such as clay, attapulgite, and sepiolite.
- Newer, more advanced granules are formulated from lightweight alumina silicate for improved performance.
- Key properties to consider when selecting granules include grain size (impacts absorption speed and spread), dust levels (affects cleanliness and air quality), fire resistance (important for high-risk environments) and chemical resistance (ensures compatibility with a wide range of liquids).
- Ideal for use on porous surfaces like tarmac, walkways, and floors, where mats or pads may be less effective.

Article	Product	Format
349-432	RS Pro Spill Aid 5L Pouch	Alumina Silicate
349-433	RS Pro Spill Aid 30L Bag	Alumina Silicate



DISPOSAL BAGS & TIES

Article	Product	Qty
694-334	Blue Hazardous Waste Disposal Bags & Ties	100 Blue Hazardous Waste Disposal Bag, 100 Ties



Chemical Compatibility Chart

Buy this and more at rspro.com



● Maintenance ○ Oil-Only ● Chemical

Acetaldehyde	●	●
Acetic Acid		●
Acetic Acid Amyl Ester	●	○
Acetic Anhydride	●	●
Acetone	●	○
Acetyl Chloride	●	○
Acrolein		○
Acrylic Acid		●
Acrylic Emulsions	●	●
Acrylonitrile	●	●
Allyl Alcohol	●	●
Aminobenzoic Acid		●
Ammonia (anhydrous)	●	○
Ammonium Hydroxide	●	○
Amyl Acetate		○
Amyl Alcohol		●
Aniline	●	●
Aqua Regia	●	●
Aviation Fuel	●	○
Benzene	●	○
Benzoic Ether	●	○
Benzonitrile	●	●
Benzyl Alcohol	●	●
Benzyl Chloride	●	●
Boric Acid		●
Brake Fluid	●	○
Bromine	●	●
Butyl Acetate	●	○
Butyl Alcohol	●	○
Butylamine	●	●
Butyric Acid		○
Calcium Hydroxide	●	○
Carbolic Acid		●
Castor Oil	●	●
Chloroacetic Acid		●

Chlorobenzene	●	●
Chlorine	●	●
Chlorine Soda		●
Chloroform	●	○
Chlorosulphuric Acid		●
Chlorox (full bleach)		●
Chromic Acid		●
Citric Acid		●
Corn Oil	●	○
Cottonseed Oil	●	○
Cresol	●	○
Cyclohexane	●	○
Detergents	●	●
Dichlorobenzol	●	○
Diethyl Amine	●	○
Diethyl Ether	●	○
Di-Nitrobenzene	●	○
Dioxan	●	●
Disooctyl Phthalate	●	○
Ether	●	○
Ethyl Acetate	●	○
Ethyl Alcohol	●	○
Ethyl Chloride	●	○
Ethyl Ether	●	○
Ethylene Glycol	●	●
Ethyl Propionate	●	○
Formaldehyde	●	●
Formic Acid		●
Fuel Oil	●	○
Galvanic Liquids	●	●
Gearbox Oil	●	○
Heptane	●	○
Hexane	●	○
Hydrazine	●	●
Hydrochloric Acid	●	●

Hydrofluoric Acid	●	●
Hydrogen Cyanide	●	○
Hydrogen Peroxide	●	●
Isobutyl Alcohol	●	○
Isobutyric Acid	●	○
Isopropyl Acetate	●	○
Isopropyl Alcohol	●	○
Kerosene	●	○
Ketones	●	○
Linseed Oil	●	○
Lubricating Oil	●	○
Magnesium Oxide Hydrate	●	●
Methyl Alcohol	●	○
Methyl Chloride	●	○
Methyl Ether	●	○
Methyl Ethyl Ketone	●	○
Methyl Methacrylate	●	○
Methyl Propionate	●	○
Milk	●	●
Mineral Oil	●	○
Mineral Sprits	●	○
Motor Oil	●	○
Naphthalene	●	○
Nitric Acid	●	●
Nitrobenzene Acid		●
Nitrobenzol	●	●
Nitrotoluene	●	○
Octane	●	○
Oleic Acid	●	○
Olive Oil	●	○
Petroleum Ether	●	○
Phenol	●	●
Phenyl Formic Acid		●
Phosphoric Acid		●
Potassium Hydroxide		●

Propanol	●	●
Propionic Acid	●	○
Propyl Alcohol	●	○
Propylene Glycol	●	○
Quinoline	●	●
Resorcinol	●	●
Saccharose	●	●
Salt Solutions (metallic)	●	●
Silicone Oil	●	○
Silver Nitrate	●	●
Soap Solutions	●	○
Sodium Bicarbonate	●	●
Sodium Chloride	●	●
Sodium Hydroxide	●	○
Sodium Nitrate	●	●
Stannic Chloride	●	●
Starch	●	●
Styrene	●	○
Sucrose	●	●
Sulphuric Acid		●
Synthetic Motor Oil	●	○
Tannic Acid		●
Tin Chloride	●	●
Toluene	●	○
Transformer Oil	●	○
Trichlorethylene	●	○
Triethylene Glycol	●	○
Turpentine	●	○
Urine	●	●
Vinegar	●	●
Vinyl Acetate	●	○
Water	●	●

* The user of this chart agrees to indemnify and hold RS Pro harmless against loss or threatened loss

RS PRO products are audited against demanding international standards, inspected for durability and consistency and tested by leading engineers.

Only when products have been through this process they are awarded our seal of approval, demonstrating quality that can be trusted. Confidence in this process is reflected in our long product warranties - proof that our products will consistently deliver the quality you expect for a long time to come.



AUDITED

In compliance with industry standard



INSPECTED

By leading engineers



TESTED

For guaranteed quality and performance



rspro.com