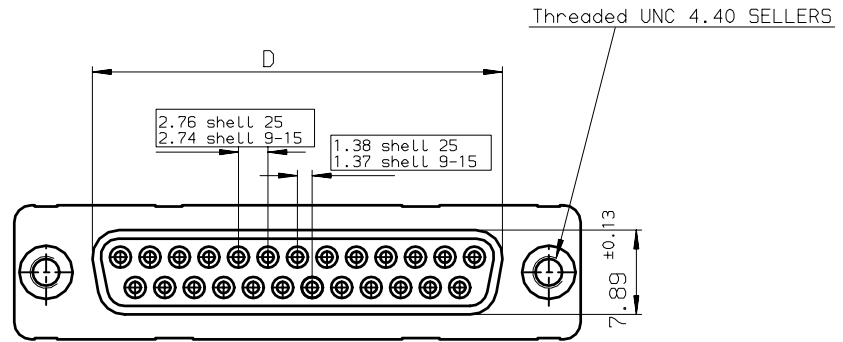
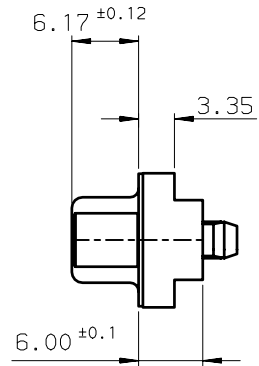
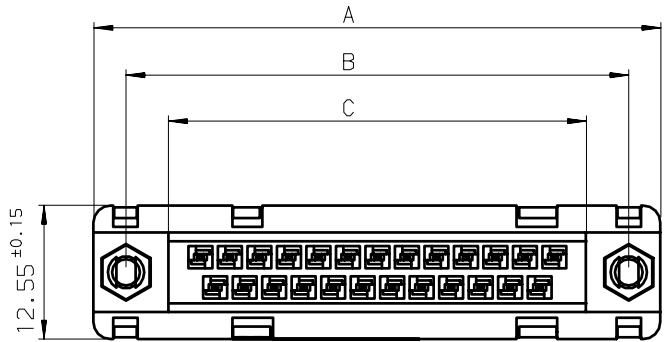


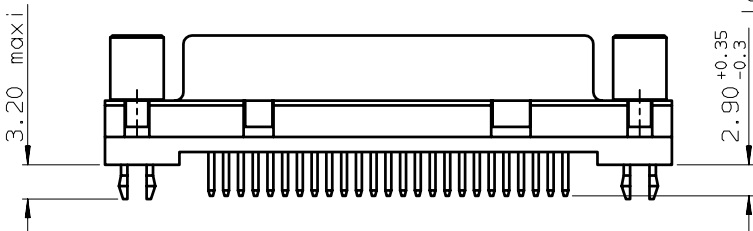
Tous droits strictement réservés. Reproduction ou communication a des tiers interdite sous quelque forme que ce soit sans autorisation écrite du propriétaire. Propriété de c FCI. Droits de reproduction FCI.

FCI

ALL rights strictly reserved. Reproduction or issue to third parties in any form whatever is not permitted without written authority from the proprietor. Property of FCI. Copyright FCI.

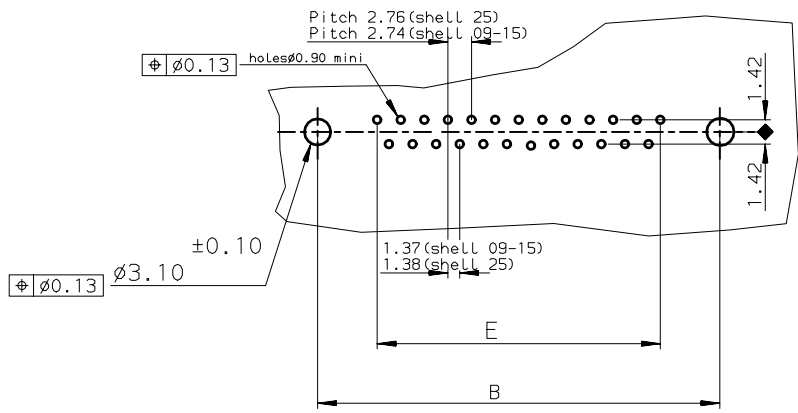


SHELL	A ± 0.38	B ± 0.12	C ± 0.10	D ± 0.25	E ± 0.07
09	30.81	24.99	16.96	16.21	10.96
15	39.14	33.32	25.18	24.54	19.18
25	53.03	47.04	39.12	38.25	33.12



Core range		DESIGNATIONS		
SHELL	TIN LEAD P/N	LEAD FREE P/N		
09	D09S24A4GV00	D09S24A4GV00LF	RECEPTACLE 9 CTS STRAIGHT-SOLDER TO BOARD-PCB HARPOON-SCREWLOCK UNC 4.40-ELEC.CONTIN.-PERFORM. LEVEL PL3	
15	D15S24A4GV00	D15S24A4GV00LF	RECEPTACLE 15 CTS STRAIGHT-SOLDER TO BOARD-PCB HARPOON-SCREWLOCK UNC 4.40-ELEC.CONTIN.-PERFORM. LEVEL PL3	
25	D25S24A4GV00	D25S24A4GV00LF	RECEPTACLE 25 CTS STRAIGHT-SOLDER TO BOARD-PCB HARPOON-SCREWLOCK UNC 4.40-ELEC.CONTIN.-PERFORM. LEVEL PL3	

PC card drilling dimensions (after plating)
(thickness 1.60 ± 0.20mm)



**GENERAL CHARACTERISTICS AND ROHS INFORMATIONS:
SEE DRAWING C01-8646-0000**

European view

FCI	www.fciconnect.com		ISO 1302	tolerance ISO 406 ISO 1101	projection 	mm 					
	Dr	JOUBERT	21/12/00	Product family	D-SUB	size	A3	Scale	2		
Eng	PESSON	21/12/00	Material	SEE NOTES	ECN	LS05-001					
Chr	LEGARE	21/12/00									
Appr	LEGARE	21/12/00									
title				RECEPTACLE STD EUROPE		dwg no		C01-8646-0752		Rev.	E
catalog no				- CUSTOMER COPY		sheet		1 of 1			

ltr	ecn no	dr	date
D	-	SBA	16/04/03
E	LS05-001	MPE	14/03/05
-	-	-	-
-	-	-	-
-	-	-	-
-	-	-	-