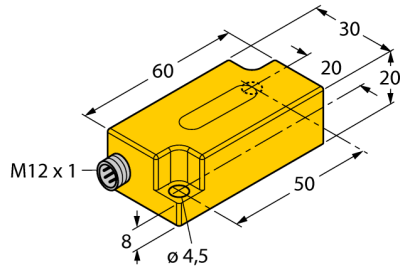
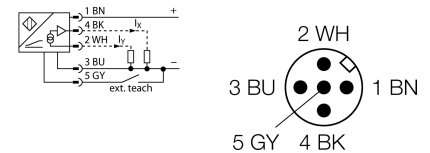


Inclinometer
B2N10H-Q20L60-2LI2-H1151



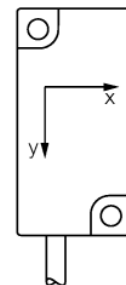
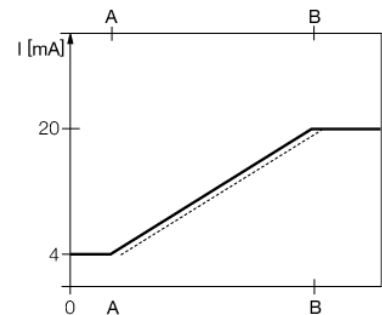
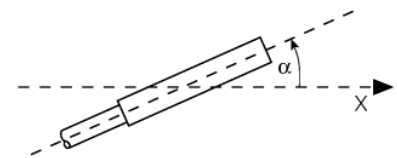
- Plastic, PC
- Zero point calibration +/- 5°
- Two analog outputs
- M12 x 1 male connector

Wiring diagram



Functional principle

Inclination is determined by a wear-free semi-conducting sensor element.



Type code	B2N10H-Q20L60-2LI2-H1151
Ident no.	1534012
Measuring range	-10...+10°
Measuring range x-axis	-10...+10°
measuring range y-axis	-10...+10°
Repeatability	≤ 0.2 % of measuring range A - B ≤ 0.1 %, after warm-up 0.5 h
Absolute accuracy (at 25 °C)	+/- 0.3 °
Temperature coefficient typical	0.01 °/K
Resolution	≤ 0.04 °
Ambient temperature	-30...+70 °C
Operating voltage	10...30VDC
No-load current I ₀	≤ 20 mA
Rated insulation voltage	≤ 0.5 kV
Wire breakage / Reverse polarity protection	yes/ yes
Output function	5-pin, analog output
Current output	4...20mA
Load resistance, current output	≤ 0.2 kΩ
Response time	0.1 s time for the output signal to achieve 90% full scale if the angle changes from -10° to +10°
Construction	rectangular, Q20L60
Dimensions	60 x 30 x 20 mm
Housing material	plastic, PC
Connection	male, M12 x 1
Vibration resistance	55 Hz (1 mm)
Shock resistance	30 g (11 ms)
IP Rating	IP68 / IP69K
MTTF	203 years acc. to SN 29500 (Ed. 99) 40 °C

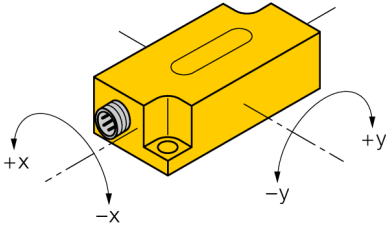
Inclinometer
B2N10H-Q20L60-2LI2-H1151

TURCK

Industrial
Automation

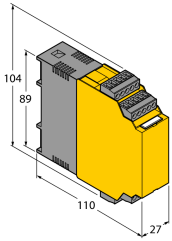

Mounting instructions / Description

Tilt angle



Inclinometer
B2N10H-Q20L60-2LI2-H1151

Accessories

Type code	Ident no.	Description	Design
IM43-13-SR	7540041	Trip amplifier; 1-channel; input 0/4...20 mA or 0/2...10 V; supply of 2- or 3-wire transmitters/sensors; limit value adjustment via teach button; three relay outputs with one NO contact each; removable terminal blocks; 27 mm wide; universal voltage supply 20...250 VUC; further Limit value indicators are described in our "Interface Technology" catalog.	
VB2-SP3	6999085	Teach adapter	
SG-Q20L60	6901100	Protective frame for Q20L60; protects against mechanical impact; stainless steel	