



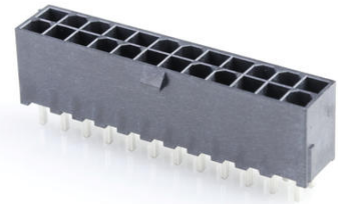
**Part Number :** [462071224](#)

**Product Description :** 4.20mm Pitch, Mini-Fit Jr. Reflow Solder Capable Header, Dual Row, Vertical, 6 Circuits, 3.18mm PCB Thickness, without PCB Pegs, LCP Housing, with Tin (Sn) Over Nickel (Ni) Plating, Glow-Wire Capable, Tray

**Series Number :** 46207

**Status :** Active

**Product Category :** PCB Headers and Receptacles



---

## Documents & Resources

### Drawings

[462071224 sd.pdf](#)

[PK-46207-001-000.pdf](#)

### 3D Models and Design Files

[STEP AP242](#)

[SOLIDWORKS](#)

[Creo](#)

[Symbol and Footprint \(Multi-Format\)](#)

[SYM-46207-1024-001.zip](#)

### Specifications

[55560002-AS-000.pdf](#)

[PS-45750-001-001.pdf](#)

[55560004-PS-CH-000.pdf](#)

[55560004-PS-ES-000.pdf](#)


[55560004-PS-SK-000.pdf](#)

[PS-5556-004-001.pdf](#)

---

## Product Environment Compliance

### Compliance

GADSL/IMDS	Compliant with Exemption 44; 33
China RoHS	 per SJ/T 11365-2006

EU ELV	Not Relevant
Low-Halogen Status	Low-Halogen per IEC 61249-2-21
REACH SVHC	Not Contained per D(2025)4165-DC (25 June 2025)
EU RoHS	Compliant per EU 2015/863

### Compliance Statements

- EU RoHS
- REACH SVHC
- Low-Halogen

### Industry Documents

- IPC 1752A Class C
- IPC 1752A Class D
- Molex Product Compliance Declaration
- IEC-62474
- chemSHERPA (xml)

### Substances of Interest

- PFAS

### EU RoHS Certificate of Compliance

### Additional Product Compliance Information

## Part Details

### General

Status	Active
Category	PCB Headers and Receptacles
Series	46207
Description	4.20mm Pitch, Mini-Fit Jr. Reflow Solder Capable Header, Dual Row, Vertical, 6 Circuits, 3.18mm PCB Thickness, without PCB Pegs, LCP Housing, with Tin (Sn) Over Nickel (Ni) Plating, Glow-Wire Capable, Tray
Application	Board-to-Board, Power, Wire-to-Board
Comments	Current for wire-to-wire applications = 13.0A max. per circuit; Current for wire-to-board applications = 9.0A max. per circuit

Component Type	PCB Header
Product Name	Mini-Fit Jr.
UPC	883906252014

### Agency

CSA	LR19980
UL	E29179

### Electrical

Current - Maximum per Contact	13.0A
Voltage - Maximum	600V AC (RMS)/DC

### Physical

Breakaway	No
Circuits (Loaded)	24
Circuits (maximum)	24
Color - Resin	Black
Durability (mating cycles max)	30
First Mate / Last Break	No
Flammability	94V-0
Glow-Wire Capable	Yes
Guide to Mating Part	No
Lock to Mating Part	Yes
Material - Metal	Brass
Material - Plating Mating	Matte Tin
Material - Plating Termination	Matte Tin
Material - Resin	High Temperature Thermoplastic
Net Weight	8.299/g
Number of Rows	2
Orientation	Vertical
Packaging Type	Tray
PCB Locator	Yes
PCB Retention	Yes
PCB Thickness - Recommended	3.18mm
PC Tail Length	5.26mm

Pitch - Mating Interface	4.20mm
Pitch - Termination Interface	4.20mm
Plating min - Termination	2.540µm
Polarized to Mating Part	Yes
Polarized to PCB	Yes
Shrouded	Fully
Stackable	No
Temperature Range - Operating	-40° to +105°C
Termination Interface Style	Through Hole

### Solder Process Data

Max-Duration	30
Lead-Free Process Capability	SMC&WAVE
Max-Cycle	3
Max-Temp	265

---

### Mates With / Use With

#### Mates with Part(s)

Description	Part Number
Mini-Fit TPA2 and Mini-Fit Sigma Dual Row Receptacle Housings	<u>172708</u>
Mini-Fit Jr. Receptacle Housings	<u>5557</u>