

PLEASE CHECK WWW.MOLEX.COM FOR LATEST PART INFORMATION

Part Number: [5600200320](#)
Status: **Active**
Overview: [DuraClik™ Connector System](#)
Description: [DuraClik™ Wire-to-Board Header, Single Row, Vertical, 3 Circuits, Tin \(Sn\) Over Nickel, Natural](#)

Documents:

3D Model	Packaging Specification PK-560020-002-JP-001 (PDF)
Drawing (PDF)	RoHS Certificate of Compliance (PDF)
Product Specification PS-502351-001-001 (PDF)	

General

Product Family	PCB Headers
Series	560020
Application	Signal, Wire-to-Board
Comments	The Operating Temperature Range when used with DuraClik series 502351 is -40°C to +105°C. It is -40°C to 125°C when used with DuraClik ISL series 560123 or TPA series 505151.
Overview	DuraClik™ Connector System
Product Name	DuraClik
UPC	887191747095

Physical

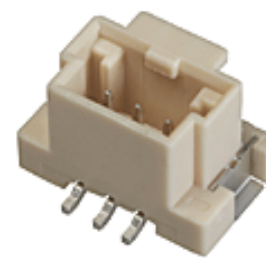
Breakaway	No
Circuits (Loaded)	3
Circuits (maximum)	3
Color - Resin	Natural
Durability (mating cycles max)	30
First Mate / Last Break	No
Glow-Wire Compliant	No
Keying to Mating Part	None
Lock to Mating Part	Yes
Material - Metal	Copper Alloy
Material - Plating Mating	Tin over Nickel
Material - Resin	Polyamide
Net Weight	0.578/g
Number of Rows	1
Orientation	Vertical
PCB Locator	No
PCB Retention	Yes
Packaging Type	Embossed Tape on Reel
Pitch - Mating Interface	2.00mm
Polarized to Mating Part	Yes
Polarized to PCB	Yes
Stackable	No
Temperature Range - Operating	-40°C to +105°C, -40°C to +125°C
Termination Interface: Style	Surface Mount

Electrical

Current - Maximum per Contact	3.0A
Voltage - Maximum	125V AC (RMS)/DC

Solder Process Data

Duration at Max. Process Temperature (seconds)	004
Lead-freeProcess Capability	REFLOW



Series image - Reference only

EU ELV

Compliant

EU RoHS

Compliant

REACH SVHC

Not Contained Per - ED/30/2017 (7 July 2017)

Halogen-Free

Status

Not Low-Halogen

Need more information on product environmental compliance?

Email productcompliance@molex.com
Please visit the [Contact Us](#) section for any non-product compliance questions.

China ROHS

ELV

RoHS Phthalates

Green Image

Compliant

Not Contained

Search Parts in this Series

[560020 Series](#)

Mates With

DuraClik™ Crimp Housings [502351](#) , [560123](#) , [505151](#)

Max. Cycles at Max. Process Temperature	001
Process Temperature max. C	255

Material Info

Reference - Drawing Numbers

Packaging Specification	PK-560020-002-JP-001
Product Specification	PS-502351-001-001
Sales Drawing	SD-560020-001, SD-560020-003

This document was generated on 10/23/2017

PLEASE CHECK WWW.MOLEX.COM FOR LATEST PART INFORMATION