

Rittal – The System.

Faster – better – everywhere.

► **Telescopic slides for
component shelves,
for mounting on the
VX enclosure frame
and for upgrading
existing VX and TS
applications – DK
7161.000**

Date : Apr 26, 2021

ENCLOSURES

POWER DISTRIBUTION

CLIMATE CONTROL

IT INFRASTRUCTURE

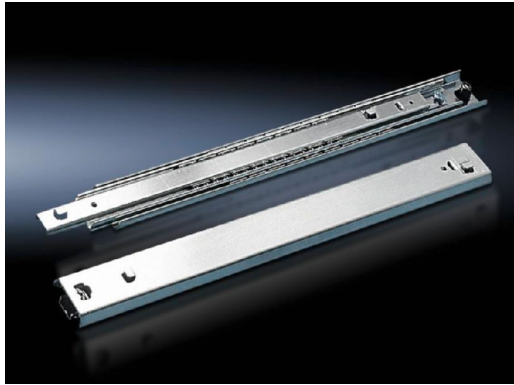
SOFTWARE & SERVICES

FRIEDHELM LOH GROUP



Telescopic slides for component shelves, for mounting on the VX enclosure frame and for upgrading existing VX and TS applications – DK 7161.000

created: 26.04.2021 build on www.rittal.com/uk-en



Product description	
Description:	Fixed component shelves are easily converted to full withdrawal. For this purpose, the existing fastening bolts or mounting rails (heavy-duty version) are exchanged for the telescopic slides.
Material:	Sheet steel
Surface finish:	Zinc-plated
Note:	For installation and locking on a 25 mm pitch pattern in the enclosure depth.

Product description	
To fit component shelf depth:	600 mm
Load capacity:	50 kg
Packs of:	2 pc(s).
Weight/pack:	2.36 kg
Copper weight (kg per piece):	0
EAN:	4028177126039
Customs tariff	73269098

number:	
ETIM 7.0:	EC002620
ETIM 6.0:	EC002620
eCl@ss 8.0/8.1:	27189261
eCl@ss 6.0/6.1:	27189261
Product description:	DK Telescopic slides for component shelf, 50 kg, For D: 600 mm
Approvals	
Certificates:	NA