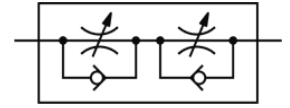
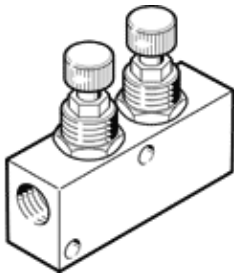


one-way flow control valve GR-1/8X2-B

Part number: 152612

FESTO



Data sheet

Feature	Value
Valve function	One-way flow control function
Pneumatic connection, port 1	G1/8
Pneumatic connection, port 2	G1/8
Adjusting element	Knurled screw
Mounting type	Optional Front panel installation with through hole
Standard nominal flow rate in flow control direction	205 l/min
Standard nominal flow rate in non-return direction	190 l/min
Operating pressure	0.5 ... 10 bar
Ambient temperature	-20 ... 60 °C
Material housing	Wrought Aluminium alloy
Assembly position	Any
Operating medium	Compressed air in accordance with ISO8573-1:2010 [7:4:4]
Note on operating and pilot medium	Lubricated operation possible (subsequently required for further operation)
Medium temperature	-20 ... 60 °C
Nominal size	3 mm
Product weight	54 g
Materials note	Conforms to RoHS
Material seals	NBR
Material sleeve	POM
Material adjusting screw	High alloy steel
Material nut	Wrought Aluminium alloy