



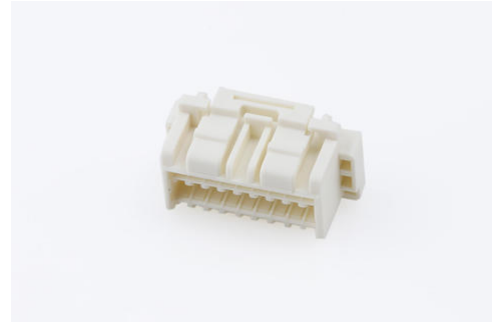
Part Number : [5031491800](#)

Product Description : CLIK-Mate Plug Housing, 1.50mm Pitch, Dual Row, Positive Lock, 18 Circuits, Natural

Series Number : 503149

Status : Active

Product Category : Connector Housings



Documents & Resources

Drawings

[5031491800_sd.pdf](#)

3D Models and Design Files

[STEP AP242](#)

[SOLIDWORKS](#)

[Creo](#)

[5031491800.dxf](#)

Specifications

[AS-503149-001-001.pdf](#)

[SPK-503149-001-001.pdf](#)

[5031490000-PS-000.pdf](#)

[5031491000-PS-000.pdf](#)

[5031491001-PS-000.pdf](#)

[5031491002-PS-000.pdf](#)

[5031491003-PS-000.pdf](#)

[PS-505406-001-001.pdf](#)

[5031490001-PS-000.pdf](#)

[5031490002-PS-000.pdf](#)

[5031491004-PS-000.pdf](#)

Product Environment Compliance

Compliance

GADSL/IMDS	Not Relevant
------------	--------------

China RoHS	per SJ/T 11365-2006
EU ELV	Not Relevant
Low-Halogen Status	Not Low-Halogen per IEC 61249-2-21
REACH SVHC	Not Contained per D(2025)4165-DC (25 June 2025)
EU RoHS	Compliant per EU 2015/863

Compliance Statements

- EU RoHS
- REACH SVHC
- Low-Halogen

Industry Documents

- IPC 1752A Class C
- IPC 1752A Class D
- Molex Product Compliance Declaration
- IEC-62474
- chemSHERPA (xml)

Substances of Interest

- PFAS

EU RoHS Certificate of Compliance

Additional Product Compliance Information

Part Details

General

Status	Active
Category	Connector Housings
Series	503149
Description	CLIK-Mate Plug Housing, 1.50mm Pitch, Dual Row, Positive Lock, 18 Circuits, Natural
Application	Signal, Wire-to-Board
Product Name	CLIK-Mate
UPC	887191689463

Agency

UL	E29179
----	--------

Physical

Circuits (maximum)	18
Color - Resin	Natural
Flammability	94HB
Gender	Plug
Glow-Wire Capable	No
Keying to Mating Part	None
Lock to Mating Part	Yes
Material - Resin	PBT
Number of Rows	2
Packaging Type	Bag
Panel Mount	No
Pitch - Mating Interface	1.50mm
Pitch - Termination Interface	1.50mm
Polarized to Mating Part	Yes
Stackable	No
Temperature Range - Operating	-40° to +105°C

Mates With / Use With

Mates with Part(s)

Description	Part Number
1.50mm Pitch CLIK-Mate Right-Angle Dual Row PCB Receptacles	<u>213228</u>
1.50mm Pitch CLIK-Mate Right-Angle Dual Row PCB Receptacles	<u>503148</u>
1.50mm Pitch CLIK-Mate Vertical Dual Row PCB Receptacles	<u>213227</u>
1.50mm Pitch CLIK-Mate Right-Angle Dual Row PCB Receptacles	<u>503154</u>

Use with Part(s)

Description	Part Number
Pre-Crimped Lead CLIK-Mate 1.50mm Male-to-CLIK-Mate 1.50mm Male, Tin (Sn) Plating,	<u>797581011</u>

300.00mm Length, 24 AWG, Black	
1.50mm Pitch CLIK-Mate Male Crimp Terminals	<u>502579</u>
1.50mm Pitch CLIK-Mate Male Crimp Terminals	<u>503429</u>
CLIK-Mate 1.50mm Pitch Male Crimp Terminals	<u>213028</u>
CLIK-Mate 1.50mm Pitch Male Crimp Terminals	<u>213029</u>
Pre-Crimped Lead Clik-Mate Male-to-Clik-Mate Male	<u>215710</u>
Pre-Crimped Lead Clik-Mate Male-to-Pigtail	<u>215711</u>