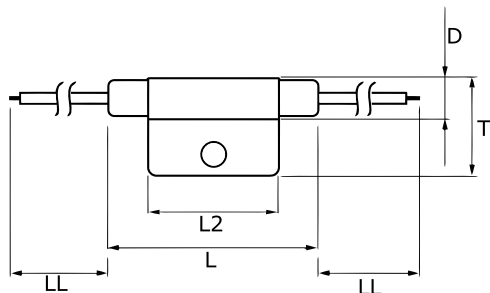


KEMET Part Number: TRS5-40BLRU
(USEG40BLR00000)

KEMET, TRS, Thermal Reed Switch, Axial, 2.5C Temperature Accuracy, High Reliability, High-Speed Response, Long Operational Life, Excellent Environmental Durability, High Temperature Accuracy, 40°C, Break



General Information	
Series:	TRS
Type:	Thermal Reed Switch
Style:	Axial
Description:	Thermal Reed Switch
Features:	High Reliability, High-Speed Response, Long Operational Life, Excellent Environmental Durability, High Temperature Accuracy
Lead:	Cables
RoHS:	Yes

Dimensions	
D	8.2mm
L	50mm
L2	29mm
T	20mm
LL	200mm

Packaging Specifications	
Packaging:	Rubberband Box
Packaging Quantity:	600
Weight:	8.5 g

Specifications	
Switching Temperature:	40C +/-2.5C
Temperature Range:	-20/+130C
Contact Type:	Break
Voltage DC:	1500 VAC/1 minute or 1800 VAC/1 second
Voltage AC:	140 VAC MAX (Opening/Closing)
Current:	0.5 Amps AC MAX (Opening/Closing), 1 mAmps MIN (5VDC, Opening/Closing)
Resistance:	150 mOhms MAX (Contact Resistance)
Max Opening/Closing Power:	50 W (AC/DC)
Max Opening/Closing Voltage:	140 V (AC)
Differential Temperature:	10C Maximum