

Datasheet

## RS Pro 1.27mm 20 Way 2 Row Straight PCB Socket Through Hole Socket Strip

RS Stock No: **251-4343**



### Product Details

RS Pro 20-way 2-row PCB socket offers through-hole mounting and socket strip termination for added flexibility. This straight socket with 1.27 mm pitch has a current rating of 1 A.

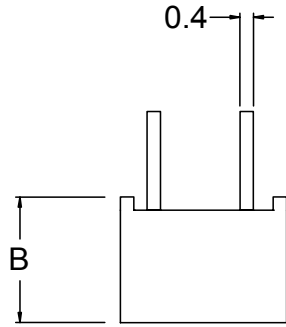
### Features and Benefits

- Selective gold plated contacts
- Single and double row versions
- Socket has tuning fork design contacts

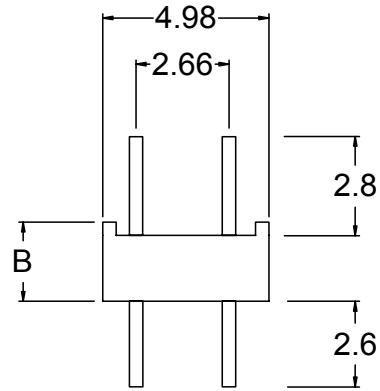
**Specifications:**

Body Orientation	Straight
Contact Material	Phosphor Bronze
Current Rating	1 A
Mounting Type	Through Hole
Number of Contacts	20
Number of Rows	2
Pitch	1.27 mm
Termination Method	Solder
Type	Socket Strip
Contact Plating	Gold Over Nickel
Operating Temperature Range	-40 to +105°C

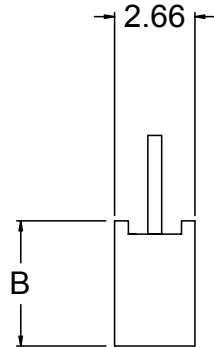
## Square Pin Headers and Sockets



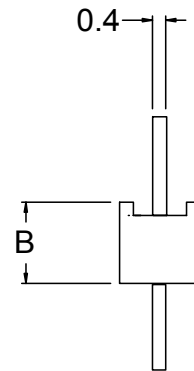
Double Row Header Socket  
W534821 series



Double Row Pin Header  
W5821 series



Single Row Header Socket  
W534811 series



Single Row Pin Header  
W5811 series

Part Number	B
W5811xxSA1 Single Row Header	3
W5811xxSB1 Single Row Header	2.5
W5811xxSC1 Single Row Header	1.7
W5821xxSA1 Double row Header	3
W5821xxSB1 Double Row Header	2.5
W5821xxSC1 Double Row Header	1.7
W53481xxSA Single Row Socket	4.6
W534811xxSB Single Row Socket	8.5
W53821xxSA Double Row Socket	4.6
W53821xxSB Double Row Socket	8.5

In place of xx, add number of pins required. Up to 32 pins for single row and 2 rows of 50 for double row.

Dimensions in mm, unless otherwise stated.