

# CBC-PRC 3-FT25-MS6 800V - Panel feed-through



1453451

<https://www.phoenixcontact.com/gb/products/1453451>

Please be informed that the data shown in this PDF document is generated from our online catalog. Please find the complete data in the user documentation. Our general terms of use for downloads are valid.



Panel feed-through, Range of articles: ArcZero, color: black, number of positions: 3, min. conductor cross section: 1.5 mm<sup>2</sup>, max. conductor cross section: 6 mm<sup>2</sup>, rated voltage: 800 VDC, rated current: 20 A, Connection method: Screw connection, Contact connection type: Pin, Maximum load when disconnecting: 16 kW, scope: DC-Grids

## Your advantages

- Safe connection and disconnection under load
- Fast disconnection of flying leads
- Time-saving maintenance or replacement of connected devices
- Robust outdoor design even for extreme conditions
- Particularly durable and economical

## Commercial data

Item number	1453451
Packing unit	1 pc
Minimum order quantity	1 pc
Sales key	ABLFAA
Product key	ABLFAA
GTIN	4063151841713
Weight per piece (including packing)	65.4 g
Weight per piece (excluding packing)	52.887 g
Customs tariff number	85366990
Country of origin	DE

# CBC-PRC 3-FT25-MS6 800V - Panel feed-through



1453451

<https://www.phoenixcontact.com/gb/products/1453451>

## Technical data

### Notes

Note on application	Maximum load when disconnecting: 16 kW (6.7 $\mu$ F/5 mH)
Note on application	Maximum load when connecting: 2 kW (6.7 $\mu$ F/5 mH)
Note on application	Observe the specifications of the packing slip.
Notes on safety	Fit the protective cap when not plugged in.

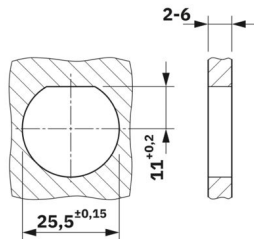
### Product properties

Product type	Panel feed-through
Product family	ArcZero
Area of application	DC-Grids
Number of positions	3

### Insulation characteristics

Protection class	II (plastic housing)
------------------	----------------------

### Dimensions

Dimensional drawing	
Width	35 mm
Height	35 mm
Length	72.6 mm

### Electrical properties

Nominal voltage ATD	800 VDC (III/2.00) in accordance with IEC 61984
	250 VDC Minimum system voltage
	500 VDC (III/2.00) in accordance with IEC 61535
	600 VDC (III/2.00) in accordance with UL 2238 / UL 2237
Rated current	20 A (With 2.5 mm <sup>2</sup> conductor cross section in accordance with IEC 61984)

### Mechanical properties

#### Mechanical data

Insertion/withdrawal cycles	500 (under rated load)
-----------------------------	------------------------

### Material specifications

Color (Housing)	black (RAL 9005)
-----------------	------------------

# CBC-PRC 3-FT25-MS6 800V - Panel feed-through



1453451

<https://www.phoenixcontact.com/gb/products/1453451>

Material Housing	PPE
------------------	-----

## Cable/line

Single wire, cross section	1.5 mm <sup>2</sup> 6 mm <sup>2</sup>
Stripping length of the individual wire	13 mm
Halogen-free	yes (in accordance with IEC 61249-2-21:2003- 11 Cl.3.1)

## Mounting

Mounting type	Rear mounting
Thread type	M25 x 1,5 ()

## Environmental and real-life conditions

### Ambient conditions

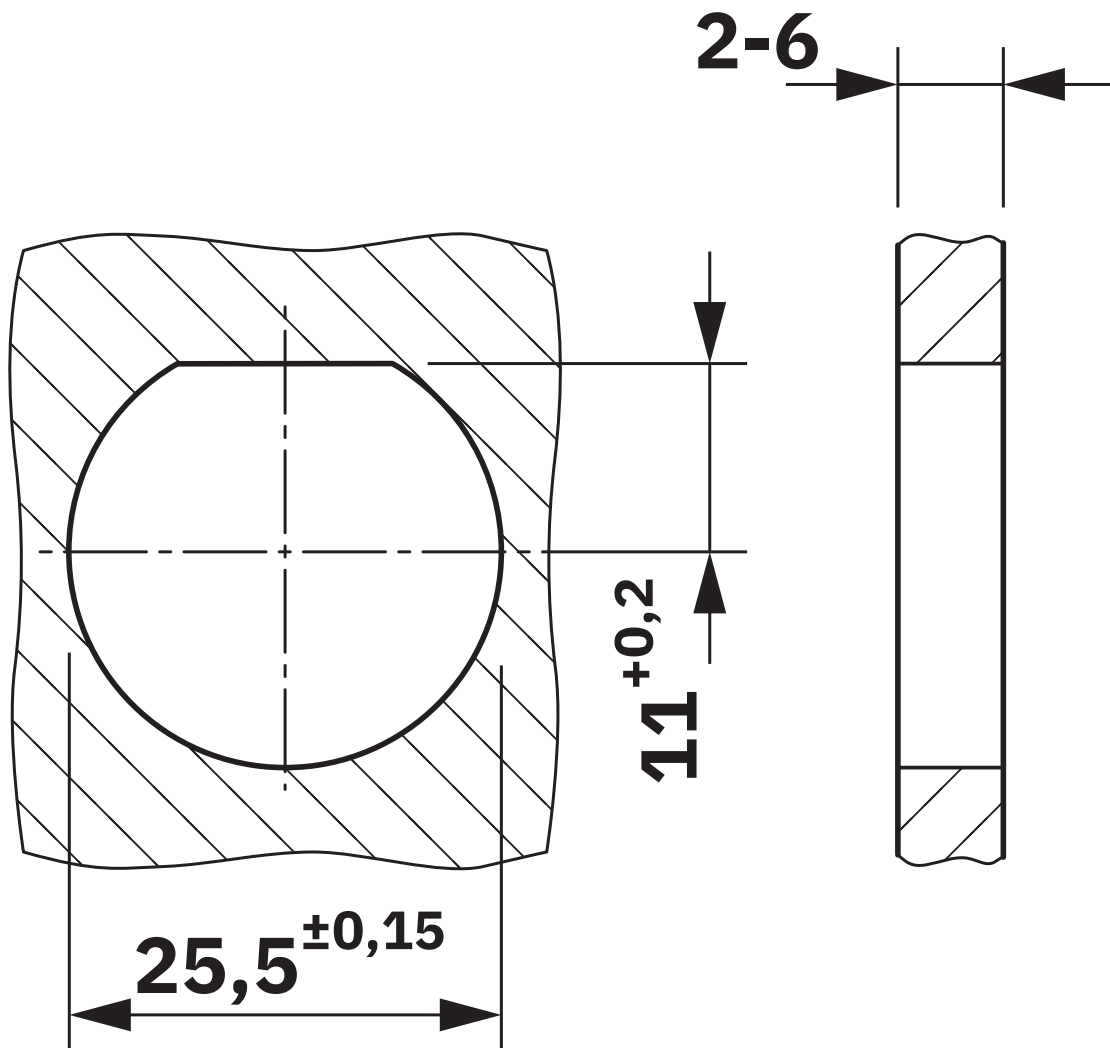
Degree of protection	IP66
	IP68 (2 m / 2 h)
	IP69
Ambient temperature (operation)	-40 °C ... 105 °C (observe derating)
Ambient temperature (storage/transport)	-40 °C ... 105 °C
Ambient temperature (assembly)	-20 °C ... 60 °C

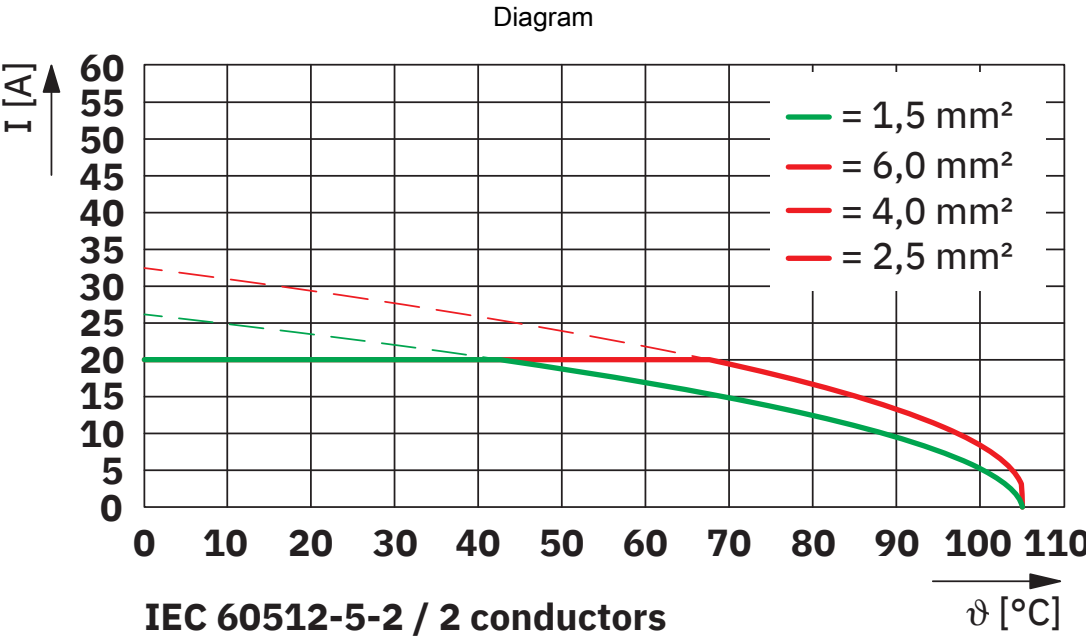
## Standards and regulations

Standards/specifications	IEC 61984
	IEC TS 62735-1

## Drawings

Dimensional drawing





Derating

# CBC-PRC 3-FT25-MS6 800V - Panel feed-through




1453451

<https://www.phoenixcontact.com/gb/products/1453451>

## Approvals

To download certificates, visit the product detail page: <https://www.phoenixcontact.com/gb/products/1453451>

	<b>VDE approval of drawings</b>			
	Approval ID: 304284-TL3-1			
	Nominal voltage $U_N$	Nominal current $I_N$	Cross section AWG	Cross section $\text{mm}^2$
	80 V	20 A	-	1.5 - 6

# CBC-PRC 3-FT25-MS6 800V - Panel feed-through



1453451

<https://www.phoenixcontact.com/gb/products/1453451>

## Classifications

### ECLASS

ECLASS-13.0	27440602
-------------	----------

### ETIM

ETIM 9.0	EC002566
----------	----------

# CBC-PRC 3-FT25-MS6 800V - Panel feed-through



1453451

<https://www.phoenixcontact.com/gb/products/1453451>

## Environmental product compliance

### EU RoHS

Fulfills EU RoHS substance requirements	Yes, No exemptions
-----------------------------------------	--------------------

### China RoHS

Environment friendly use period (EFUP)	EFUP-E
	No hazardous substances above the limits

### EU REACH SVHC

REACH candidate substance (CAS No.)	No substance above 0.1 wt%
-------------------------------------	----------------------------

Phoenix Contact 2025 © - all rights reserved  
<https://www.phoenixcontact.com>

PHOENIX CONTACT Ltd  
Halesfield 13, Telford  
Shropshire, TF7 4PG  
01952 681700  
[info@phoenixcontact.co.uk](mailto:info@phoenixcontact.co.uk)