

ELITE CLASSIC

WIRELESS ENERGY MONITOR

efergy®



SAVE UP TO 20% OFF
YOUR ENERGY BILL*



efergy®

MONITOR REDUCE SAVE



Instantly see the cost of using energy in your home



Mains powered with battery back up for portability



View your daily, weekly, monthly or average data



Uses multiple tariff options



Discover and reduce your carbon footprint



Learn about energy with your family



Tariff rates pre-programmed (or updated manually)

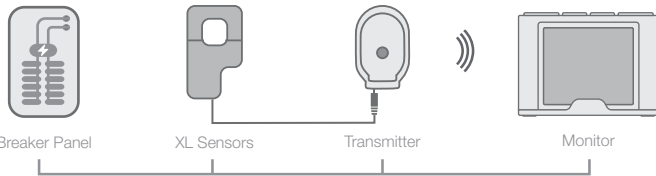
ELITE CLASSIC



WIRELESS ENERGY MONITOR

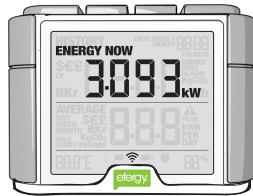
ENERGY MONITORS - HOW THEY WORK

Our **elite classic** electricity monitor is simple to install and easy to use. A mini CT sensor is clipped on to the live feed of your breaker panel. A lead from the sensor and a mains adaptor are plugged into the energy transmitter, which then wirelessly sends real time data to the energy monitor. The monitor converts the data and displays the demand in kilowatts of energy being consumed at any given time. The **elite classic** monitor may be programmed for various rates, ensuring that the cost of your energy is accurate.



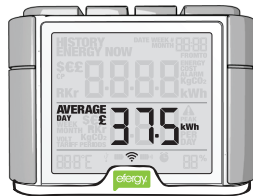
INSTANT SAVINGS

The **elite classic** updates every 6, 12 or 18 seconds. The display then shows how much energy is consumed at that given moment and how much it will cost if the 'energy now' load is maintained for a period of one day.



AVERAGE DATA

The **elite classic** displays your average energy usage per day, week and month. See the impact of your energy efficient efforts, and then watch your average energy usage reduce.



MEMORY FUNCTION

The **elite classic** memory function allows you to view your energy usage by the day, week or month. The elite helps you understand your energy usage and how it changes over time.



EASY TO INSTALL

- Clip the mini CT sensor around the live feed of your breaker panel
- Plug the sensor into the transmitter
- Press **link** on the back of the **elite classic** monitor
- Signal symbol will flash - press **learn** on the transmitter
- Signal symbol becomes solid when your monitor is working
- Use the **elite classic** to review energy usage instantly

TECHNICAL INFORMATION

Model Name	elite classic
Model Number	ELITE-4.0
Frequency	433MHz
Transmission Time	6, 12 or 18 Sec
Transmission Range	40 - 70m
Sensor Voltage Range	110 - 600V
Measuring Current	50mA - 90A
Accuracy	>90%

The backlight will be activated from 18:00 to 6:00 hours



N16354



- 1 x elite Wireless Energy Monitor
- 1 x Transmitter
- 1 x mini CT Sensor
- 1 x Mains Power Adaptors

MONITOR REDUCE SAVE