



ERX Brakes For Industrial Applications



SPRING-OPERATED ELECTRICALLY RELEASED ERX BRAKES

The ERX Brake range is a pre-assembled failsafe Electromagnetic brake which is used for parking and emergency braking.

The ERX Brake can be adapted to different application needs in speed, energy or torque, thanks to 3 different friction materials.

Beside the braking main function, the ERX Brake can be chosen with multiple options such as hand-lever release, enclosure protection, detection & redundancy or a combination of those.

Standard detection option, previously mechanical contact technology, is now contactless thanks to the new Warner Electric Sensor "WES".

Features

- Compact design with torque from 5 to 75 Nm
- Single or Double brake version
- Very easy installation
- Single voltage as standard
- For dry use
- Duty cycle : 100% energized
- Indoor application
- IP54 Option
- Non-Stick friction material



AVAILABLE OPTIONS

Hand-Lever

For manual releasing



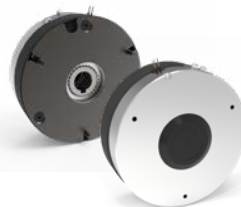
"WES"

For monitoring of brake state



Protection Kit

To prevent dust pollution



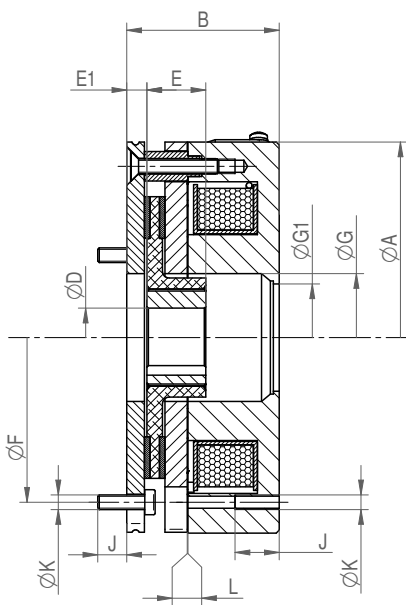
Double brake

For application where redundancy is required



Silent Option For quiet use

OVERALL DIMENSIONS



Brake	ØA [mm]	B [mm]	ØD H7 [mm]	E [mm]	E1 [mm]	ØF [mm]
ERX 05	86	53	12H7	18	5	72
ERX 10	98	54	15H7	20	6	90
ERX 20	133	52	20H7	20	7	112
ERX 35	153	52	25H7	25	7	132
ERX 60	164	58	30H7	30	4	145

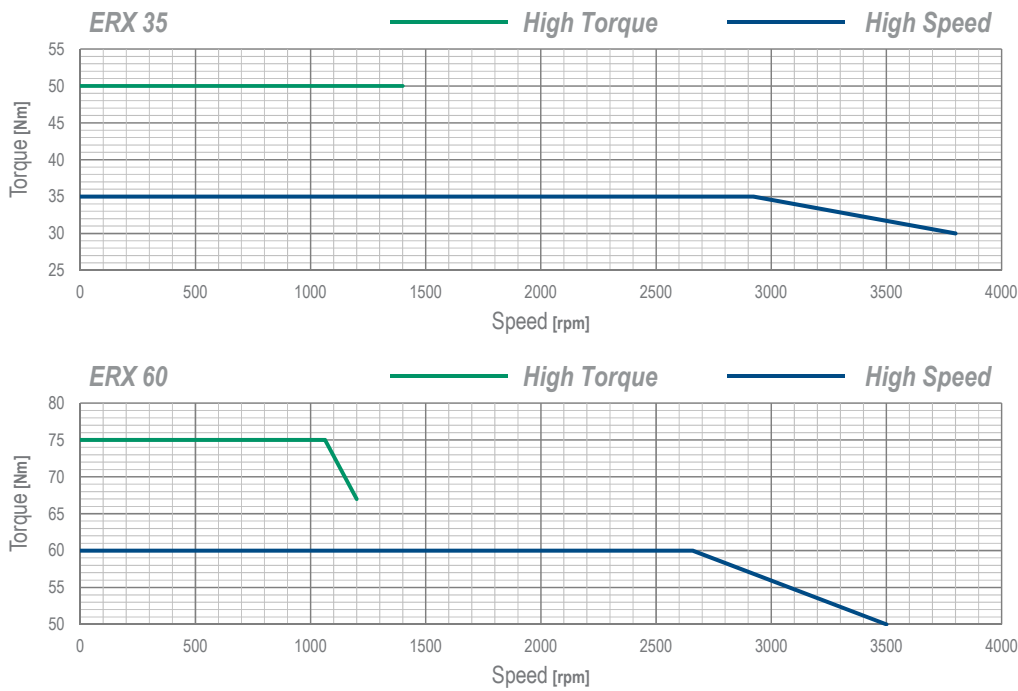
Brake	ØG [mm]	ØG1 [MM]	J [mm]	K [mm]	L ±0.1 [MM]	L Max. [mm]
ERX 05	26	25.5	10	3xM4	0.35	0.5
ERX 10	31	30.5	10	3xM5	0.35	0.5
ERX 20	43.5	36.5	10	3xM5	0.35	0.5
ERX 35	51	50.5	10	3xM6	0.35	0.5
ERX 60	59	52	14	3xM8	0.35	0.5

TORQUE OPTION

Brake	Standard		High Torque		High Speed	
	Nominal Torque	Max. Speed allowed	Nominal Torque	Max. Speed allowed	Nominal Torque	Max. Speed allowed
	[Nm]	[rpm]	[Nm]	[rpm]	[Nm]	[rpm]
ERX 05	5	5000	7.5	2500	5	7000
ERX 10	10	3500	15	2000	10	5500
ERX 20	20	3000	30	1700	20	4600
ERX 35	35	2500	50	1400	35	3800
ERX 60	60	2000	75	1200	60	3500

TORQUE VS. SPEED

For the standard version, the nominal torque is available on the full speed spectrum.
 For Size 05, 10 & 20 High torque and High speed versions, the nominal torque is available on the full speed spectrum.
 For Size 35 & 60, please see below the torque level over speed.



HOW TO ORDER WITH OUR CONFIGURATOR

ERX	-V	-F	-HB	-L	-P	-N	-D	-HS
Brake Size	Voltage (VDC)	Friction	Hub Bore	Lever Option	Cover Option	Silent Option	Double Option	WES Option
05	24	ST Standard	Specify Hub Bore Size in mm	0 No	0 No	0 No	0 No	0 No
10	103	HT High Torque		1 Yes	1 Yes	1 Yes	1 Yes	1 Yes
20	207	HS High Speed						
35								
60								

EXAMPLE:

ERX05-V024-FST-HB10-L1-P0-N0-D0-HS1

Brake Size 05, Voltage 24V with standard friction material, Hub bore diameter 10 with lever option and WES detection



Warner Electric Facilities

North America

USA

31 Industrial Park Road
New Hartford, CT 06057 - USA
860-379-1252

*Electromagnetic Clutches
and Brakes*

449 Gardner Street
South Beloit, IL 61080 - USA
815-389-3771

4578 East Park 30 Drive
Columbia City, IN 46725 - USA
260-244-6183

*Precision Electric Coils and
Electromagnetic Clutches and
Brakes*

Customer Service
1-800-825-6544

Application Support
1-800-825-9050

Europe

France

7, rue Champfleury, B.P. 20095
St Barthelemy d'Anjou - France
+33 (0)2 41 21 24 24

*Electromagnetic Clutches
and Brakes*

Customer Service
+33 (0)2 41 21 24 76

Application Support
+33 (0) 2 41 21 24 24

Asia Pacific

Australia

+61 2 9894 0133

China

+86 21 5169-9255

Hong Kong

+852 2615 9313

Singapore

+65 6487 4464

Taiwan

+886 2 2577 8156

Thailand

+66 2322 5527

The Brands of Altra Motion

Couplings

Ameridrives
www.ameridrives.com

Bibby Turboflex
www.bibbyturboflex.com

Guardian Couplings
www.guardiancouplings.com

Huco
www.huco.com

Lamiflex Couplings
www.lamiflexcouplings.com

Stromag
www.stromag.com

TB Wood's
www.tbwoods.com

Linear Systems

Thomson
www.thomsonlinear.com

Warner Linear
www.warnerlinear.com

Geared Cam Limit Switches

Stromag
www.stromag.com

Engineered Bearing Assemblies

Kilian
www.kilianbearings.com

Electric Clutches & Brakes

Matrix
www.matrix-international.com

Stromag
www.stromag.com

Warner Electric
www.warnerelectric.com

Deltran
www.thomsonlinear.com

Belted Drives

TB Wood's
www.tbwoods.com

Heavy Duty Clutches & Brakes

Twiflex
www.twiflex.com

Stromag
www.stromag.com

Svendborg Brakes
www.svendborg-brakes.com

Wichita Clutch
www.wichitaclutch.com

Gearing & Specialty Components

Bauer Gear Motor
www.bauergears.com

Boston Gear
www.bostongear.com

Delevan
www.delevan.com

Delroyd Worm Gear
www.delroyd.com

Nuttall Gear
www.nuttallgear.com

Engine Braking Systems

Jacobs Vehicle Systems
www.jacobsvehiclesystems.com

Precision Motors & Automation

Kollmorgen
www.kollmorgen.com

Miniature Motors

Portescap
www.portescap.com

Overrunning Clutches

Formsprag Clutch
www.formsprag.com

Marland Clutch
www.marland.com

Stieber
www.stieberclutch.com

Neither the accuracy nor completeness of the information contained in this publication is guaranteed by the company and may be subject to change in its sole discretion. The operating and performance characteristics of these products may vary depending on the application, installation, operating conditions and environmental factors. The company's terms and conditions of sale can be viewed at <http://www.altramotion.com/terms-and-conditions/sales-terms-and-conditions>. These terms and conditions apply to any person who may buy, acquire or use a product referred to herein, including any person who buys from a licensed distributor of these branded products.

©2019 by Warner Electric LLC. All rights reserved. All trademarks in this publication are the sole and exclusive property of Warner Electric LLC or one of its affiliated companies.