

EAO – Your Expert Partner for Human Machine Interfaces

84-902A - E-stop protective shroud

84-902A - E-stop protective shroud



Mounting

Mounting cut-out

Ø 22.5 mm

Other Attributes

Marking

NOT - AUS

Weight

0.006 kg

Dimension

Ø 50 mm

Material

Plastic

Colour

yellow

IP-Rating

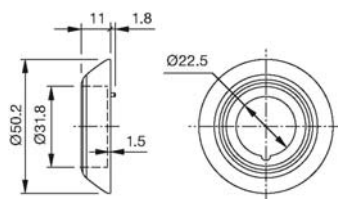
Front protection

IP 65

EAO – Your Expert Partner for Human Machine Interfaces

84-902A - E-stop protective shroud

Dimensions



Additional information

Front panel thickness 1 ... 3 mm

With anti-twist device

When using a protective shroud the e-stop or stop switch has to be turned by 180° to be mounted. See dimensional drawing