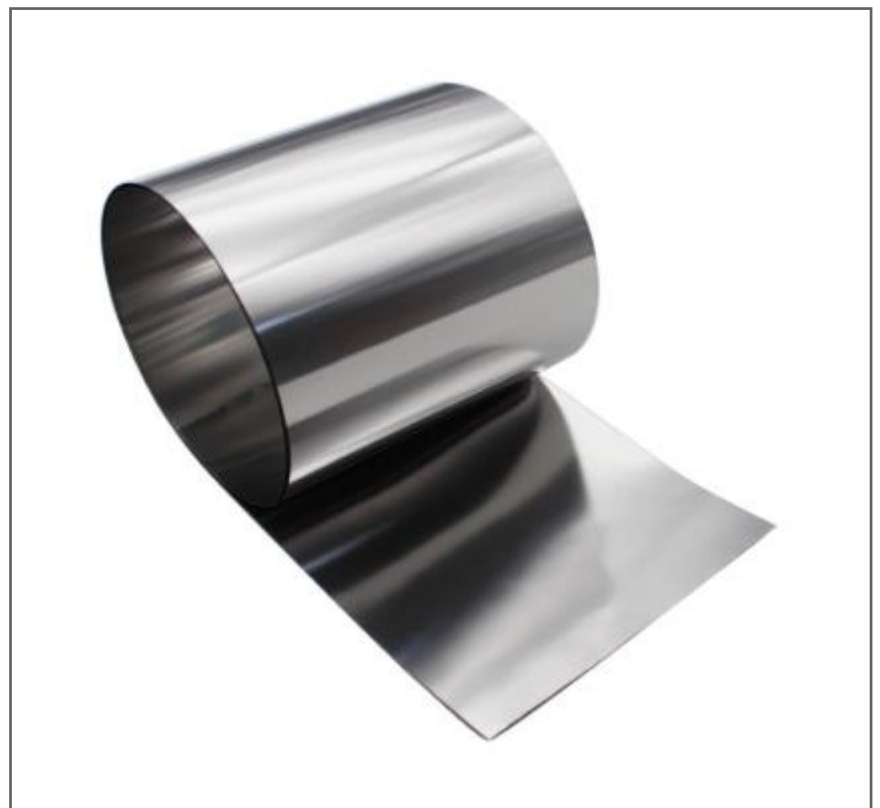


## Features

- **Packaging:** Supplied in a durable can in order to maintain the material's flatness and protect against corrosion.
- **Corrosion and rust resistant.** It offers high resistance to rust and corrosion, making it suitable for various industrial applications and harsh environments.
- **Durable** and long-lasting.
- Suitable for **precision adjustments** and alignment in machinery, tool and die set up, and machine repair/maintenance.
- Offers good resistance to oxidation in continuous service up to approximately 1600°F (871°C). However, exposure to high temperatures (above 400°C) will remove the benefits of the cold working, returning it to properties similar to an annealed state.

## RS PRO STAINLESS (SHIM IN A CAN) L:1250MM X W:150MM X T:0.15MM

RS Stock No: 0767816



RS PRO is the own brand of RS. The RS PRO Seal of Approval is your assurance of professional quality, a guarantee that every part is rigorously tested, inspected, and audited against demanding standards. Making RS PRO the Smart Choice for our customers.

## Product Description

### *RS PRO Precision Stainless Steel "Shim in a Can"*

*RS PRO Precision Stainless Steel "Shim in a Can" is a full hard, cold-rolled Type 300 series stainless steel material known for its excellent corrosion resistance and high tensile strength. The shim is supplied as a single sheet but is typically supplied in a can for ease of storage.*

#### **Key Features:**

- **Material Grade:** *Stainless Steel Type 300 Series Full Hard (equivalent to AISI-T301, meeting AMS 5519 and ASTM A666 specifications).*
- **Temper:** *Full Hard condition, achieved through cold working rather than heat treatment.*
- **High Strength:** *Known for its high ultimate tensile strength and yield strength, ideal for applications requiring robust materials.*
- **Hardness:** *Rockwell Hardness C40-45.*

#### **Applications:**

- *Level surfaces in industrial and mechanical applications.*
- *Aligning and levelling pumps, motors, and other heavy machinery.*
- *Spacing for fasteners and securing bolts in construction.*
- *Adjusting tool and die sets during manufacturing.*
- *Machine Repair - Used to fill small gaps*

## General Specifications

|                 |                                           |
|-----------------|-------------------------------------------|
| <b>Material</b> | Stainless Steel Type 300 Series Full Hard |
| <b>Form</b>     | Shim in a Can                             |

|                  |        |
|------------------|--------|
| <b>Length</b>    | 1250MM |
| <b>Width</b>     | 150MM  |
| <b>Thickness</b> | 0.15MM |

### Mechanical Properties

|                             |                               |
|-----------------------------|-------------------------------|
| <b>Tensile Strength</b>     | 170,000 psi minimum           |
| <b>Hardness</b>             | Rockwell Hardness C40-45      |
| <b>Density</b>              | 7.9 to 8.03 g/cm <sup>3</sup> |
| <b>Yield Strength</b>       | 140,000 psi minimum           |
| <b>Thermal Conductivity</b> | ~51.9 W/m·K                   |
| <b>Elongation in 2"</b>     | 2% min                        |

### Approvals

|                                  |                                      |
|----------------------------------|--------------------------------------|
| <b>Compliance/Certifications</b> | SAE-30302, AISI-T302, and ASTM A-666 |
|----------------------------------|--------------------------------------|

### Similar Products

| RS Code | Form     | Thickness                                                      |
|---------|----------|----------------------------------------------------------------|
| 0767807 | CAN      | 0.10MM                                                         |
| 0767808 | CAN      | 0.20MM                                                         |
| 0767809 | ASSORTED | 0.05MM, 0.10MM, 0.15MM, 0.20MM, 0.25MM, 0.30MM, 0.40MM, 0.50MM |
| 0767811 | CAN      | 0.30MM                                                         |
| 0767812 | BOX      | 0.50MM                                                         |
| 0767813 | CAN      | 0.05MM                                                         |
| 0767814 | CAN      | 0.25MM                                                         |
| 0767815 | BOX      | 0.40MM                                                         |
| 0767817 | BOX      | 0.80MM                                                         |
| 0767818 | BOX      | 0.65MM                                                         |
| 0767819 | CAN      | 0.010"                                                         |
| 0767820 | CAN      | 0.003"                                                         |
| 0767821 | CAN      | 0.005"                                                         |
| 0767822 | CAN      | 0.002"                                                         |
| 0767823 | ASSORTED | 0.001", 0.002", 0.003", 0.005", 0.008", 0.010", 0.015", 0.020" |

|         |     |        |
|---------|-----|--------|
| 0767824 | CAN | 0.008" |
| 0767825 | BOX | 0.015" |
| 0767827 | CAN | 0.004" |
| 0767828 | BOX | 0.020" |
| 0767806 | CAN | 0.001" |