



Switches > Push Button Switches



Configuration (Pole-Throw): **Single Pole - Double Throw**

Number of Actuators: **Single**

Actuator Profile: **Extended**

Bushing Style: **Threaded**

Bushing Thread Size: **1/4-40**

Features

Product Type Features

Switch Connection Type	Printed Circuit
Illuminated	Without
Actuator Style	Cap Actuator - Order Separately

Configuration Features

Panel Cutout Size	6.5 (Diameter) mm[.256 in]
Configuration (Pole-Throw)	Single Pole - Double Throw
Number of Actuators	Single
Snap Action	With
Switch Feedback Type	Non-Tactile
Operating Function	On On

Electrical Characteristics

Contact Current Rating	.06 A
Operating Voltage Range	30 VDC

Body Features

Case Material	Epoxy Resin
Sealing Method	Epoxy
Actuator Material	Nickel-Plated Copper Alloy
Product Orientation	Vertical
Actuator Force	400 g[14.11 oz]



Actuator Profile	Extended
Bushing Style	Threaded
Bushing Thread Size	1/4-40
Actuator Color	Natural

Contact Features

Contact Base Material	Brass
Switch Contact Plating Material	Gold

Mechanical Attachment

Attachment Method	Screw-On
-------------------	----------

Housing Features

Low Profile	No
Process Sealed	No

Dimensions

Button Width	2.8 mm[.11 in]
Cap Diameter	10.01 mm[.394 in]
Bushing Length	8 mm[.315 in]
Actuator Length	8 mm[.315 in]

Packaging Features

Packaging Method	Bulk
------------------	------

Product Compliance

For compliance documentation, visit the product page on TE.com>

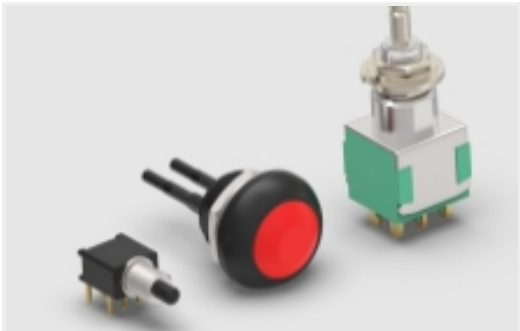
EU RoHS Directive 2011/65/EU	Not Yet Reviewed
EU ELV Directive 2000/53/EC	Not Yet Reviewed
China RoHS 2 Directive MIIT Order No 32, 2016	No Restricted Materials Above Threshold
EU REACH Regulation (EC) No. 1907/2006	Current ECHA Candidate List: JAN 2025 (247) Candidate List Declared Against: JUN 2016 (169) SVHC > Threshold: Not Yet Reviewed
Halogen Content	Low Halogen - Br, Cl, F, I < 900 ppm per homogenous material. Also BFR/CFR/PVC Free
Solder Process Capability	Wave solder capable to 265°C



Product Compliance Disclaimer

This information is provided based on reasonable inquiry of our suppliers and represents our current actual knowledge based on the information they provided. This information is subject to change. The part numbers that TE has identified as EU RoHS compliant have a maximum concentration of 0.1% by weight in homogenous materials for lead, hexavalent chromium, mercury, PBB, PBDE, DBP, BBP, DEHP, DIBP, and 0.01% for cadmium, or qualify for an exemption to these limits as defined in the Annexes of Directive 2011/65/EU (RoHS2). Finished electrical and electronic equipment products will be CE marked as required by Directive 2011/65/EU. Components may not be CE marked. Additionally, the part numbers that TE has identified as EU ELV compliant have a maximum concentration of 0.1% by weight in homogenous materials for lead, hexavalent chromium, and mercury, and 0.01% for cadmium, or qualify for an exemption to these limits as defined in the Annexes of Directive 2000/53/EC (ELV). Regarding the REACH Regulations, TE’s information on SVHC in articles for this part number is still based on the European Chemical Agency (ECHA) ‘Guidance on requirements for substances in articles’(Version: 2, April 2011), applying the 0.1% weight on weight concentration threshold at the finished product level. TE is aware of the European Court of Justice ruling of September 10th, 2015 also known as O5A (Once An Article Always An Article) stating that, in case of ‘complex object’, the threshold for a SVHC must be applied to both the product as a whole and simultaneously to each of the articles forming part of its composition. TE has evaluated this ruling based on the new ECHA “Guidance on requirements for substances in articles” (June 2017, version 4.0) and will be updating its statements accordingly.

Also in the Series | **Alcoswitch Blue Series**



General Purpose Push Button Switches (7)



Push Button Switches(7)

Customers Also Bought



TE Part #ZPF000000000004900
901-21 B 61



TE Part #2344655-6
PCB ANT, MHF 4, 100mm, Wi-Fi TRIPLE BAND



TE Part #1761682-6
IDC LOW PRO HDR 16P RA HT BLACK



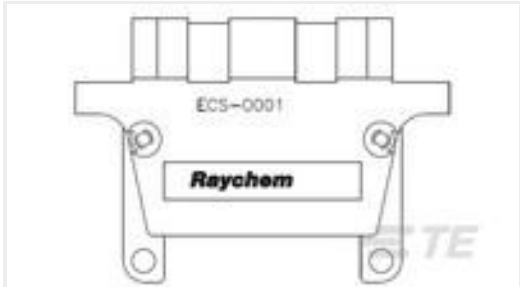
TE Part #2-2205132-5
CA MINI IO MINI IO TYPE II



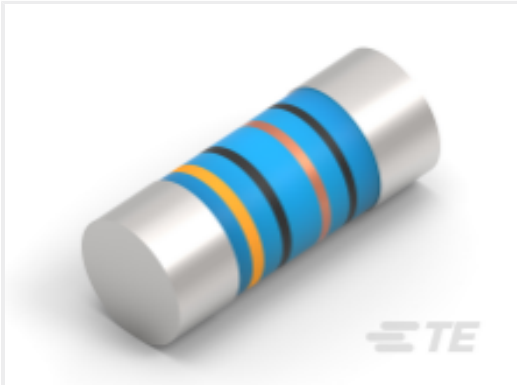
TE Part #709663-1
CE 10-70 A D9 CE 10-70 A



TE Part #ZPF0000000000024823
901-26 R 61-0 PN



TE Part #184437-000
ECS-0001



TE Part #1-2176335-0
MELF SMA-A 62R 1% 50PPM 0102 0.3 W



Documents

Product Drawings

MPS1004DPC PSHBTN 0.4VA SPDT

English

Datasheets & Catalog Pages

8-177346-1_ALCOSWITCH_BLUE_PUSHBUTTON

English