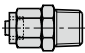


## One-touch fittings—threaded type

### Ordering code

BKC 06 04 - 01 □

① ② ③ ④ ⑤

① Model	② Tubing outer diameter	③ Tubing inner diameter	④ Thread connection	⑤ Thread type
BKC: Straight locknut connector 	04 : Φ4mm 06 : Φ6mm 08 : Φ8mm 10 : Φ10mm 12 : Φ12mm	25 : Φ2.5mm 04 : Φ4mm 05 : Φ5mm 06 : Φ6mm 65 : Φ6.5mm 75 : Φ7.5mm 08 : Φ8mm 09 : Φ9mm	M3 : M3X0.5 M5 : M5X0.8 01 : 1/8" 02 : 1/4" 03 : 3/8" 04 : 1/2"	Blank: PT

Note: When using the tubing Φ8×Φ5.5, the straight lock nut connector of BKC0806 can be used.

### Specification

Operating pressure range	0~10kgf/cm <sup>2</sup> (0~1.0MPa)
Negative pressure	-750mmHg(10Torr)
Proof pressure	3.0MPa
Ambient and fluid temperature (°C)	0~150

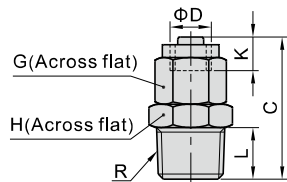
Note: The temperature resistance level of the tubing should be confirmed first when used in high temperature environments.

### Product feature

1. Variable models can be widely used in every kind of pneumatic systems.
2. High circulation performance bear the same flow with the volume of the tube inner diameter.
3. The nickel plated body is anti-corrosion and anti-pollution, which allows a broader application.
4. Metal fittings can be used in high temperature environments.

### Dimensions

#### BKC Series



Model/Item	Tubing diameterΦD		R	L	C	K	G	H	Weight(g)	Model/Item	Tubing diameterΦD		R	L	C	K	G	H	Weight(g)													
	O.D	I.D									O.D	I.D																				
BKC0425-M3	4	2.5	M3×0.5	3	17	5	8	8	4.4	BKC1065-02	10	6.5	1/4"	10	30	7.5	15	15	25.3													
BKC0425-M5			M5×0.8	3.5	17.5					3/8"			11	31.5	17					29.1												
BKC0425-01			1/8"	7.5	20.5					1/2"			14	35.5	21					44												
BKC0604-01	6	4	1/8"	7.5	22	10	9.9	10	9.9	BKC1075-02			7.5	8	1/4"					10	30	7.5	17	24.1	28.9							
BKC0604-02			1/4"	10	25.5					3/8"					11					31.5	17					28.9						
BKC0604-03			3/8"	11	27					1/2"					14					35.5	21					43.6						
BKC0805-01	8	5	1/8"	7.5	24	6.5	12	12	12.8	BKC1208-02	12	8			1/4"	10	30	7.5	17	30.5	32.1											
BKC0805-02			1/4"	10	27.5					3/8"					11	31.5	17									32.1						
BKC0805-03			3/8"	11	29					1/2"					14	35.5	21									46.7						
BKC0806-01			5.5 or 6	1/8"	7.5					24			14	13.1	12	13.1	BKC1209-02					10	9	1/4"	10	30	7.5	17	30.6	31.9		
BKC0806-02					1/4"					10							27.5							3/8"	11	31.5					17	31.9
BKC0806-03					3/8"					11							29							1/2"	14	35.5					21	46.4

### Installation and application

1. Method of inserting or removal a tubing
  - 1.1 Inserting a tubing  
Place the locking cap over the tubing, and insert the tubing into the body, then tighten the locking cap. (As figure 1)
  - 1.2 Removing a tubing  
Loosen the locking cap first, then remove the tubing. (As figure 2)
2. Method of tightening the connector thread  
Tighten the connector with a hex wrench, as shown right.

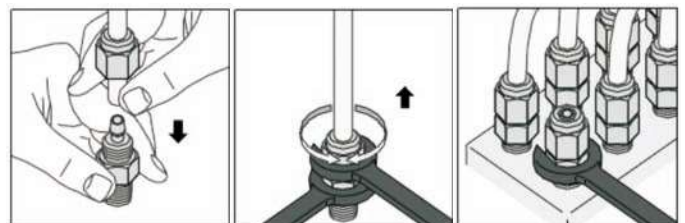


Figure 1

Figure 2

Figure 3