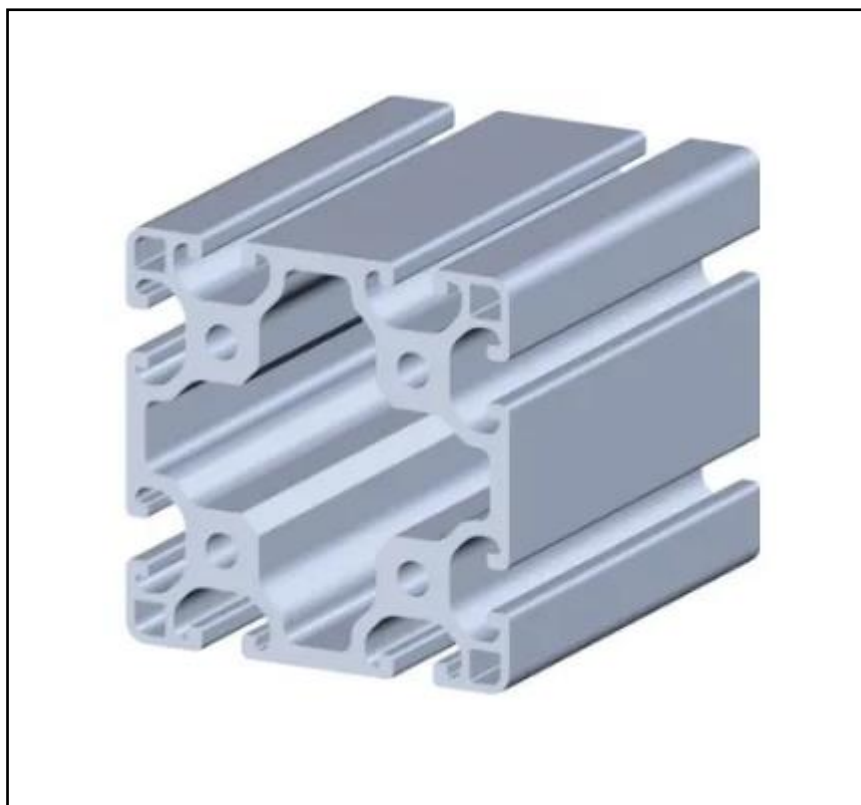


## FEATURES

- Light-weight aluminium alloy
- Suitable for cut to length applications
- Structural element type: Strut profile
- Compatible with support and connector accessories

## RS PRO Strut, 80 x 80 mm, 8mm Groove, 2000mm Length

RS Stock No.: 850-8505



RS Professionally Approved Products bring to you professional quality parts across all product categories. Our product range has been tested by engineers and provides a comparable quality to the leading brands without paying a premium price.

## Product Description

RS Pro Structural System 80mm x 80mm Profile 8 element, available in 2m ([850-8505](#)) and 3m ([850-8509](#)) lengths, compatible with Item Profile 8 range. RS PRO Structural System Profiles, compatible with Item Profile 5, Profile 6 and Profile 8, are suitable for general workplace furniture system construction, offering strong, light-weight, easily interchangeable elements in a variety of profile types

This range includes the following Aluminium Alloy Struts:  
[850-8505](#) - 8mm Groove, 2000mm Length, Series Profile 8  
[850-8509](#) - 8mm Groove, 3000mm Length, Series Profile 8

## General Specifications

<b>Structural Element Type</b>	Strut Profile
<b>Number of Grooves</b>	8
<b>Material</b>	Aluminium
<b>Applications</b>	Construction, Industrial equipment, Automotive manufacturing, Plumbing

## Mechanical Specifications

<b>Strut Profile</b>	80mm x 80mm
<b>Length</b>	2000mm
<b>Groove Size</b>	8mm
<b>Mass (G)</b>	5.33kg/m
<b>Moment of Inertia (I<sub>2</sub>)</b>	134.90cm <sup>4</sup>
<b>Section Modulus (W<sub>x</sub>)</b>	33.72 cm <sup>3</sup>

## Compatible Accessories for Groove

Stock No.	Items
<u>767-5601</u> , <u>767-5604</u> , <u>767-5608</u>	End Caps
<u>767-5695</u> , <u>767-5718</u> , <u>767-5737</u> , <u>767-5715</u> , <u>767-5761</u> , <u>767-5692</u> , <u>767-5721</u> , <u>767-5709</u> , <u>767-5702</u>	Connector Bracket and Joint
<u>767-5727</u>	Floor Bracket
<u>767-5645</u> , <u>767-5642</u> , <u>767-5654</u> , <u>767-5667</u> , <u>767-5648</u> , <u>767-5651</u> , <u>767-5658</u> , <u>767-5660</u> , <u>767-5664</u> , <u>767-5673</u> , <u>767-5636</u>	T-Slot Nut
<u>767-5822</u> , <u>767-5686</u> , <u>767-5689</u>	Screws
<u>767-5711</u>	Cube Connector
<u>767-5730</u> , <u>767-5670</u> , <u>767-5676</u>	Universal Connector
<u>767-5686</u> , <u>767-5682</u>	T-Matic Connector
<u>767-5689</u>	Screw connector
<u>767-5695</u> , <u>767-5698</u>	Connection Angle
<u>767-5743</u>	Roller

