

# Amphenol

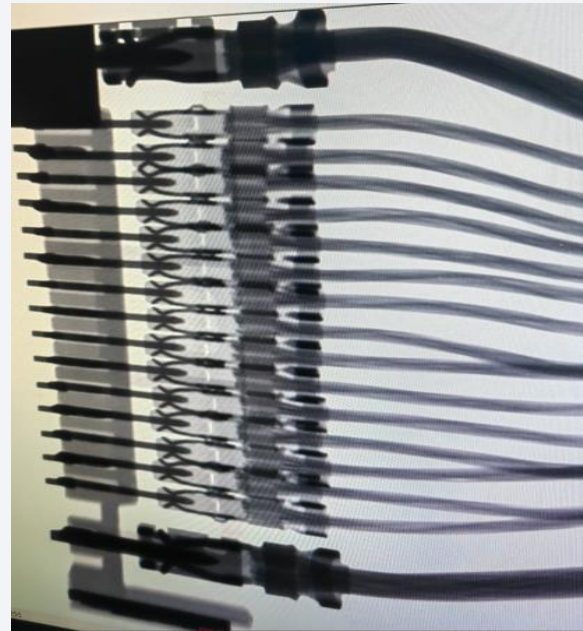
COMMUNICATIONS SOLUTIONS

## ComboLock Receptacle Modification

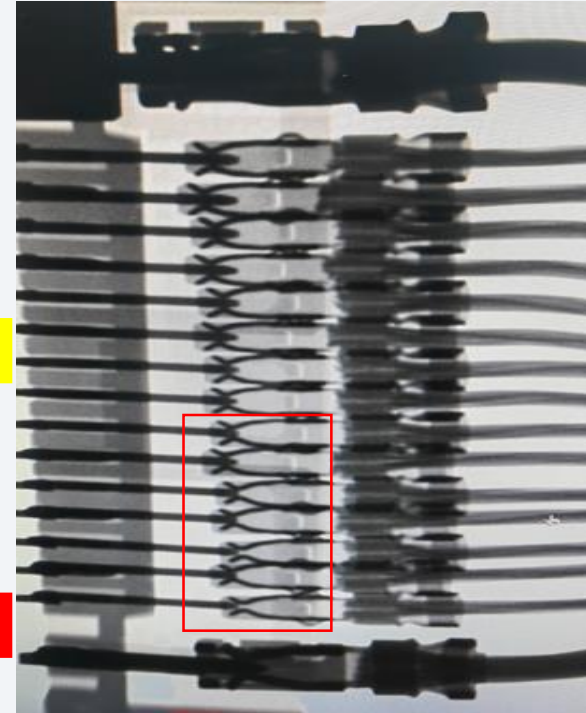
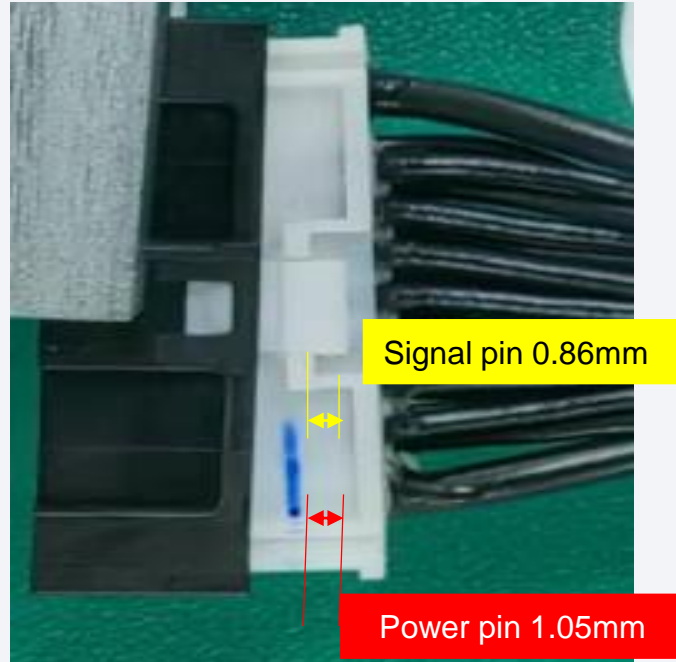
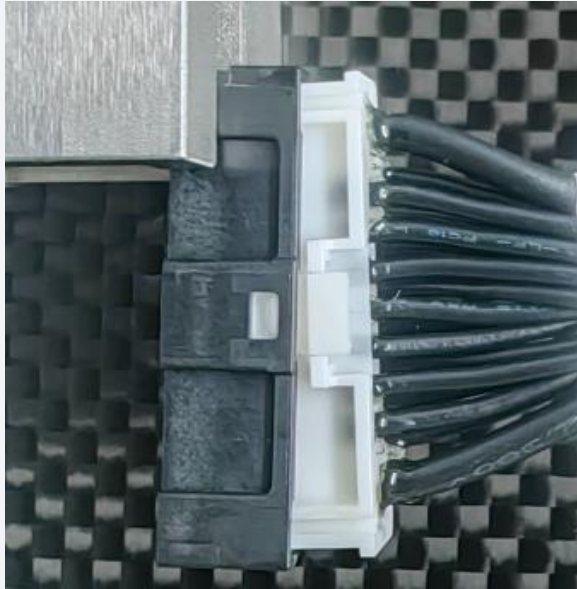
*Date Initiated: 3<sup>rd</sup> Mar 2025*

*Prepared by: Jeffrey*

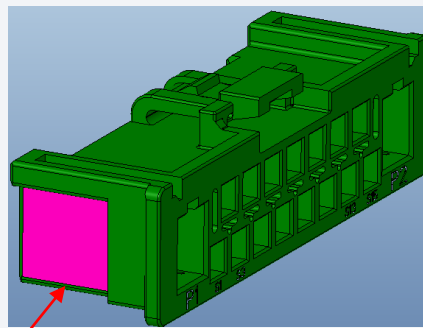
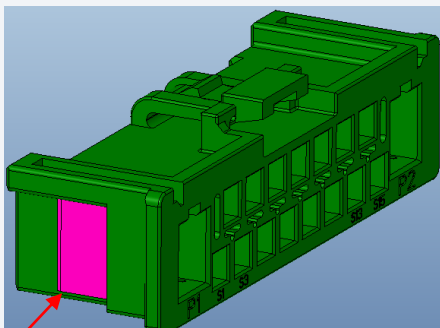
The terminal connect is well under x-ray when the male connector and female connector normal mating



The terminal is disconnect under x-ray when the male connector and female connector skewed mating



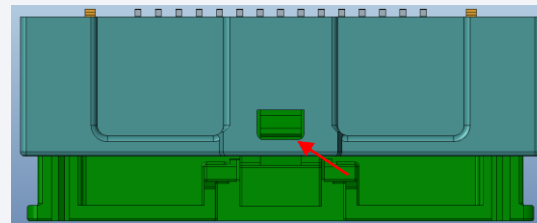
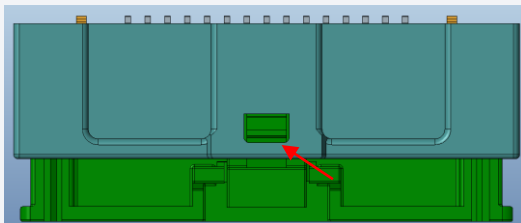
## Prevent rotation



Improvement completed on November 20th, with good results, can prevent rotation

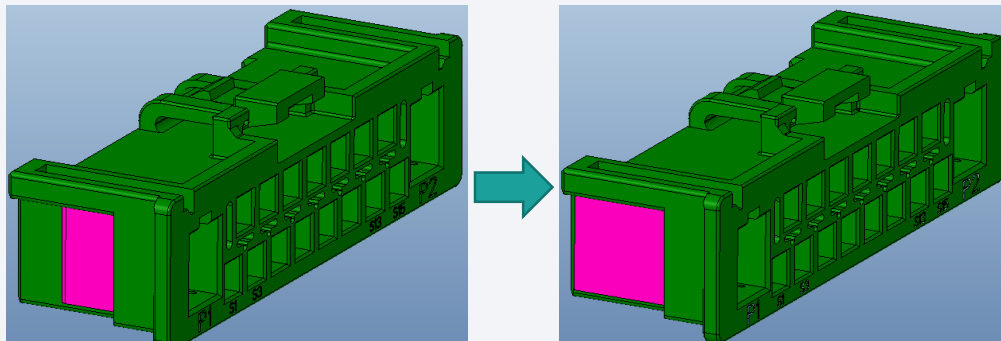
Increase interference to reduce its rotatable range

## Prevent retreat

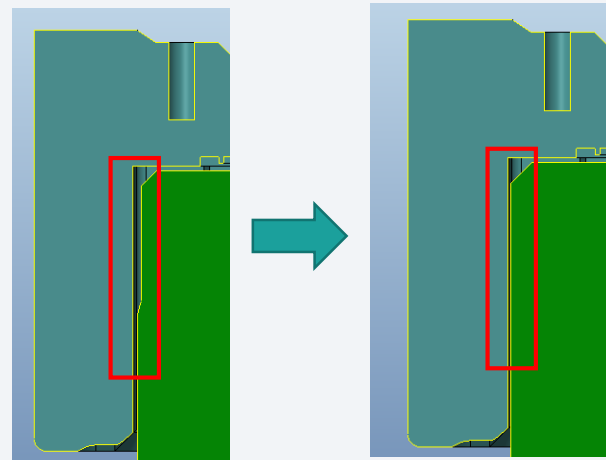
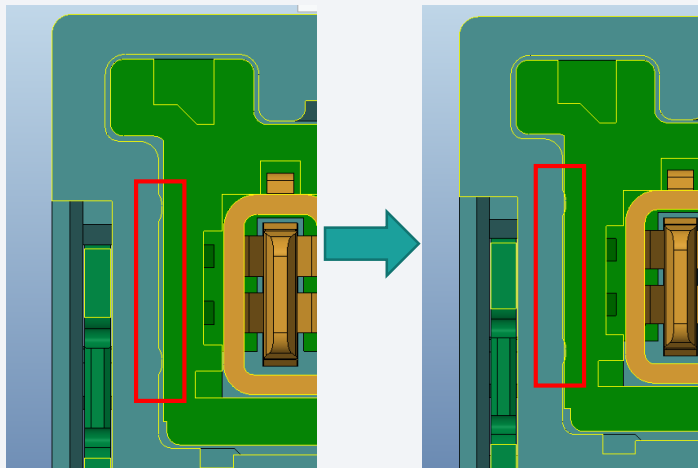


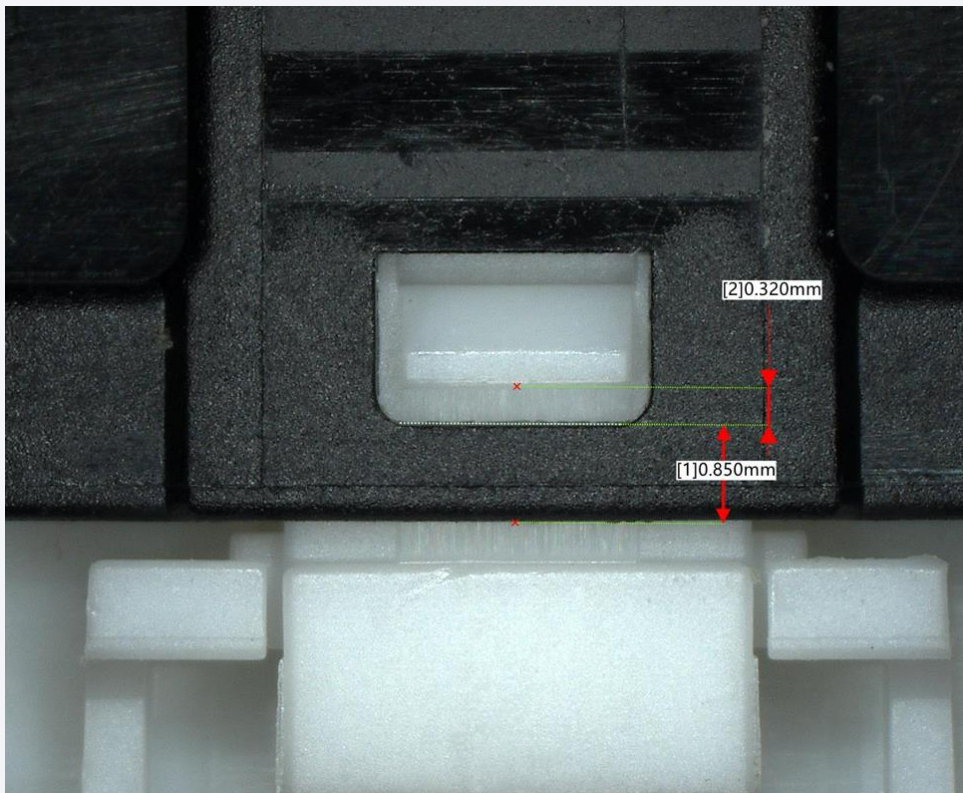
Expected to be completed on November 2nd

Move the hook of latch , reduce the gap between the hook and the hole , to prevent the receptacle from retreating too much



Add resin 0.05mm  
The gap from 0.02mm to -0.03mm

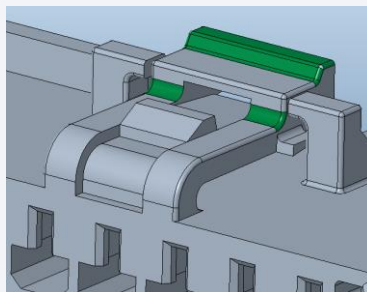
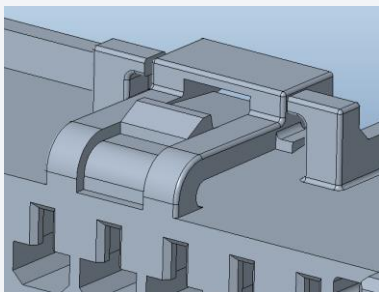




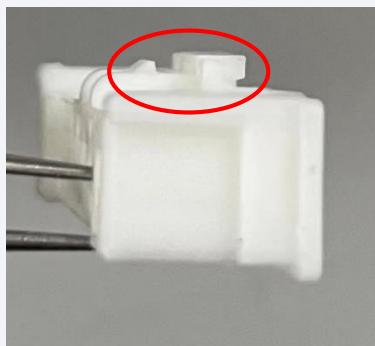
Current Status: GAP 0.32mm

Adding 0.15mm resin,  
can reduce the gap to 0.17mm

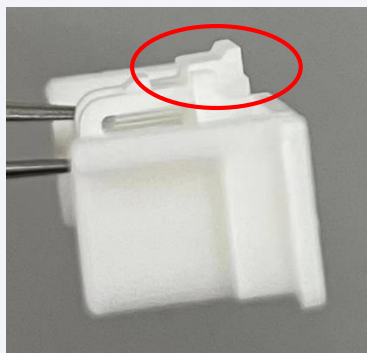
In other words,  
Can increase the wipe length 0.15mm



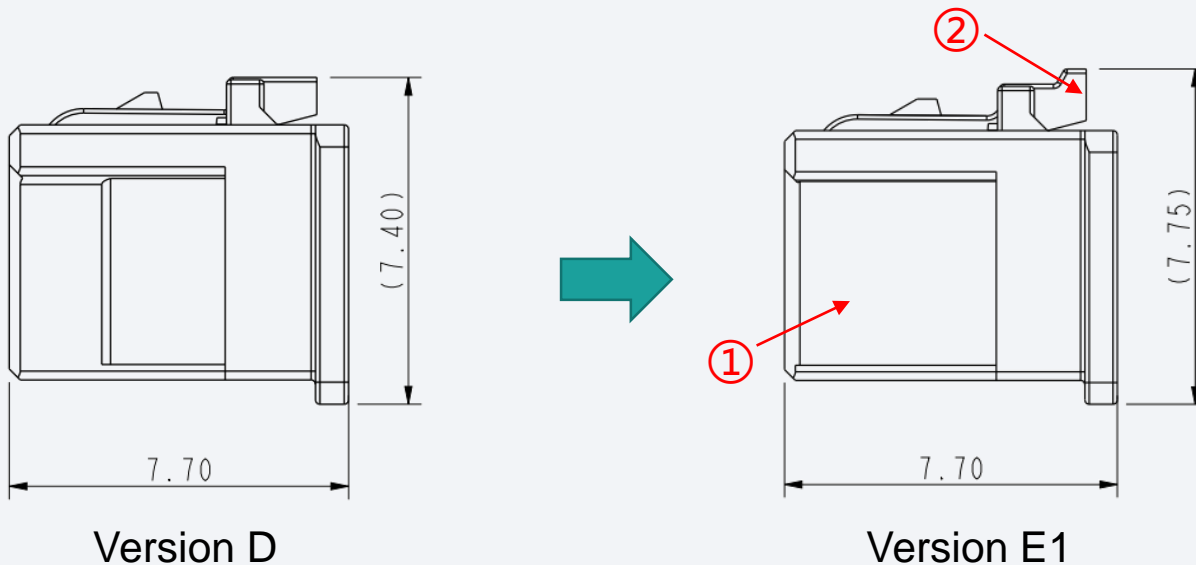
Added a Convex platform on  
the latch (Marked in green)  
For easy to press



Old



Optimize



- ① Increase interference to reduce its rotatable range
- ② Add a convex platform on the latch for easy to press

The background of the slide is a dark teal color with a complex, abstract network pattern. This pattern consists of numerous small, light blue dots connected by thin, light blue lines, creating a web-like structure that resembles a molecular or digital network. The density of the dots and lines is higher in the upper right and lower right areas, while the lower left area is slightly less dense.

# Thanks

**Amphenol**  
COMMUNICATIONS SOLUTIONS