



Designers' Choice

INTERCONNECT BATTERY HOLDERS

ALUMINUM HOLDERS CONNECTED IN SERIES

ELIMINATES WIRING • LABOR SAVING

Features pre-connected jumper strap insulated from the Aluminum base. Batteries held in series circuit without need of additional wiring.

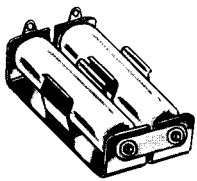


FIG. 2

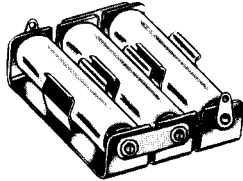


FIG. 3

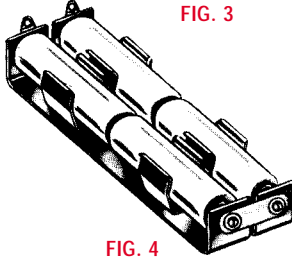


FIG. 4

CAT. NO.	HOLDS NO. OF CELLS	FIG. NO.	BATTERY CROSS REFERENCE			
			EVEREADY	DURACELL	RAY-O-VAC	NEDA
All Batteries listed within boxes are in the same size group						
"AA" CELL HOLDERS (BATTERY SIZE $\frac{.531}{.565}$ O.D. \times $\frac{1.906}{1.988}$ H)						
146	2	2	E9, EV15,	ZM9, RM12R, NC15AA,	5AA,	15, 15A, 15C, 15D, 15F,
147	3	3	EN91, CH15, E133,	M15F, M15AA, TR133R,	615,	15M, 15NC, 221, 1101M,
148	4	4	E133N, E177, 505,	TR177, M505, MN1500,	815, 7AA	1113M, 1306AP, 1306M,
			523, 1015, 1215	PC1500		1314M, 1606M
"C" CELL HOLDERS (BATTERY SIZE $\frac{.875}{1.125}$ O.D. \times $\frac{1.875}{1.969}$ H)						
149	2	2	CH35,	M14F, M14HD,	1C,	14A, 14C,
150	3	3	E93, 935,	NC14C, TR286,	614,	14D, 14F,
151	4	4	1235, EV35,	MN1400, PC1400	814	14NC, 1600M
			EN93			
"D" CELL HOLDERS (BATTERY SIZE $\frac{1.187}{1.375}$ O.D. \times $\frac{2.312}{2.412}$ H)						
152	2	2	CH50,	M13F, NC13D,	2D,	13A, 13C,
153	3	3	E95, 950,	S42, M13HD,	6D, 613,	13D, 13F,
158	4	4	1250, EV50,	TR289, MN1300,	813	13NC, 1115M,
			EN95	PC1300		1810M

ALUMINUM HOLDERS WITH PC LUGS

ELIMINATES WIRING • LABOR SAVING

For printed circuitry we have standardized our most popular holders with PC Lugs. Choice of single or multiple holders "AA" and "C" assembled with Cat. No. 4002 lug. "D" assembled with Cat. No. 4003 lug.

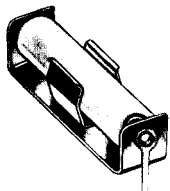


FIG. 1

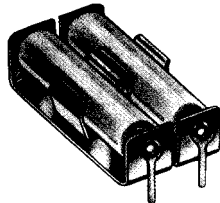


FIG. 2

CAT. NO.	HOLDS NO. OF CELLS	FIG. NO.	BATTERY CROSS REFERENCE			
			EVEREADY	DURACELL	RAY-O-VAC	NEDA
All Batteries listed within boxes are in the same size group						
"AA" CELL HOLDERS (BATTERY SIZE $\frac{.531}{.565}$ O.D. \times $\frac{1.906}{1.988}$ H)						
2222	1	1	E9, EV15,	ZM9, RM12R, NC15AA,	5AA,	15, 15A, 15C, 15D, 15F,
2223	2	2	EN91, CH15, E133,	M15F, M15AA, TR133R,	615,	15M, 15NC, 221, 1101M,
			E133N, E177, 505,	TR177, M505, MN1500,	815, 7AA	1113M, 1306AP, 1306M,
			523, 1015, 1215	PC1500		1314M, 1606M
"C" CELL HOLDERS (BATTERY SIZE $\frac{.875}{1.125}$ O.D. \times $\frac{1.875}{1.969}$ H)						
2224	1	1	CH35,	M14F, M14HD,	1C,	14A, 14C,
2225	2	2	E93, 935,	NC14C, TR286,	614,	14D, 14F,
			1235, EV35,	MN1400, PC1400	814	14NC, 1600M
			EN93			
"D" CELL HOLDERS (BATTERY SIZE $\frac{1.187}{1.375}$ O.D. \times $\frac{2.312}{2.412}$ H)						
2226	1	1	CH50,	M13F, NC13D,	2D,	13A, 13C,
2227	2	2	E95, 950,	S42, M13HD,	6D, 613,	13D, 13F,
			1250, EV50,	TR289, MN1300,	813	13NC, 1115M,
			EN95	PC1300		1810M

STEEL HOLDERS WITH PC LUGS

ELIMINATES WIRING • LABOR SAVING

For printed circuitry we have standardized our most popular holders with PC Lugs. Choice of single or multiple holders "AA" and "C" assembled with Cat. No. 4002 lug. "D" assembled with Cat. No. 4003 lug.



FIG. 3

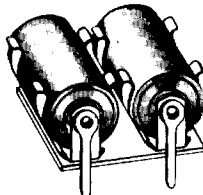


FIG. 4

CAT. NO.	HOLDS NO. OF CELLS	FIG. NO.	BATTERY CROSS REFERENCE			
			EVEREADY	DURACELL	RAY-O-VAC	NEDA
All Batteries listed within boxes are in the same size group						
"AA" CELL HOLDERS (BATTERY SIZE $\frac{.531}{.565}$ O.D. \times $\frac{1.906}{1.988}$ H)						
2228	1	3	E9, EV15,	ZM9, RM12R, NC15AA,	5AA,	15, 15A, 15C, 15D, 15F,
2229	2	4	EN91, CH15, E133,	M15F, M15AA, TR133R,	615,	15M, 15NC, 221, 1101M,
			E133N, E177, 505,	TR177, M505, MN1500,	815, 7AA	1113M, 1306AP, 1306M,
			523, 1015, 1215	PC1500		1314M, 1606M
"C" CELL HOLDERS (BATTERY SIZE $\frac{.875}{1.125}$ O.D. \times $\frac{1.875}{1.969}$ H)						
2230	1	3	CH35,	M14F, M14HD,	1C,	14A, 14C,
2231	2	4	E93, 935,	NC14C, TR286,	614,	14D, 14F,
			1235, EV35,	MN1400, PC1400	814	14NC, 1600M
			EN93			
"D" CELL HOLDERS (BATTERY SIZE $\frac{1.187}{1.375}$ O.D. \times $\frac{2.312}{2.412}$ H)						
2232	1	3	CH50,	M13F, NC13D,	2D,	13A, 13C,
2233	2	4	E95, 950,	S42, M13HD,	6D, 613,	13D, 13F,
			1250, EV50,	TR289, MN1300,	813	13NC, 1115M,
			EN95	PC1300		1810M