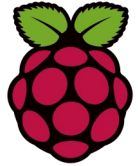


Raspberry Pi HDMI - 80cm



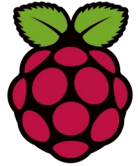
Product Code - CPRP005



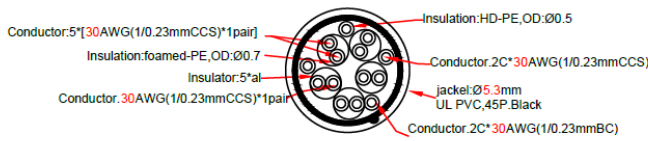
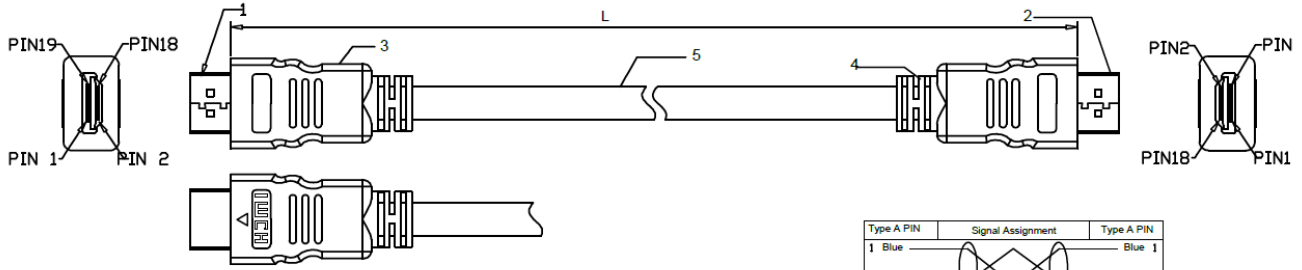
- HDMI cable 14+1pins, 30AWG, 5.3mm
- 1.4 version with Ethernet function
- Nickel plated contact to resist corrosion and for optimum connection and maximum signal transfer
- RoHS soft PVC jacket for lifetime protection
- 12CCS+2BC for ultimate conductivity
- Supports 1080P, Ethernet



Raspberry Pi HDMI - 80cm



Product Code - CPRP005



5P+4C
1.4v

FEATURES

- 1. Nickel-plated plugs
- 2. compliant ROHS. 1080P

ELECTRICAL SPECIFICATION:

- 1. Withstanding voltage: 300VDC 0.1SEC
- 2. Insulation Resistance: 5Mohm 300VDC

| Type A PIN | Signal Assignment | Type A PIN |
|------------|-------------------|------------|
| 1 Blue | | Blue 1 |
| 3 white | | white 3 |
| 4 Blue | | Blue 4 |
| 6 white | | white 6 |
| 7 Blue | | Blue 7 |
| 9 white | | white 9 |
| 10 Blue | | Blue 10 |
| 12 white | | white 12 |
| 13 Blue | | Blue 13 |
| 14 white | | white 14 |
| 15 green | | green 15 |
| 16 white | | white 16 |
| 18 red | | red 18 |
| 19 yellow | | yellow 19 |

| LENGTH(mm) |
|------------|
| 800 ±30 |

| ITEM. | DWG NO | DESCRIPTIONS&SPECIFICATIONS | QTY. | REMARK | TOLERANCE | SIGNATURES | DATE | SCALE | TITLE |
|-------|--------|--|------|--------|----------------------|--|------|-------|--------|
| 5 | | HDMI Cable 1.4V OD: 5.3mm WHITE | 1PC | | 0-10 ±0.20 | DRAFT: Claire CHECKED: Mat APPROVAL: James | | | |
| 4 | | PVC WHITE 45P | 1PC | | 10-99 ±1.00 | | | | |
| 3 | | PVC WHITE 45P | 1PC | | 100-999 ±10.0 | | | | |
| 2 | | HDMI TYPE A PLUG 19PIN (Pins, SHELL Nickel-Plated) | 1PC | | 1000-9999 ±100.00 | | | | |
| 1 | | HDMI TYPE A PLUG 19PIN (Pins, SHELL Nickel-Plated) | 1PC | | 10000-99999 ±1000.00 | | | | |
| | | | | | Unit:MM | | REV | A1 | DWG NO |