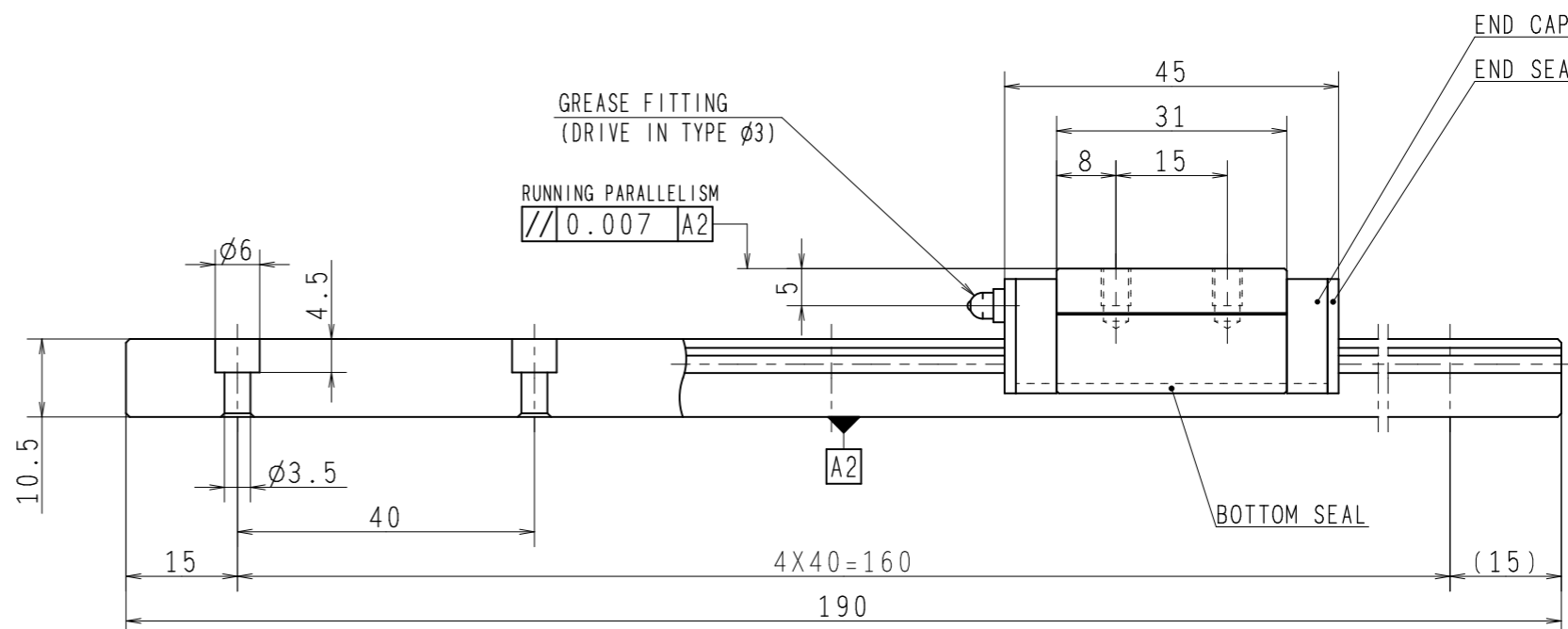
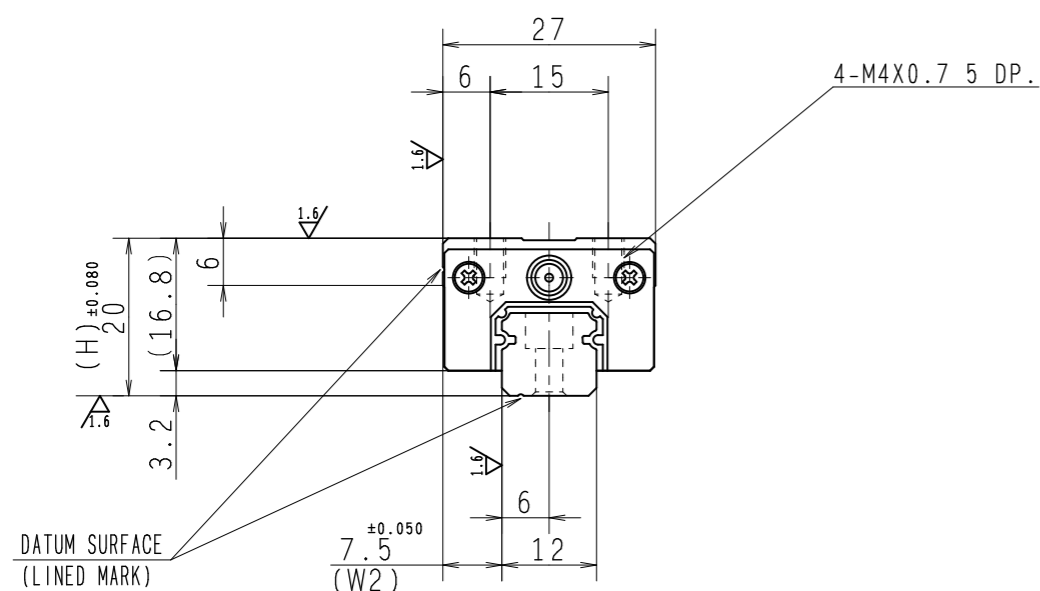
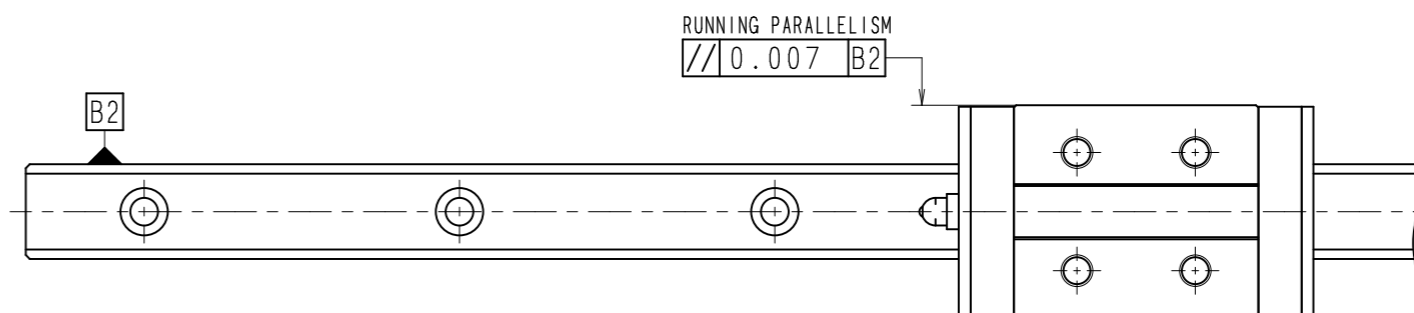
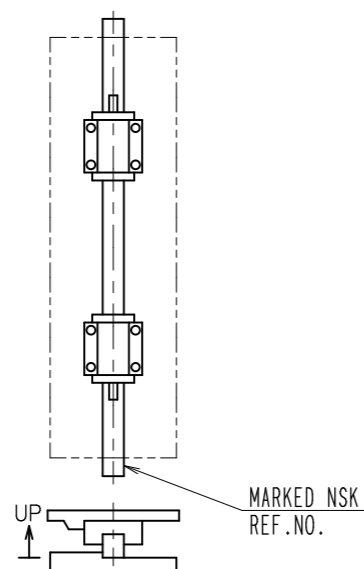


INSTALLATION DIAGRAM



ASSEMBLY ACCURACY			LINEAR GUIDE SPEC.				PROPOSAL FOR		CUSTOMER'S DWG.NO.	
VARIATION OF MOUNTING HEIGHT (A PAIR OF RAILS, ALL SLIDES) H : 20	Max.	0.015	MATERIAL		MODEL NO.	LH12AN				
VARIATION OF LATERAL WIDTH (REFERANCE RAIL ONLY) W2 : 7.5	Max.	0.020	RAIL & BALL SLIDE	MODIFY SUS440C	ACCURACY GRADE & PRELOAD	PNZ1				
DYNAMIC FRICTION FORCE DATA			END CAP	POM	BALL DIAMETER	2.3812(3/32)				
PRELOAD	22	N	END SEAL	SUS+NBR	BASIC LOAD RATING, DYNAMIC	5650 N		APPLICATION		
TOLERANCE OF FRICTION FORCE BY PRELOAD	0.05 ~ 0.54	N	RECOMMENDED TORQUE OF BOLTS(CASE OF SCM)		BASIC LOAD RATING, STATIC	11300 N		DATE		
SEAL FRICTION FORCE	Max. 1.47	N	BOLT NO.	TIGHTENING TORQUE N·m	RADIAL CLEARANCE OF BALL SLIDE	0		MAR.25.2020		
MEASURING LUBRICATION	OIL: ISO VG68		M2	0.27	HARDNESS OF BALL TRACK	HRC56~60		NSK REF.NO.		
			M2.3	0.38	NUMBER OF BALL SLIDES PER RAIL	2		LH120190ANK2B02PN1		
			M2.5	0.58	NUMBER OF BUTTING RAILS			NSK Linear Guides		
			M3	1.06	LUBRICATION	AS2				
			M4	2.5						
			M5	5.1						
			M6	8.6						
			M8	22						
			M10	43						
			M12	76						
			M14	122						
			M16	196						