

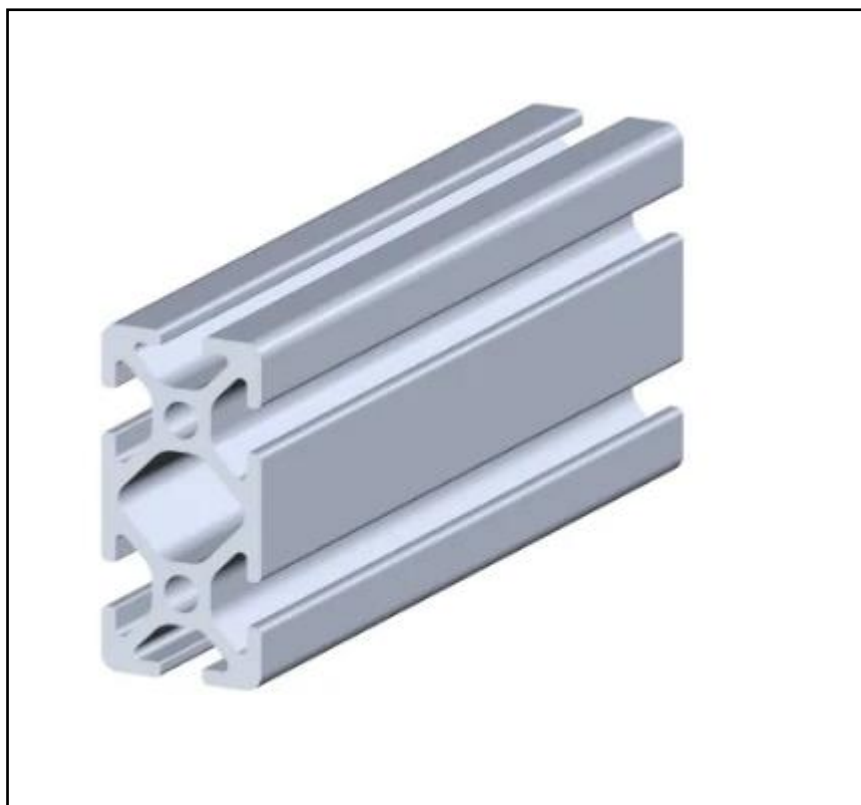
FEATURES

- Professionally approved product
- Strong, robust and extra sturdy
- Computer optimised design

Cost effective and stable solution

RS PRO Strut, 20 x 40 mm, 5mm Groove, 1000mm Length

RS Stock No.: 850-8482



RS Professionally Approved Products bring to you professional quality parts across all product categories. Our product range has been tested by engineers and provides a comparable quality to the leading brands without paying a premium price.

Product Description

Our RS Pro aluminium strut, they can sometimes be referred to as "tubing". Each individual strut is comprised of 8 x 5 mm grooves, these grooves ensure a strong and secure connection with the application it is being used in. These RS Pro struts work great in applications for general workspaces and furniture system constructions.

General Specifications

Structural Element Type	Strut Profile
Number of Grooves	6
Material	Aluminium
Applications	Construction, Industrial equipment, Automotive manufacturing, Plumbing

Mechanical Specifications

Strut Profile	20mm x 40mm
Length	1000mm
Groove Size	5mm
Mass (G)	0.89kg/m
Moment of Inertia (I_2)	$I_x = 5.12 \text{ cm}^4$, $I_y = 1.40 \text{ cm}^4$
Section Modulus (W_x)	$W_x = 2.56 \text{ cm}^3$, $I_y = 1.40 \text{ cm}^3$

