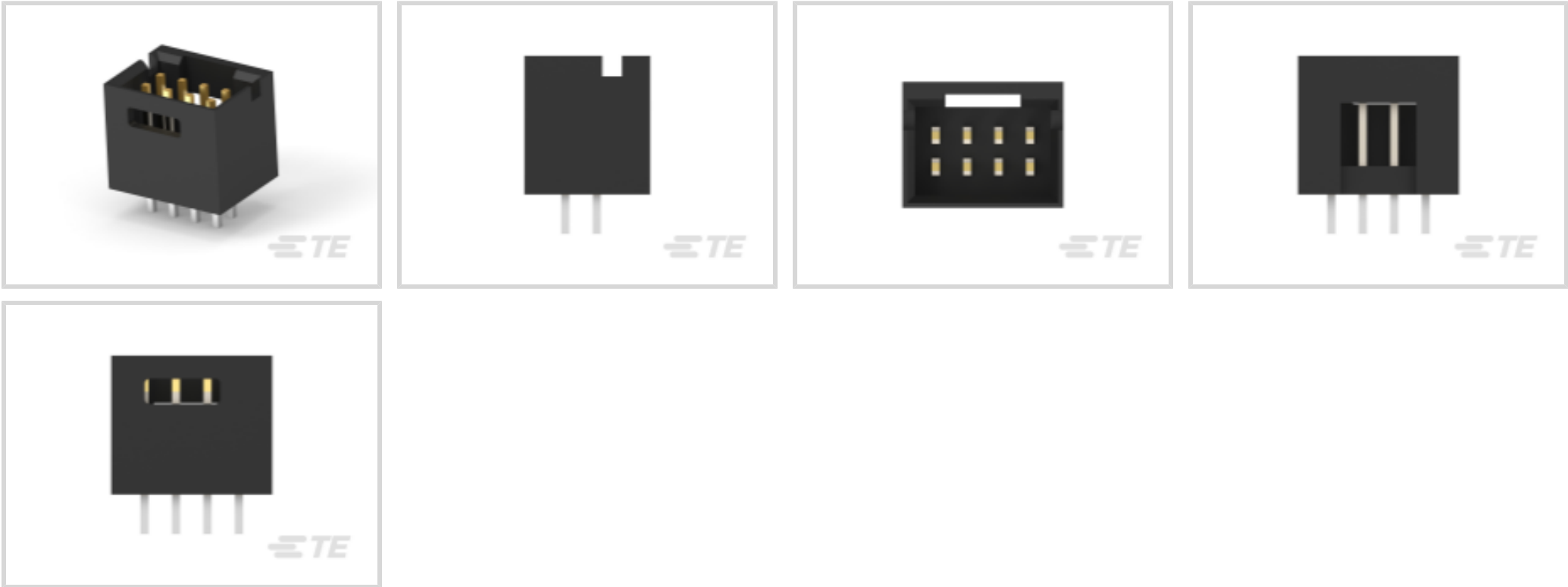




Connectors > PCB Connectors > PCB Headers & Receptacles



PCB Connector Type: **PCB Mount Header**

PCB Mount Orientation: **Vertical**

Connector System: **Board-to-Board**

Number of Positions: **8**

Number of Rows: **2**

Features

Product Type Features

PCB Connector Type	PCB Mount Header
Connector System	Board-to-Board
Header Type	Fully Shrouded
Connector & Contact Terminates To	Printed Circuit Board
Connector Product Type	Connector Assembly

Configuration Features

Connector Contact Load Condition	Fully Loaded
Board-to-Board Configuration	Parallel
PCB Mount Orientation	Vertical
Number of Positions	8
Number of Rows	2

Electrical Characteristics

Insulation Resistance	5000 MΩ
Dielectric Withstanding Voltage (Max)	750 Vrms



Body Features

Connector Profile	Standard
Primary Product Color	Black

Contact Features

Contact Underplating Material	Nickel
Contact Mating Area Plating Material Thickness	.762 μm[30 μin]
Mating Square Post Dimension	.64 mm[.025 in]
PCB Contact Termination Area Plating Material Thickness	2.54 – 5.08 μm[100 – 200 μin]
Contact Shape & Form	Square
Contact Base Material	Phosphor Bronze
PCB Contact Termination Area Plating Material	Tin-Lead
Contact Mating Area Plating Material	Gold (Au)
Contact Type	Pin
Contact Current Rating (Max)	3 A

Termination Features

Termination Post & Tail Length	3.18 mm[.125 in]
Square Termination Post & Tail Dimension	.64 mm[.025 in]
Termination Method to PCB	Through Hole - Solder

Mechanical Attachment

Mating Retention Type	Detent Window
Mating Retention	With
Mating Alignment Type	Polarization
PCB Mount Retention	Without
PCB Mount Alignment	Without
Connector Mounting Type	Board Mount
Mating Alignment	With

Housing Features

Housing Material	Thermoplastic
Centerline (Pitch)	2.54 mm[.1 in]

Dimensions

Row-to-Row Spacing	2.54 mm[.1 in]
PCB Thickness (Recommended)	1.4 mm[.055 in]



Usage Conditions

Housing Temperature Rating	Standard
Operating Temperature Range	-65 – 105 °C[-85 – 221 °F]

Operation/Application

Circuit Application	Signal
---------------------	--------

Industry Standards

Compatible With Agency/Standards Products	CSA
Compatible With Approved Standards Products	CSA LR7189, UL E28476
UL Flammability Rating	UL 94V-0

Packaging Features

Packaging Quantity	184
Packaging Method	Tray

Product Compliance

For compliance documentation, visit the product page on [TE.com](#)>

EU RoHS Directive 2011/65/EU	Not Compliant
EU ELV Directive 2000/53/EC	Not Compliant
China RoHS 2 Directive MIIT Order No 32, 2016	Restricted Materials Above Threshold
EU REACH Regulation (EC) No. 1907/2006	Current ECHA Candidate List: JAN 2025 (247) Candidate List Declared Against: JAN 2025 (247) SVHC > Threshold: Pb (40% in 3433454) Article Safe Usage Statements: Do not eat, drink or smoke when using this product. Wash thoroughly after handling. Recycle if possible and dispose of the article by following all applicable governmental regulations relevant to your geographic location.
Halogen Content	BFR/CFR/PVC Free, but Br/Cl >900 ppm in other sources.
Solder Process Capability	Wave solder capable to 240°C

Product Compliance Disclaimer

This information is provided based on reasonable inquiry of our suppliers and represents our current actual knowledge based on the information they provided. This information is subject to change. The part numbers that TE has identified as EU RoHS compliant have a maximum concentration of 0.1% by weight in homogenous materials for lead, hexavalent chromium, mercury, PBB, PBDE, DBP, BBP, DEHP, DIBP, and 0.01% for cadmium, or qualify for an exemption to these limits as defined in the Annexes of Directive 2011/65/EU (RoHS2). Finished electrical and electronic equipment products will be CE marked as required by Directive 2011/65/EU. Components may not be CE marked. Additionally, the part numbers that TE has identified as EU ELV compliant have a maximum concentration of 0.1% by weight in homogenous materials for lead, hexavalent chromium, and mercury, and 0.01% for cadmium, or qualify for an exemption to these limits as defined in the Annexes of Directive 2000/53/EC (ELV). Regarding the REACH Regulation, the information TE provides on SVHC in articles for this part number is based on the latest European Chemicals Agency (ECHA) 'Guidance on


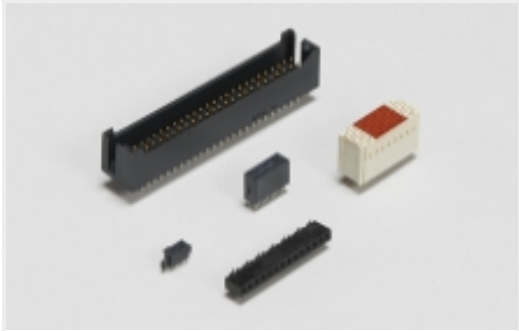

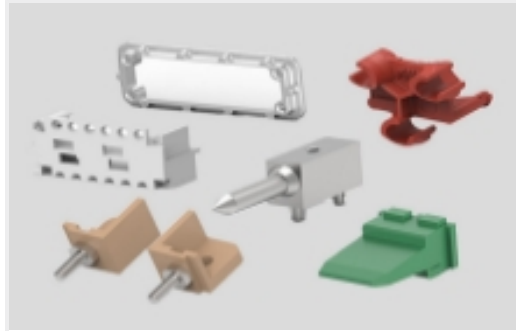
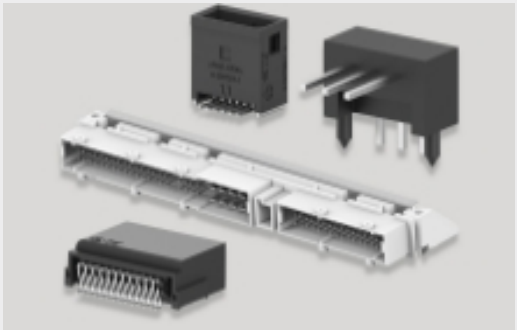


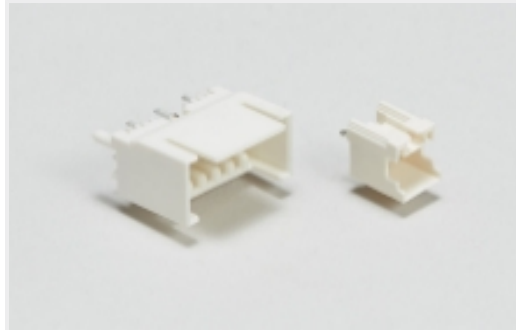


requirements for substances in articles’ posted at this URL: <https://echa.europa.eu/guidance-documents/guidance-on-reach>

Compatible Parts

 <p>TE Part # 2-87977-9 08 MODIV HSG COMP DR .100 POL</p>	 <p>TE Part # 87456-3 08 MODIV HSG COMP DR .100CL</p>	 <p>TE Part # 87456-4 08 MODIV HSG DR MRKD .100CL</p>	 <p>TE Part # 87977-2 08 MODIV HSG DR MRKD .100 POL</p>
--	--	--	--

Also in the Series | AMPMODU Headers

 <p>Automotive Headers(1)</p>	 <p>Board-to-Board Headers & Receptacles(1576)</p>	 <p>Connector Contacts(47)</p>	 <p>Connector Hardware(1)</p>
 <p>PCB Headers & Receptacles(1621)</p>	 <p>Rectangular Power Connectors(43)</p>	 <p>Wire-to-Board Connector Assemblies & Housings(5)</p>	 <p>Wire-to-Board Headers & Receptacles (114)</p>

Customers Also Bought

 <p>TE Part #1116503-2 MJ,10MM,8P,SHLD,NOPNL TABS,SN</p>	 <p>TE Part #2-1761465-2 PCI Express RA assy 5.8mm slot 2.3 mm pc</p>	 <p>TE Part #794287-1 04P CMNL HDR ASSY BLK HT</p>	 <p>TE Part #6-1614882-9 CPF 0603 110K 0.1% 25PPM 5K RL</p>
---	--	---	--



TE Part #226537-3
SUB MIN PIN MULTI MATE



TE Part #8-1768016-3
CSL-02713P-9



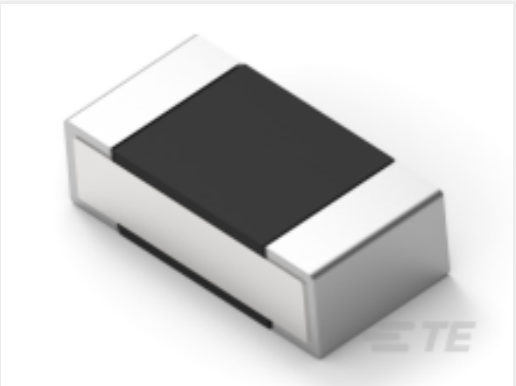
TE Part #292317-4
STD USB TYPE B, R/A, T/H



TE Part #1551920-2
zQSFP+ connector assembly



TE Part #1-66332-4
III+ PIN,24-20,TIN ,STRIP



TE Part #5-2176305-1
RP 1E 0.1W 357R 0.1% 25PPM 5K RL

Documents

Product Drawings

08 MODII HDR DRST SHRD .100CL

English

CAD Files

3D PDF

3D

Customer View Model

ENG_CVM_CVM_103168-2_M.2d_dxf.zip

English

Customer View Model

ENG_CVM_CVM_103168-2_M.3d_igs.zip

English

Customer View Model

ENG_CVM_CVM_103168-2_M.3d_stp.zip

English

By downloading the CAD file I accept and agree to the [Terms and Conditions](#) of use.