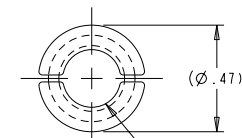
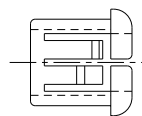
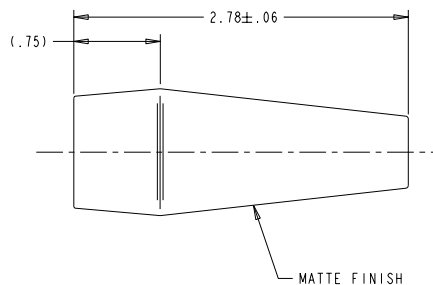
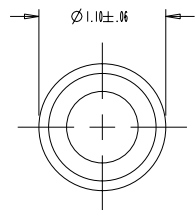


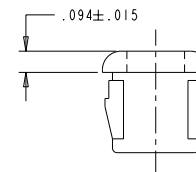
SWITCH TO BE SHIPPED UNASSEMBLED

U2-124

REV	OCN #	DATE	APR
A	964543	14 NOV 96	RG
B	011867	18 FEB 02	AED



ACCOMMODATES APPROXIMATELY .125 O.D. CABLE



SCALE: 2:1

ELECTRICAL:

RATINGS:	SEA LEVEL	50,000 FT.
LOAD	28 VDC	115 VAC
RESISTIVE	10 AMPS	10 AMPS
INDUCTIVE	5 AMPS	5 AMPS
LAMP	3 AMPS	3 AMPS
DWV	1050 VRMS	400 VRMS

ELECTRICAL LIFE: 25,000 CYCLES AT FULL LOAD

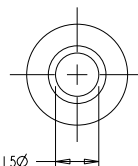
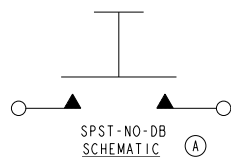
MECHANICAL:

MECHANICAL LIFE: 50,000 CYCLES
 TOTAL TRAVEL: .085 ± .015
 OPERATING FORCE: 2.5 ± .3 LBS
 RESET FORCE: .75 LB. MIN.

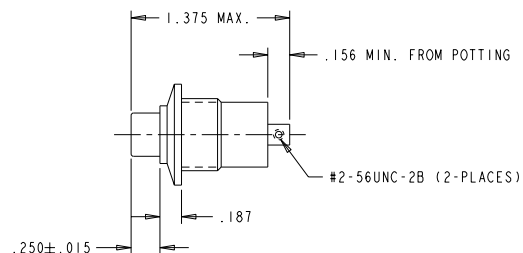
PHYSICAL:

TEMPERATURE RANGE: -55° C TO +85° C
 ENCLOSURE DESIGN: 2 (DUSTTIGHT)
 PER MIL-S-8805

BUTTON: RED NYLON
 CASE: CLEAR ANODIZED ALUMINUM ALLOY



1



CAUTION
 ANY ROTATIONAL FORCE APPLIED TO THE BUTTON IN EXCESS OF 20 IN. OZ. MAY RESULT IN INTERNAL SWITCH DAMAGE.

COMPONENTS TO BE BAGGED AND LABELED:
 OTTO
 21649
 U2-124
 DATE CODE

ITEM #	OTTO PART #	QTY.	DESCRIPTION
1	119013	1	SWITCH
2	400534-2	1	PENDANT
3	700178	1	STRAIN RELIEF

- MAJOR
- CRITICAL
- SPC CRITICAL

UNLESS OTHERWISE SPECIFIED: DIMENSIONS ARE IN INCHES. TOLERANCES: .XX ±.03, .XXX ±.010, ANGLES ±2°, DO NOT SCALE. THIRD ANGLE PROJECTION.

OTTO CONTROLS
 DIVISION OF
OTTO ENGINEERING INC.
 CARPENTERSVILLE, ILLINOIS USA

THIS DOCUMENT IS THE CONFIDENTIAL PROPERTY OF OTTO ENGINEERING, INC. IT IS PROVIDED ON A RESTRICTED BASIS AND IS NOT TO BE USED IN ANY WAY DETRIMENTAL TO THE INTERESTS OF OTTO ENGINEERING, INC.

DESCRIPTION		CONTROL HANDLE / P3 SWITCH ASSY.	
DRWN. MC	SIZE	FSCM NO	DRAWING NO.
CHKD. TB	B	21649	U2-124
APPD. ZS	DATE 14-Feb-91	WT.	N/A
			Sheet 1 OF 1