

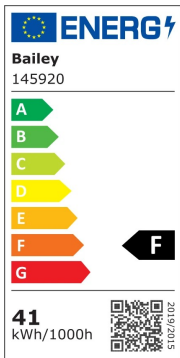


CM-T G12 35W 942 NDL

Article number: 145920

BAI CM-T G12 85V 35W 4200K 3300lm 20x100mm V±45° CRI90-100 10.000h Ceramic Metal Halide CMH-T CDM-T CMI-T HRI-T RCC-T Compact halogen metal halide lamp

The Ceramic Metal Halide (CMH/CDM) lamps from Bailey Lights continue to offer possibilities for lighting design where a LED can't be used yet. These lamps provide excellent overall light quality, excellent lumen maintenance, efficiency while maintaining long life and reliability. The lamp base is ceramic. These lamps are often used in shops, shop windows and museums.



General ETIM properties

ETIM group	Lamps
ETIM class	Halogen metal halide lamp without reflector
Name	CM-T G12 35W 942 NDL
Brand	Bailey
Productseries	HID
Producttype	CM-T G12

ETIM specifications

Socket	G12
Lamp power [W]	35
Colour temperature [K]	4200
Luminous flux [lm]	3300
Lamp voltage [V]	85 - 85
UV protection	Yes
Colour rendering index CRI	90-100
Colour of light according to EN 12464-1	Neutral white 3300-5300 K
Lamp efficacy [lm/W]	94
Lamp shape	Tube, single-ended
Material discharge tube	Ceramics
Burning position	Random
Diameter [mm]	20
Total length [mm]	100
External ignitor required	Yes
External ballast required	Yes
Closed luminaire required	Yes
Sun tanning lamp	No
Colour	Colourless
Colour of light	942
Model	Clear
Lamp designation	Other
Weighted energy consumption in 1000 hours [kWh]	41
Average nominal lifetime [h]	10000
Energy efficiency class according to EU regulation 2019/2015	F

Alternative articles

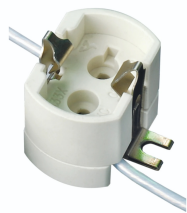


143472
TUN CMH-T G12 35W 942
15000h



60100131518
MASTERC CDM-T Elite 35W/942
G12

Complementary articles



92600036349
Lampholder G12 4A 750V
T300°C 300mm



142634
HID-AV C 35-70 /I CDM 220-
240V 50/60Hz