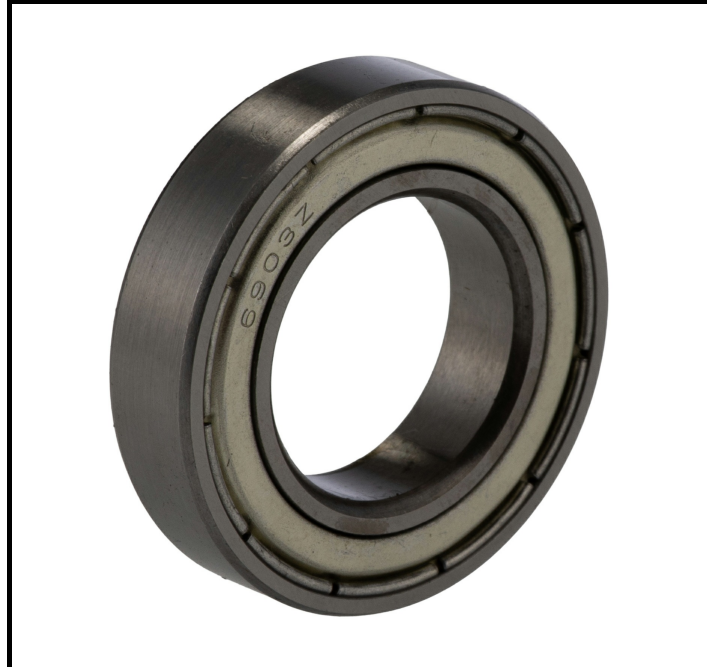


## FEATURES

- **Steel Ball Material:** Provides strength and durability for long-lasting performance
- **Single Row Deep Groove Design:** Efficiently handles both radial and axial loads
- **Parallel Bore Type:** Ensures easy installation and alignment
- **Steel Cage Material:** Offers robust support and maintains ball spacing
- **Dynamic Load Rating of 4.6 kN:** Suitable for demanding applications
- **Double Shielded End Type:** Protects against dust and debris, extending bearing life
- **Limiting Speed of 28000 rpm:** Supports high-speed operations

## RS PRO 17 mm Single Row Deep Groove Ball Bearing

RS Stock No: 291-706



RS Professionally Approved Products bring to you professional quality parts across all product categories. Our product range has been tested by engineers and provides a comparable quality to the leading brands without paying a premium price.

## Product Description

This RS PRO ball bearing is designed for high-speed and high-precision applications. It features a single row deep groove design, making it ideal for handling radial and axial loads efficiently. The double shielded construction ensures protection against contaminants, enhancing durability and performance.

## General Specifications

Ball Material	Steel
Bearing Type	Single Row Deep Groove Ball
Bore Type	Parallel
Cage Material	Steel
Dynamic Load Rating	4.6 kN
End Type	Double Shielded
Internal Clearance	CN
Limiting Speed	28000 rpm
Number of Rows	1
Product Type	Ball Bearing
Race Material	Steel
Race Type	Plain
Race Width	7 mm
Static Load Rating	2.55 kN

## Mechanical Specifications

Inside Diameter	17 mm
Outside Diameter	30 mm

## Approvals

Standards/Approvals	ANSI-ESD S20.20:2021
---------------------	----------------------

