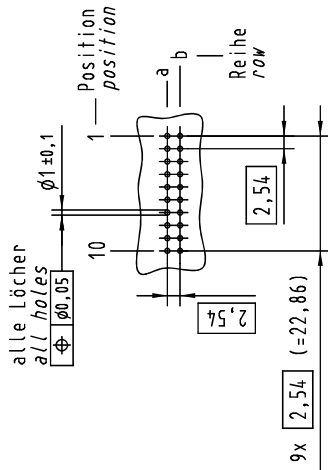


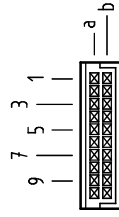
X

Lochbild
board drillings



X

Kontaktanordnung
contact arrangement

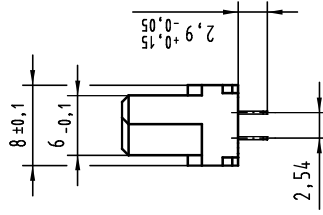


20 Einlöt Kontakte
20 solder contacts

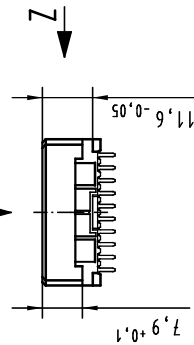
☒ = Einlöt Kontakt
= solder contact

☐ = Kontaktposition nicht belegt
= position without contact

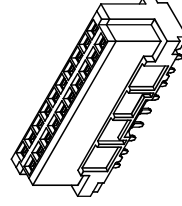
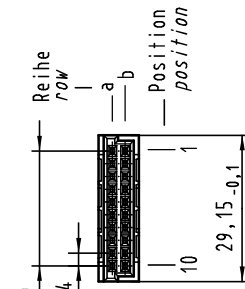
Z (2:1)



X



9 x 2,54 (=22,86)



1 weitere Informationen siehe: DS 09 03 213 02 01
further information see: DS 09 03 213 02 01

09 24 220 6414	2
Bestell-Nr. part-no.	Anforderungsstufe performance level
Nicht tolerierte Maß-/Free size tolerances IEC 60603-2	
har-bus 3B Federleiste Einlötlöt 2,9, 20-polig, SMC (Hochtemperatur) har-bus 3B female connector solder 2,9, 20-pole, SMC (high temperature)	
TB 09 24 220 X414	
Sub.	

Tech. Character.		Modul/Module	
All Dimensions in mm Original Size DIN A 3	Dat.	Name	Modul/Module
	03.02.09	MS	1:1
	03.02.09	RA	
36370	20.07.11	HL.	
35603			
Mod.	Dat.	Name	
HARTING Electronics GmbH & Co. KG D-32339 ESPELKNIP			