

Features

- Threaded Coupling
- IP68
- 2-10 Poles
- Cable to Cable Connections

RS PRO SP17 In-Line Cable Mount Connector

RS Stock No.:

0304477	0304493
0304480	0304498
0304483	0304502
0304486	0304506
0304487	0304508
0304489	0304509
0304491	0304511
0304476	0304492
0304479	0304495
0304482	0304499
0304485	0304503
	0304496
	0304500
	0304505



Image for representational purposes only

RS PRO is the own brand of RS. The RS PRO Seal of Approval is your assurance of professional quality, a guarantee that every part is rigorously tested, inspected, and audited against demanding. Making RS PRO the Smart Choice for our customers.

Product Description

The RS Pro SP17 series is a range of lightweight but robust waterproof connectors, which are sealed to IP68. Threaded coupling ensures a secure connection, even in the harshest environments. Plugs and receptacles are available with either male pins or female sockets. These products are ideal for use in outdoor applications where a secure, waterproof connection is required. Updated shell offering an improved seal, which increases reliability and durability.

General Specifications

Housing Material	PC, Nylon66, Fire Resistance: V-0
Size	SP17
Cable outer diameter range	6-10mm
Body Orientation	Straight
Colour	Black
Temperature Range	-40~ +85°C
Mounting Type	In-Line Cable Mount
Mating Cycle	500
Application	Outdoor Lighting, LED Screens, Outdoor Security Cameras, and Industrial Control Systems.

Solder Contact Options

Number of contact	2	3	4	2B	3B	4B	5	7	9	10
Male contact face view										

Crimp Contact Options

SF16, SA16, SP17, SY17 WS16, WF16, WY16	1 cable to cable only	2	3	4
Male contact face view				

Electrical Specifications

SP17 In-Line Cable Mount Connector



RS Article Number	0304477	0304480	0304483	0304486	0304487	0304489	0304491	0304476
Specification	2 Pin	3 Pin	4 Pin	4 Pin (B)	5 Pin	7 Pin	9 Pin	10 Pin
Rated Current (A)	10	10	5	15	5	5	5	5
Contact Diameter (Ø mm)	1.5	1.5	1	2	5	7	9	10
Rated Voltage (AC.V)	500	500	500	500	500	400	400	400
Test Voltage (AV.V) 1 min	1500	1500	1500	1500	1500	1200	1200	1200
Contact Resistance (m Ω)	2.5	2.5	5	2.5	5	5	5	5
Wire Size (mm ² / AWG)	≤2/14	≤2/14	≤0.75/18	≤2/14	≤0.75/18	≤0.75/18	≤0.75/18	≤0.75/18
Contact Gender	Male	Male	Male	Male	Male	Male	Male	Male
Shell Type	Receptacle	Receptacle	Receptacle	Receptacle	Receptacle	Receptacle	Receptacle	Receptacle
Termination	Solder	Solder	Solder	Solder	Solder	Solder	Solder	Solder

RS Article Number	0304493	0304498	0304502	0304506	0304508	0304509	0304511	0304492
Specification	2 Pin	3 Pin	4 Pin	4 Pin (B)	5 Pin	7 Pin	9 Pin	10 Pin
Rated Current (A)	10	10	5	15	5	5	5	5
Contact Diameter (Ø mm)	1.5	1.5	1	2	5	7	9	10
Rated Voltage (AC.V)	500	500	500	500	500	400	400	400
Test Voltage (AV.V) 1 min	1500	1500	1500	1500	1500	1200	1200	1200
Contact Resistance (m Ω)	2.5	2.5	5	2.5	5	5	5	5
Wire Size (mm ² / AWG)	≤2/14	≤2/14	≤0.75/18	≤2/14	≤0.75/18	≤0.75/18	≤0.75/18	≤0.75/18
Contact Gender	Female	Female	Female	Female	Female	Female	Female	Female
Shell Type	Receptacle	Receptacle	Receptacle	Receptacle	Receptacle	Receptacle	Receptacle	Receptacle
Termination	Solder	Solder	Solder	Solder	Solder	Solder	Solder	Solder

RS Article Number	0304479	0304482	0304485
Specification	2 Pin	3 Pin	4 Pin
Rated Current (A)	10	10	5
Contact Diameter (Ø)	1.5	1.5	1
Rated Voltage (AC.V)	500	500	400
Test Voltage (AV.V) 1	1500	1500	1200
Contact Resistance (m)	2.5	2.5	5
Contact Gender	Male	Male	Male
Shell Type	Receptacle	Receptacle	Receptacle
Termination	Crimp	Crimp	Crimp

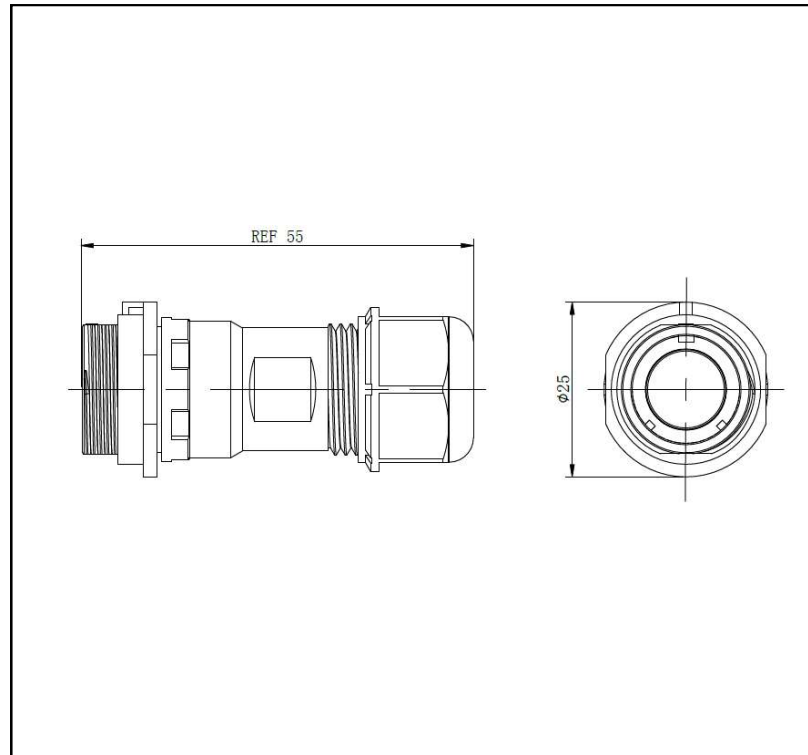
RS Article Number	0304495	0304499	0304503
Specification	2 Pin	3 Pin	4 Pin
Rated Current (A)	10	10	5
Contact Diameter (Ø)	1.5	1.5	4
Rated Voltage (AC.V)	500	500	400
Test Voltage (AV.V) 1	1500	1500	1200
Contact Resistance (m)	2.5	2.5	5
Contact Gender	Female	Female	Female
Shell Type	Receptacle	Receptacle	Receptacle
Termination	Crimp	Crimp	Crimp

RS Article Number	0304496	0304500	0304505
Specification	2 Pin	3 Pin	4 Pin
Rated Current (A)	10	10	5
Contact Diameter (Ø)	1.5	1.5	4
Rated Voltage (AC.V)	500	500	400
Test Voltage (AV.V) 1	1500	1500	1200
Contact Resistance (m)	2.5	2.5	5
Contact Gender	Female	Female	Female
Shell Type	Receptacle	Receptacle	Receptacle
Termination	Crimp (crimps not	Crimp (crimps not	Crimp (crimps not

Protection Category

IP Rating	IP68
-----------	------

Dimensional Line Drawings



Connection Diagrams / Assembly Diagrams / Illustrations / Accessories